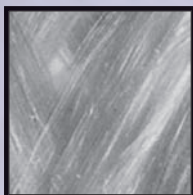


PUREFYBE® DEPTH WOUND FILTER CARTRIDGES

Standard and 4 Inch O. D.

- FREE OF "SIZING" & YARN "FINISH" SUBSTANCES
- OUR MATERIALS MEET F.D.A. REGULATIONS FOR FOOD, BEVERAGES, AND DRINKING WATER
- OUR PUREFYBE FIBER MEDIA IS NON-MIGRATING

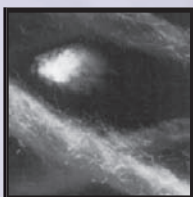


Designed specifically for filtration applications that require non-migrating filter media that is free of extractables. Wound on a polypropylene core, these cartridges have a maximum operating temperature of 200°F, are available with micron retentions of 1.0 to 200 and lengths of 4 to 40 inches. Standard cartridges have an outside diameter of 2½ inches and the 4 inch outside diameter cartridge has a contaminant holding capacity equivalent to 10 square feet of surface filter area.



GLASS FIBER FILTER CARTRIDGES

- IMPERVIOUS TO HIGHLY CORROSIVE SIVE AGENTS *
- STANDARD CORE COVER PREVENTS FIBER MIGRATION
- OPERATING TEMPERATURES TO 750°F



Glass fiber filter cartridges are available for higher temperatures and corrosion levels than any of the other fiber type filter media.

Glass fibers on a stainless steel core can operate up to 750°F. All glass fiber filter cartridges contain a woven glass fabric core cover and are available with micron retentions of 1.0 to 100. Cartridges are a full 2½ inch outside diameter and are available in lengths of 4 to 40 inches.



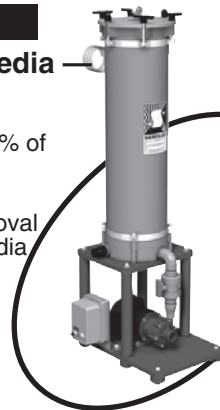
* Except hydrofluoric acid and select strong oxidizing agents.

REDUCE MEDIA COST*!

3 WAYS TO STOP

overspending for media

- Consider recirculatory filtration (Save up to 80% of media cost.)
- Install 2nd chamber for step-down particle removal (Save up to 30% of media cost.)
- Install a larger filter chamber to reduce velocity across the media (Can save 10% to 40%)



PROVE IT TO YOURSELF.

Call (800-323-5431),
FAX (847-559-1995) or
Email (sales@serfilco.com)
with your filtration questions ...

Our Sales Application
Engineers
are waiting to help!



WE GUARANTEE IT!

* Savings based on actual case histories.

ST-9

FILTER CARTRIDGES

INDUSTRIAL

COMMERCIAL

RESIDENTIAL



PHONE: 847-509-2900 OR 800-323-5431
FAX: 847-559-1995
E-MAIL: SALES@SERFILCO.COM
WWW.SERFILCO.COM



MAXI-DEPTH WOUND CARTRIDGES

CARBONEX / CARBO-WIND / ULTRA-CARB

CARBON PURIFICATION CARTRIDGES

SERFILCO OFFERS A LARGE RANGE OF FILTER MEDIA, CORE MATERIALS, SIZES AND MICRON RETENTIONS TO FILTER A WIDE VARIETY OF LIQUIDS AND GASES.

MEDIA:

GRANULAR ACTIVATED CARBON ¹	POLYPROPYLENE
ACTIVATED (POWDERED) CARBON	PUREFYBE [®] DEPTH WOUND POTABLE WATER POLYPROPYLENE ¹
BLEACHED COTTON ^{1,2}	RAYON
GLASS FIBER	NATURAL COTTON
POLYESTER (DACRON [®])	¹ Meets FDA regulations for potable water and food contact.
Hi PER [®]	² Free of "sizing" and yarn "finish" substances.
NYLON	
ACRYLIC (ORLON [®])	

MICRON RETENTIONS: 0.5 to 200

CORES: Polypropylene - 304 Stainless steel
Tinned steel - 316 Stainless steel

CORE COVERS:

Compatible with media

CORE EXTENDERS:

Polypropylene, 316 Stainless steel

LENGTHS: 4 to 40 inches

O.D.'s: 2 to 4 inches nominal

I.D.'s: 1 inch and 1.8 inch nominal

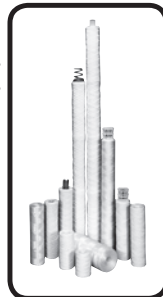


DEPTH WOUND FILTER CARTRIDGES

SERFILCO depth wound filter cartridges are "MAXI-DEPTH" to the highest specifications, forming a precise geometric pattern of decreasing size openings from the outer surface to the inner core. This effectively retains larger particles on the outer surface, and finer particles on the inner surface.

This true depth filter design operates at peak solids-holding capacity by distribution of the different particle sizes. Solids-holding capacity is increased to the equivalent of many square feet of surface media.

Metallic and non-metallic core materials, selected for maximum corrosion resistance, are offered to guarantee the physical integrity of the winding.



ULTRA-CARB POWDERED CARBON CARTRIDGES

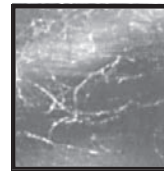
These cartridges are designed for applications where maximum carbon surface area is desirable - as in "once through" fluid purification. Available in 9", 10" and 20" lengths and with a maximum performance 2 3/4" diameter body, these cartridges are designed to fit all standard sized residential and industrial filter chambers.

High purity, pre-washed 99.5+% sulfur-free powdered carbon is bonded into a polyester media formed over a high strength polypropylene core and surrounded by an attractive, white woven poly sleeve. EPDM end caps provide excellent sealing surfaces. These high performance cartridges will operate continuously to a temperature of 140°F.



CARBON PURIFICATION CARTRIDGES

- THREE SEPARATE STAGES OF FILTRATION IN ONE CARTRIDGE
- MAXIMUM REDUCTION OF SEDIMENTS, UNDESIRABLE PARTICLES, TASTES, ODORS, AND ORGANICS
- DRINKING WATER AND GAS MODELS AVAILABLE



CARBONEX FILTER CARTRIDGE

A 2 3/4 inch nominal O. D. polyethylene outer shell, with EPDM end caps, houses a column of 99.5% sulfur-free granular activated carbon and a 3 micron polypropylene polishing filter, wound on a polypropylene core. Maximum operating temperature 140°F. Recommended flow rate 2 U.S. GPM per 10" length.



CARBO-WIND CARBON CARTRIDGE

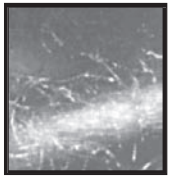
Designed for heavier sediment loads and a maximum operating temperature of 200°F, the 5/50 micron, 2 3/4 inch nominal O.D. wound polypropylene prefilter encases 99.5% sulfur-free granular activated carbon between it and the 5 micron polypropylene polishing filter, wound on a polypropylene core. Recommended flow rate 2 1/2 U.S. GPM per 10" length.

All **CARBONEX** and **CARBO-WIND** carbon cartridges are available in 9", 10", 19", 20", 29" and 30 inch nominal lengths.



POLYPROPYLENE FILTER CARTRIDGES

- EXCELLENT RESISTANCE TO A WIDE RANGE OF ORGANIC ACIDS AND ALKALIES
- EXCELLENT RESISTANCE TO MICRO ORGANISMS
- AVAILABLE IN DRINKING WATER GRADE



These pure polypropylene filter cartridges have excellent resistance to a wide range of organic acids, alkalies, animal, petroleum and vegetable oils. They also resist mildew and micro-organisms. Drinking water grade meets the F.D.A. requirements for food contact and drinking water.

A combination of high contaminant loading capacity, all-polypropylene construction and an operating temperature to 210°F make it the most popular type in use today. Available in 4 to 40 inch nominal lengths.



BLEACHED AND NATURAL COTTON FILTER CARTRIDGES

- EXCELLENT CONTAMINANT HOLDING CAPABILITY
- OUR BLEACHED COTTON MEETS F.D.A. REGULATIONS FOR FOOD, BEVERAGES AND DRINKING WATER
- EXCELLENT RESISTANCE TO ORGANIC SOLVENTS, PETROLEUM AND VEGETABLE OILS



The rough texture of cotton fiber combined with its natural properties and a 220°F maximum recommended operating temperature make it an excellent filtration media.

Bleached cotton has practically all extractables removed by the bleaching process which makes it desirable for filtering such liquids as vegetable oils, hydraulic oil, beverages, photographic solutions and also process air.

Natural cotton media is widely used for process and waste water filtration.

Both bleached and natural cotton cartridges are available in 4 to 40 inch nominal lengths.

