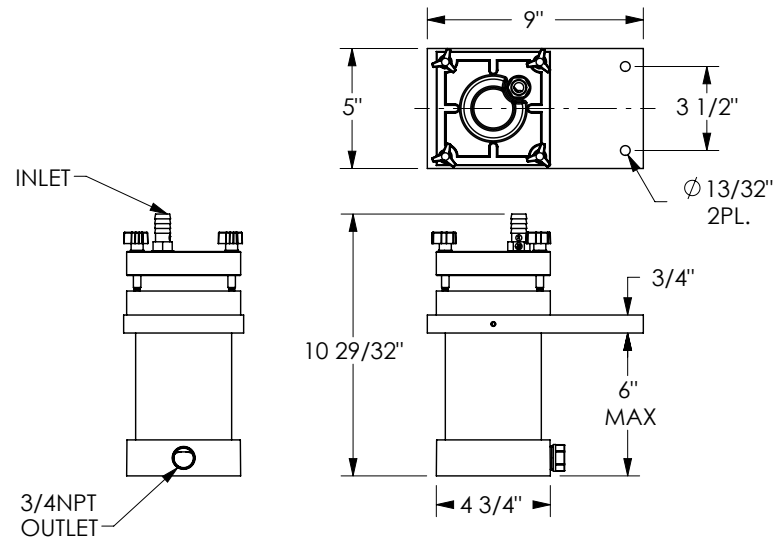


NO.	QTY	PART NO.	TITLE, DESCRIPTION	MATERIAL	SIZE
1	1	88-1233-C	ASSEMBLY, SHELL/BASE	PVC	6"x3/4NPT
2	1	22-0570	O-RING,	EPDM	2-210
3	1	33-0211-P	PLUG, THREADED	PVC	3/4 NPT
4	1	44-3200-1	MOUNTING PLATE, CHAMBER	PVC	9" X 5"
5	1	88-1099	BRACKET, COVER HOLD DOWN	CPVC	
6	1	22-0218	SPACER, TUBE	EPDM	
7	1	88-1098	COLLAR, RETAINING	CPVC	
8	1	22-0283	O-RING,	EPDM	2-341
9	1	88-1701	COVER, CHAMBER	CPVC	
10	4	11-0298	ASSEMBLY, WING NUT	PLASTIC	
11	1	22-0569	O-RING, EPDM	EPDM	2-207
12	1	33-0710	ADAPTER, STRAIGHT HOSE	CPVC	
13	1	SF-U0.5A6UC	CARTRIDGE, see Bulefin M-109		6"



PRODUCT BULLETIN:	C-150
OPERATING INSTRUCTIONS:	O-0876

Part/Assembly File Name: 78-2000		SERFILCO, LTD. 2900 MacArthur Blvd. Northbrook, IL 60062 U.S.A. WWW.SERFILCO.COM (800) 323-5431 (847) 509-2900 Fax: (847) 559-1995	
LATEST PRINT 09/02/09 DISCARD PREVIOUS COPIES			
TITLE: CHAMBER, AMALGAM 'L', 6"		USED ON:, NEXT ASSEMBLY:, CUSTOMER:, MODEL#:	
UNLESS OTHERWISE SPECIFIED DIMENSIONS ARE IN INCHES. [XX] ARE MILLIMETERS		MATERIAL: CPVC, CLEAR PVC SHELL	
TOLERANCES ARE: .XXX ±0.005 .XX ±0.015 FRACTION ±1/32 ANGLE ±1/2° (XX) REFERENCE		SIZE: A SCALE: 1:3	DWG. NO.: DRAWN: T.R. SJW APPROVED BY:
THIRD ANGLE PROJECTION		DATE: 09/01/09	PREVIOUS PART NO.: DXF: 1of1

THIS DRAWING AND THE INFORMATION DEPICTED THEREIN IS THE PROPERTY OF SERFILCO LTD. COPIES ARE ISSUED IN STRICT CONFIDENCE, AND SHALL NOT BE REPRODUCED OR COPIED OR USED AS THE BASIS FOR THE MANUFACTURE OR SALE OF PRODUCT WITHOUT PRIOR WRITTEN PERMISSION OF SERFILCO LTD.