

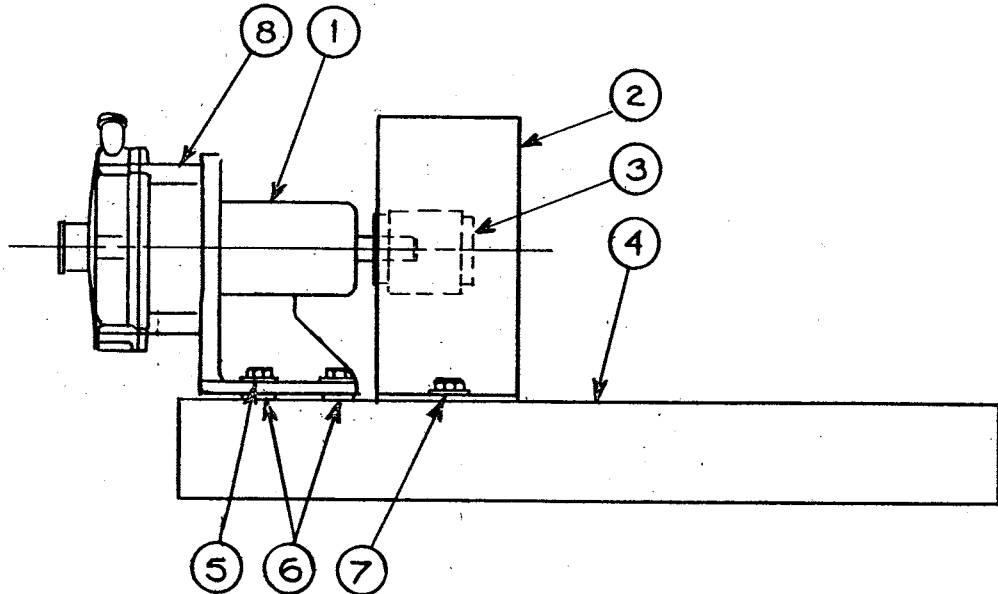


LONG-COUPLED 'N' PUMP

PARTS LIST
P-9250
JULY 1995

W/CAST IRON BEARING PEDESTAL AND 23 1/2" X 10" X 2 3/4"

MODEL	FRAME	PRICE CODE NOS.
LCK6	56	42-0216
LCK7	143T & 145T	42-0217



Refer to Bulletin P-104, Operation and Service Guide
O-1000 and Master Price List F-800.

ITEM	DESCRIPTION	PART NO.
1	Cast iron bearing pedestal assembly Includes: Pump shaft adapter - Titanium Pedestal shaft - stainless steel Pedestal bearings (2 req'd)	44-5088 44-5087 44-5082 66-1156
2	Coupling guard	77-0232F
3*	Flexible coupling assembly** 56 frame 143T, 145T, 182 or 184 frame 182T, 184T frame	99-0372 99-0373 99-0374
4	Mounting base -fiberglass reinforced polyester	77-0880
5	Hex head bolt, 3/8-16 x 2" - stainless steel (4 req'd) Hex nut, 3/8-16 - stainless steel (4 req'd) Washer, 3/8" size - stainless steel (4 req'd) Lockwasher, 3/8" size - stainless steel (4 req'd)	11-0379 11-0105 11-0126 11-0140
6*	Spacer - CPVC 56, 143T or 145T frame (4 req'd) 182, 182T, 184 or 184T frame (4 req'd)	44-3938 44-3937
7	Hex head bolt, 1/4-20 x 1 1/4" - stainless steel (2 req'd) Hex nut, 1/4-20 - stainless steel (2 req'd) Washer, 1/4" size - stainless steel (2 req'd) Lockwasher, 1/4" - stainless steel (2 req'd)	11-0136 11-0107 11-0121 11-0322
8	Series 'N' Noryl centrifugal pump	See Parts List P-9800

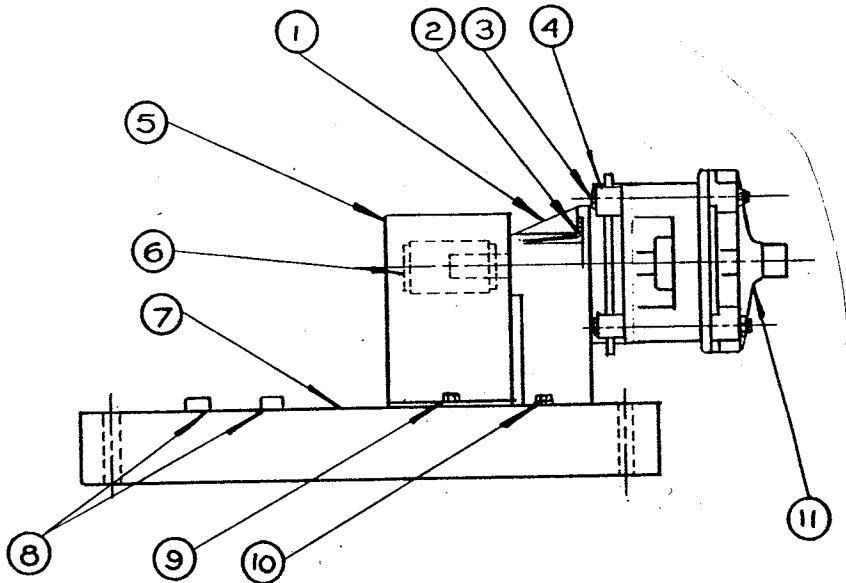
* Specify motor frame size when ordering.

** Recommended spare parts.

LONG-COUPLED 'N' PUMP

Plastic bearing pedestal and 18" x 8" x 2¼" fiberglass reinforced channel base

MODEL	FRAME	PRICE CODE NOS.
LCK6	56	42-0207A
LCK7	143T & 145T	42-0208A



ITEM	DESCRIPTION	PART NO.
1	Plastic bearing pedestal assembly Includes: Pump shaft adapter - Titanium Pedestal shaft bearing assembly	44-5089 44-5087 44-5085
2	Hex head bolt, 3/8-16 x 1" - stainless steel (4 req'd) Hex nut, 3/8-16 - stainless steel (4 req'd) Washer, 3/8" size - stainless steel (4 req'd)	11-0375 11-0105 11-0126
3	Hex head bolt, 3/8-16 x 3" - stainless steel (4 req'd) Hex nut, 3/8-16 - stainless steel (4 req'd) Washer, 3/8" size - stainless steel (4 req'd)	11-0111 11-0105 11-0126
4	"C" face adapter	44-4342
5	Coupling guard	77-0232F
6*	Flexible coupling assembly** 56 frame 143T, 145T, 182, 184 frame 182T, 184T frame	99-0372 99-0373 99-0374
7	Mounting base -fiberglass reinforced polyester	77-0900
8*	Spacer - CPVC 56, 143T, or 145T frame (4 req'd) 182, 182T 184, or 184T frame (2 req'd)	44-3945 44-3937
9	Hex head bolt, ¼-20 x 1¼" - stainless steel (2 req'd) Hex nut, ¼-20 - stainless steel (2 req'd) Washer, ¼" size - stainless steel (2 req'd) Lockwasher, ¼" size - stainless steel (2 req'd)	11-0136 11-0107 11-0121 11-0322
10	Hex head bolt, 5/16-18 x 1" - stainless steel (2 req'd) Hex nut, 5/16-18 - stainless steel (2 req'd) Washer, 5/16" size - stainless steel (2 req'd) Lockwasher, 5/16" size - stainless steel (2 req'd)	11-0362 11-0354 11-0122 11-0355
11	Series 'N' Noryl centrifugal pump	See Parts List P-9800

* Specify motor frame size when ordering.

** Recommended spare parts.

