

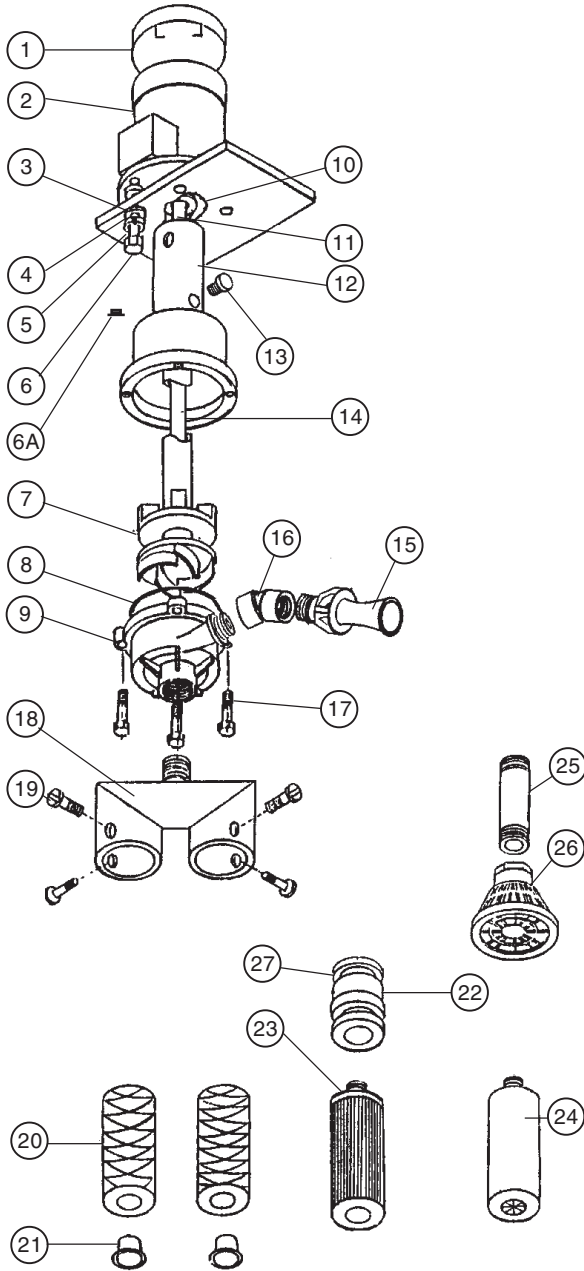


SUB-ADMIRAL

MODELS	PRICE CODE NOS.
ECS 3/4-2SC-C.3 x 2	C21EC2
ECS 3/4-3SC-C.75 x 2	C21EC3
ECS 1 1/2-4SC- D1.0 x 3	C31EC4

Refer to Bulletin F-506 and Master Price List F-800.

ECS 3/4

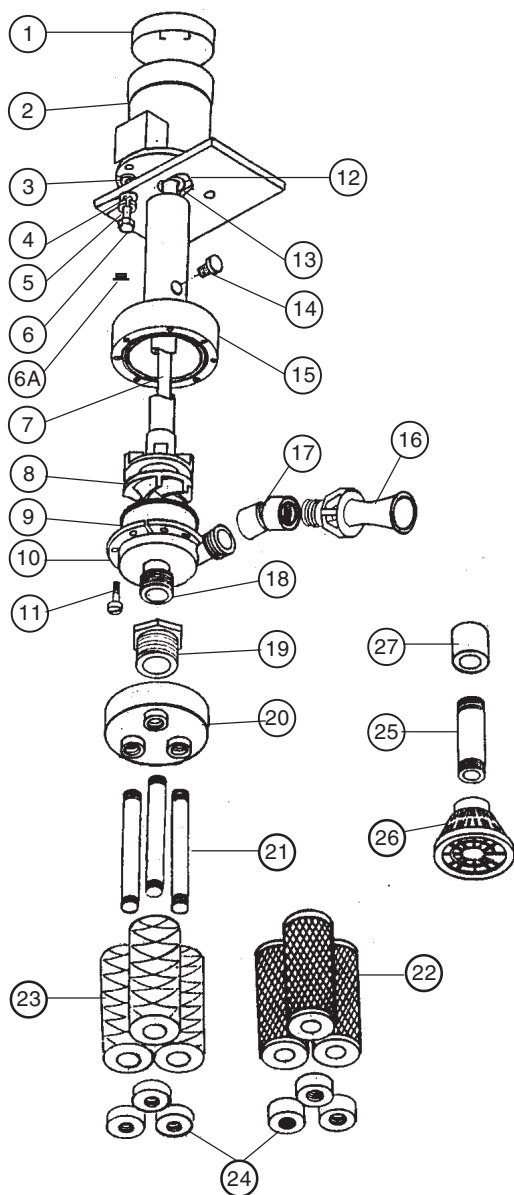


ITEM	DESCRIPTION	PART NO.	
		1/3 HP	3/4 HP
1	Drip cover (optional)	-	66-1120
2	Motor, 3450 RPM -TEFC 1/3 HP, 115/230/1/50-60 (std) 3/4 HP, 115/230/1/50-60 (std) 1/3 HP, 230/380/460/3/50-60 3/4 HP, 230/380/460/3/50-60 Explosion proof, 3450 RPM 1/2 HP, 115/230/1/50-60	66-1044 - 66-1045 -	- 66-1047 - 66-1048
3	Spacer, 3/16" thick - PVC (4 req'd)	33-0394	
4	Flat washer, 3/8" size - stn. steel (4 req'd)	11-0126	
5	Lockwasher, 3/8" size - stn. steel (4 req'd)	11-0140	
6	Hex bolt, 3/8"-16 x 1" - stn. steel (4 req'd)	11-0375	
6A	Cap - polyethylene	33-1627	
7	Impeller & sleeve assembly-CPVC 2-1/2" diameter 3-5/8" diameter	44-4309 1 -	- 44-4309
8*	'O'-ring - EPDM (standard) - Viton	22-0586 22-0585	
9	Suction casing - Black PVDF	44-4316	
10**	Slinger washer	66-1049A	-
11	Vapor seal - TFE	55-0565	55-0566
12	Support column - CPVC & PVC mounting plate ass'y	44-4324 3	44-4315 7
13	Plug, 1/2" NPT - CPVC (2 req'd)	33-0866	
14	Pump shaft, - stainless steel	44-4325	44-4305
15	Eductors, 3/4" - polypropylene	33-1733	
16	45° Elbow, 3/4" NPT -CPVC	33-0976	
17	Fillister head screw, 5/16"-18 x 1 1/2" (4 req'd) - CPVC (standard) - Stainless steel	11-0636 11-0113	
18	Twin suction adapter - CPVC	44-6121-2	
19*	Screws, 3/8"-16 x 1-1/8" - polypropylene (4 req'd)	11-2137	
20	Filter cartridge (2 req'd)	See Bulletin M-109	
21*	Filter cartridge plug - polyethylene (2 req'd)	99-0645	
22	222 'O'-ring adapter	44-7361	
23	Tri-pleated filter cartridge	See Bulletin M-207	
24	Carbon mini-canister assembly 10" 20"	99-2128 99-2128 1	
24A	End cap assembly	99-2049	
25	Suction pipe, 1" NPT x 18" long - CPVC (opt)	45-0208	
26	Suction strainer assembly - CPVC & polyethylene (optional)	99-0755	
27	"O"-ring - ethylene propylene (standard) - Viton	22-0338 11-0392	

* Recommended Spare Parts

** Not included on pumps w/ vapor seals

ECS1½



ITEM	DESCRIPTION	PART NO.
		1 HP
1	Drip cover (optional)	66-1120
2	Motor, 3450 RPM -TEFC 1½ HP 230/460/3/50-60	66-1022
3	Spacer, 3/16" thick - PVC (4 req'd)	33-0394
4	Flat washer 3/8" size - stainless steel (4 req'd)	11-0126
5	Lockwasher, 3/8" size - stainless steel (4 req'd)	11-0140
6	Hex bolt, 3/8"-16 x 1¼" - stainless steel (4 req'd)	11-0372
6A	Cap - polyethylene	33-1627
7	Pump shaft - stainless steel	44-5048 1
8	Impeller & sleeve assembly - CPVC	44-5056 1
9*	'O'-ring - EPDM (standard) - Viton	22-0362 22-0322
10	Mounting ring - CPVC	44-5043
11	Fillister head screw, 3/8"-16 x 1-1/8" long - CPVC (8 req'd)	11-0653
12**	Slinger washer- Neoprene (standard) - Viton	55-0140 55-0140 1
13	Vapor seal - TFE	55-0567
14	Plug, ½" NPT - CPVC standard (2 req'd)	33-0866
15	Support column - CPVC & PVC mounting plate ass'y	44-5054 1
16	Eductor 1½" - polypropylene	33-1734
17	1½" 45° Elbow - CPVC	33-0979
18	Suction casing - PVDF	44-4025
19	Reducing bushing 2" x 1½" NPT - CPVC	33-1132
20	Triple suction adapter - CPVC	44-6121 3
21	Rod, for DOE cart. (max. dia. 2¾") - CPVC for 10" nominal (3 req'd) for 20" nominal (3 req'd)	44-7357 44-7359
22	Carbon cartridge (3 req'd)	See Bulletin M-305
23	Filter cartridge (3 req'd)	See Bulletin M-109
24*	Cartridge end nut - CPVC (3 req'd)	44-7358
25	Suction extension 1½" NPT x 18" long - CPVC	45-0216
26	Suction strainer 1½" NPT - polyethylene	99-0743 1
27	1½" Coupling -CPVC	33-0895

*Recommended Spare Parts
** Not included on pumps w/vapor seal.

F.O.B. Northbrook, Illinois

Terms: Net 30 Days

Minimum order \$25.00



SERFILCO, LTD.

2900 MacArthur Blvd. 847-509-2900
Northbrook, IL 60062-2005 U.S.A. 800-323-5431
e-mail: sales@serfilco.com FAX: 847-559-1995
www.serfilco.com

WESTERN

13721 Alma Avenue 310-532-0801
Gardena, CA 90249-2513 FAX: 310-532-0866