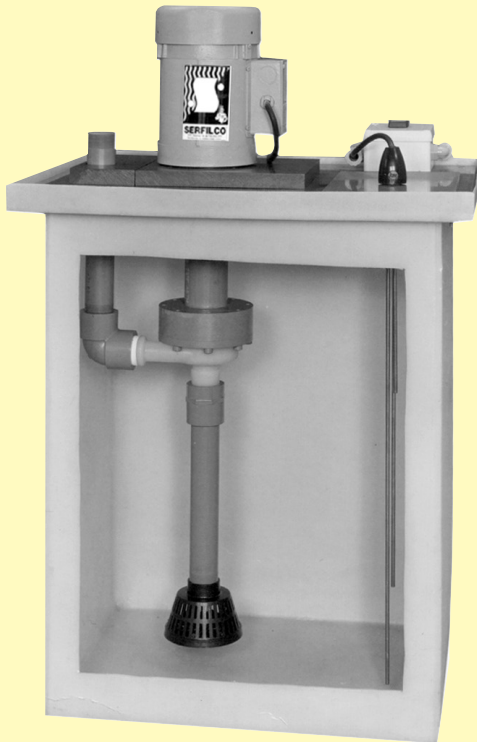


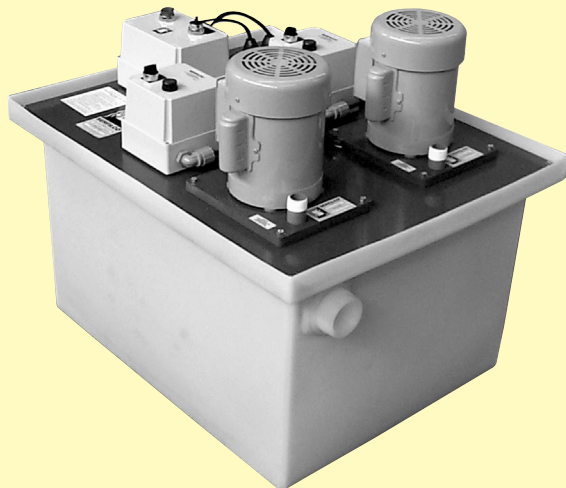


FOR COLLECTION AND TRANSFER OF:

WASTE TREATMENT ACID NEUTRALIZATION / PLATING RINSE PHOTOGRAPHIC & LABORATORY SOLUTIONS CHEMICAL STORAGE



MODEL CPS 115
with optional suction strainer



MODEL CPS 56
Alternating duplex pumps with starters

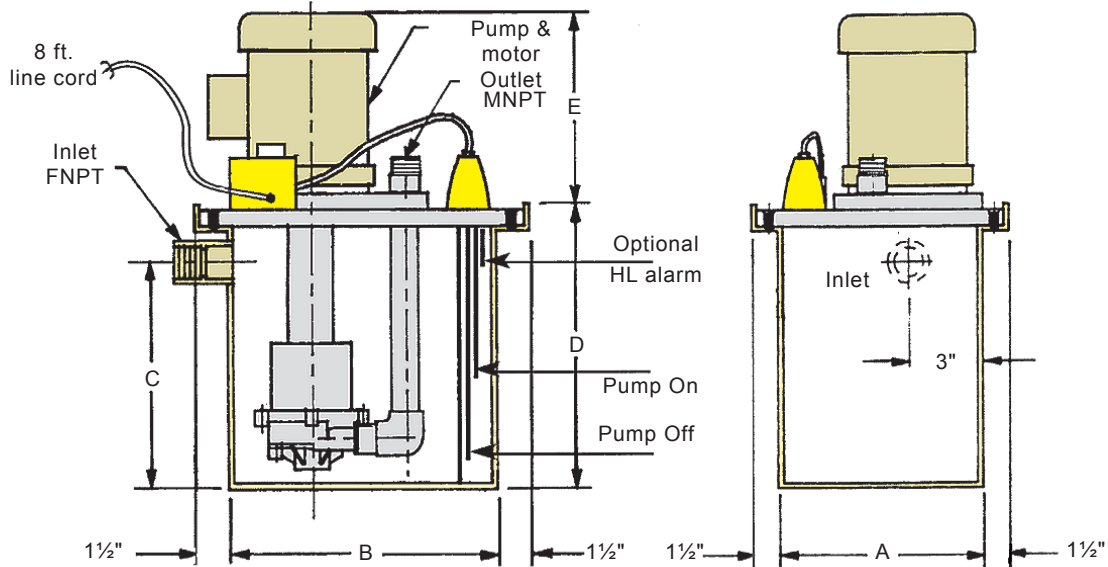
- Flows to 120 U. S. GPM or 71 ft. TDH @ 60 Hz (380 l/m or 15m @ 50 Hz)
- Corrosion resistant CPVC pump and HDPE tank for most acid/waste solutions to 140°F (60°C).
(See a chemical resistance chart)
- Automatic, self-contained units offer unattended operation
- Compact and ready-to-use simply make connections and plug in; models available to fit under counter tops
- Maintenance-free vertical pump can run dry seal-less, no bearings, cantilever shaft
- Duplex systems with high level alarm and electronic alternator
- Custom systems (Consult Sales Dept.)
 - Self-priming horizontal centrifugal pumps
 - Larger sizes available
 - Filter chamber on pump discharge
 - pH and ORP controllers for pH and redox adjustment

Collection and Pumping Stations utilize industrial duty corrosion resistant Series, 'EO' and 'EH' vertical pumps. Units are offered in a variety of capacities and all feature bearing-free pumps as standard. They offer the most economical and reliable means of collecting and transferring corrosive or hazardous wastes that need to be held for batch transfer and are not allowed to go down municipal drains. The systems are conveniently packaged to fit under most lab sinks, into photoprocessing systems or alongside production machines. Pump suction extension empties tank to within ½" of the tank bottom. When optional suction strainer is used, the minimum level is 4" above the tank bottom.

Collection and Pumping Station can also serve as a replacement sump to existing leaking or otherwise inadequate sump pit. If installed in an existing pit/tank, it would provide double containment.



DIMENSIONS & SPECIFICATIONS



MODEL	TANK SIZE			TANK INLET NPT	A		B		C		D	
	U.S. gallons	Liters	L x W x H		in.	mm	in.	mm	in.	mm	in.	mm
			Inches									
CPS7	7	27	12x12x12	1 1/2"	12.5	317	12.5	317	10	254	13.5	343
CPS11	11	42	12x12x18	1 1/2"	12.5	317	12.5	317	16	406	19.5	495
CPS14	14	53	12x18x15	1 1/2"	12.5	317	18.5	470	13	330	16.5	419
CPS18	18	68	12x18x18	1 1/2"	12.5	317	18.5	470	16	406	19.5	495
CPS25	25	95	18x18x18	1 1/2"	18.5	470	18.5	470	16	406	19.5	495
CPS30	30	114	12x24x24	2"	12.5	317	24.5	622	21.2	538	25.5	648
CPS37	37	140	18x24x18	2"	18.5	470	24.5	622	15.2	386	19.5	495
CPS44	44	166	18x24x24	2"	18.5	470	24.5	622	21.2	538	25.5	648
CPS56	56	212	24x30x18	2"	24.5	622	30.5	775	15.2	386	19.5	495
CPS75	75	284	24x24x30	2"	24.5	622	24.5	622	27.2	691	31.5	800
CPS90	90	341	24x36x24	2"	24.5	622	36.5	927	21.2	538	25.5	648
CPS115	115	435	30x30x30	2"	30.5	775	30.5	775	27.2	691	31.5	800
CPS150	150	568	24x48x30	2"	24.5	622	48.5	1232	27.2	691	31.5	800
CPS270	270	1021	36x48x36	2"	36.5	927	48.5	1232	33.2	843	37.5	952

PUMP MODEL & FLOW CURVE	MAX. FLOW		MAX. TDH		MOTOR HP	PUMP OUTLET MNPT	E	
	U.S. GPM @ 60 Hz	l/m @ 50 Hz	Ft. @ 60 Hz	m @ 50 Hz			in.	mm
EO 3/4	20	63	18	3.9	1/8	3/4"	5.9	162
EO1	37	120	34	7.2	.3	1 1/4"	9.3	236
EO3	50	150	42	8.9	.75	1 1/4"	10.4	264
EO4	74	240	52	10.9	1.0	1 1/2"	11.4	290
EO5	92	300	71	15.0	1.5	1 1/2"	11.4	290
EH2	120	380	65	14.0	2.0	1 1/2"	12.2	310



COLLECTION AND PUMPING STATIONS

2900 MacArthur Blvd. Northbrook, IL. USA 60062 www.serfilco.com (800) 323 - 5431

Pumps are constructed of CPVC, mounted on a thick PVC tank cover (1/2", 3/4" or 1", depending on model). PVC cover plate is bolted down to the tank with 304SS bolts. Pumps are independently mounted to the CPS cover via their own mounting plate. This allows for "drop in" service or replacement. Tanks are molded rigid HDPE, eliminating leakage. Tank is provided with 1 1/2" or 2" NPT inlet fitting installed near top of side. Motors are chemical duty, TEFC and are rated continuous duty at either 50 Hz or 60 Hz.

Motors for EO4 pumps and smaller (1.0 HP) are single phase and are supplied with 8 ft. line cord with molded plug. Motors for EO5 pumps and larger are three phase.

Level controls are state-of-the-art electronic conductivity type with 316SS probes or float sensors for non-conductive solutions. The level control relay is mounted in a watertight (IP54) PVC enclosure which includes on/off switch with indicating light.

TO ORDER, use Price Code Number

Select tank size, pump, configuration and level control from the tables below. Combine selections to form the Model and Price Code Numbers. See optional equipment below.

EXAMPLE: TANK + PUMP + CONFIGURATION + LEVEL CONTROL = MODEL & PRICE CODE NO.
 CPS25- + EO1 + -D + C = CPS25-EO1-DC

TANK
MODEL & PRICE CODE NO.
CPS7-
CPS11-
CPS14-
CPS18-
CPS25-
CPS30-
CPS37-
CPS44-
CPS56-
CPS75-
CPS90-
CPS115-
CPS150-
CPS270-

PUMP	
MODEL & PRICE CODE NO.	HP
EO3/4	1/8
EO1	.3
EO3	.75
EO4	1.0

MODEL & PRICE CODE NO.	HP
EO5	1.5
EH2	2.0

CONFIGURATION	
DESCRIPTION	MODEL & PRICE CODE NO.
Simplex	-S
Duplex - Non Alternating	-D
Duplex Alternating	-A

LEVEL CONTROL	
DESCRIPTION	MODEL & PRICE CODE NO.
Conductivity	C
Float sensors	F

Consult Sales Dept. for custom systems:

Special tank materials and sizes, special connections, pump selections and additional add-on equipment not listed as optional.

GENERAL PRODUCT NOTES:

1. CPS7 will use EO 3/4 pump only.
2. CPS11 will use EO 3/4, EO1, and EO3 pumps only.
3. 'EO5' and 'EH2' pumps available on sizes CPS56 and larger.
4. Duplex configurations available on sizes CPS25 and larger.
5. All 3-phase pumps and single phase pumps greater than 1.0 HP require motor starters. (See optional equipment.)



OPTIONAL

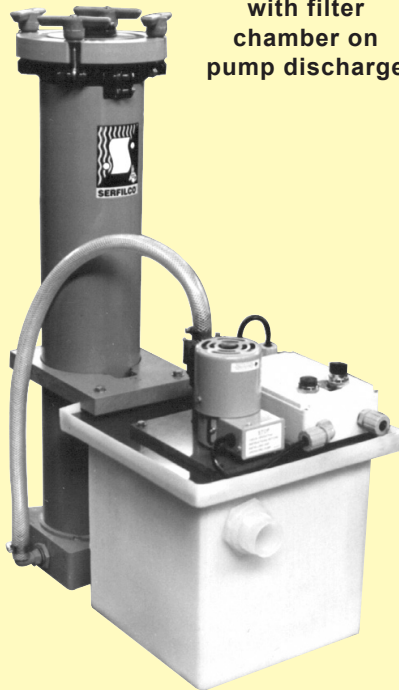
DESCRIPTION	PRICE CODE NO.
Suction strainer	
EO ¾ pump	39-1007C
EO1 & EO3 pumps	39-1002C
EO4 & EO5 pumps	39-2002C
EH2 pump	45-0162
High level alarm relay (For customer supplied sonic or visual device)	O-1378
Audible alarm (80 decibels) installed	O-1486

DESCRIPTION	PRICE CODE NO.
230 volt, single phase (in place of 115V standard)	O-HV230
Magnetic starter with H-O-A selector switch in watertight (IP54) PVC enclosure	
- single phase (specify voltage)	O-MS1S
- 3 phase (specify voltage, will change CPS to 3 phase motor)	O-MS3S
(1 starter req'd for each pump)	

Select accessories individually to complete your chemical collection, treatment or transfer system.

CUSTOMIZED COLLECTION & PUMPING STATION

with filter chamber on pump discharge



CUSTOM CHEMICAL PUMP STATION

