



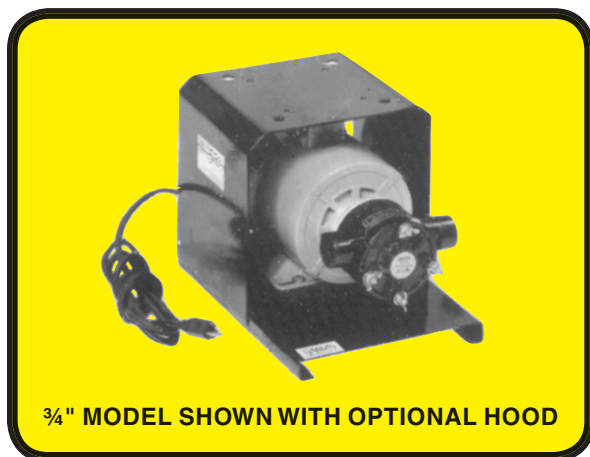
# SERFILCO®

Chemical resistant pumps & filters engineered for industry

BULLETIN  
P-617\_C  
10/09/20  
Page 1 of 2

## SERIES 'J' SELF-PRIMING FLEXIBLE IMPELLER PUMPS USED FOR QUICK TRANSFER OF:

**ACIDS / ALKALIES / SOAPS  
FERTILIZERS / INSECTICIDES  
PHOTOGRAPHIC CHEMICALS**



¾" MODEL SHOWN WITH OPTIONAL HOOD

- Self-priming to 25 ft. (7.6 M) if pre-wetted
- Flexible impeller for handling various viscosities, air laden liquids and some abrasives at lower RPM
- Can pump in either direction and be mounted in any orientation
- Epoxy pump with choice of impeller materials
- Choice of three sizes
- Flows to 20 GPM or pressures to 26 PSI
- Units include vinyl coated steel base

**⚠ CAUTION - DO NOT USE TO PUMP FLAMMABLE LIQUIDS.**

### FEATURES

**VERSATILE:** The flexible impeller pump combines the priming feature of positive displacement type pumps with the general transfer ability of centrifugals. It will pump either thin or viscous liquids — can handle more solids in suspension than other types of rotary pumps. It operates at low or high speeds — can be mounted at any angle and pumps in either direction with equal efficiency.

**SELF-PRIMING:** Pumps instantly with dry suction lifts up to 10 feet; up to 25 feet when wetted. Permits cleaner, safer installations. No foot valve required.

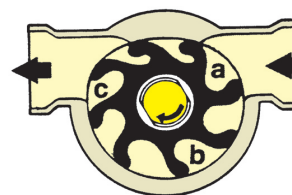
**SIMPLICITY:** One moving part — a tough, long-lived, wear-resistant flexible impeller lubricated by the liquid being pumped. No metal-to-metal pumping action — no gears to jam, clog or become noisy.

**MORE CAPACITY:** Flexible impeller pumps, in general, require less space because they deliver greater flow for weight, size and price than other types of pumps.

### FLEXIBLE IMPELLER

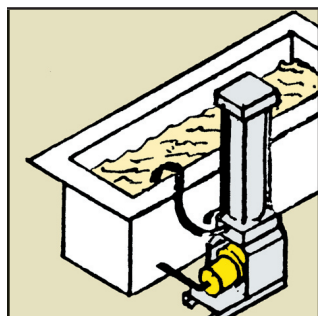
#### HOW IT WORKS:

- Flexible impeller blades, upon leaving offset cam, create a nearly perfect vacuum for instant self-priming.
- As impeller rotates, each successive blade draws in liquid and carries from intake to outlet port.
- As flexible impeller blades contact the offset cam, they bend with a squeezing action that provides continuous, uniform flow.

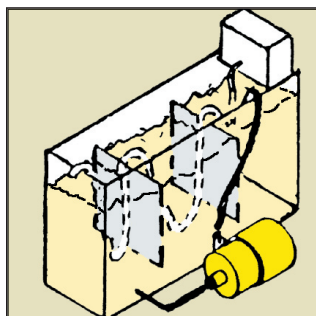


**NOTE:** Dry starts and abrasives will accelerate wear. Stock a spare impeller.

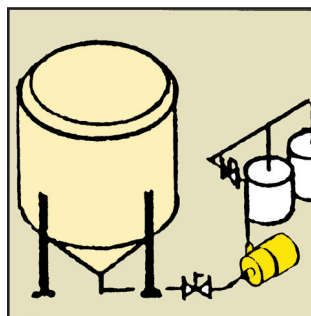
### TYPICAL APPLICATIONS



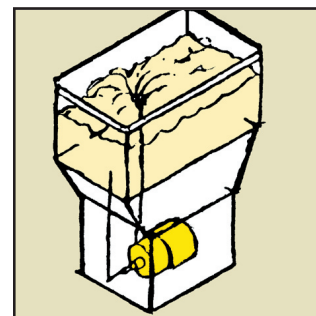
FILTRATION



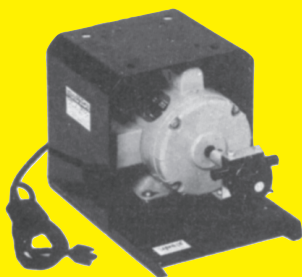
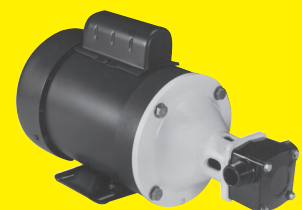
RECIRCULATION



TRANSFER



WASH DOWN

**Model 3/8 JENH****Model 1/2 JPH****Model 3/4 JENH  
Model 1 JEESNH****MODEL 3/8 JENH**

Epoxy plastic pump, self-priming with neoprene impeller, external carbon-ceramic mechanical seal and epoxy drive sleeve over stainless steel shaft. Non-metallic solution contact. Close-coupled to a 1/4 H.P., 115/1/60, 1725 RPM, TEFC motor. Complete with 8 ft. of 3-wire cord and plug. Two 10 ft. lengths of 5/8" I.D. vinyl reinforced hose, adapters and clamps. Unit mounted on a vinyl coated steel base, 9-3/8" wide x 13" long. Maximum flow rate: 350 GPH

**SPECIFICATIONS**

**PORT SIZE** 3/8" FNPT  
**IMPELLER** Neoprene

**SIZE (H x W x L)** 5" x 5" x 9 3/4"  
**WEIGHT (Approx.)** 30 lbs.

TO ORDER	MODEL	PRICE CODE NO.
Neoprene impeller	3/8 JENH	48-0073A
Viton® impeller	3/8 JEVH	48-0074A

TDH FEET	FLOW GPM
10	5.5
20	5.3
30	5.0
40	4.7
50	4.2

**MODEL 1/2 JPH**

Bakelite plastic pump, self-priming with neoprene impeller, lip type seal and 316 SS shaft. Pedestal mounted and solid long-coupled to a 1/3 H.P., 115/1/60, 1725 RPM, TEFC motor. Complete w/8 ft. of 3-wire cord and plug. Two 10 ft. lengths of 5/8" vinyl reinforced hose. Unit mounted on a vinyl coated steel base, 9-3/8" wide x 13" long.

**SPECIFICATIONS**

**PORT SIZE** 5/8" hose barb  
**IMPELLER** Neoprene

**SIZE (H x W x L)** 4 1/2" x 4 1/2" x 8"  
**WEIGHT (Approx.)** 33 lbs.

TO ORDER	MODEL	PRICE CODE NO.
Neoprene w/316 SS shaft	1/2 JPH	48-0070A
Neoprene w/titanium shaft	1/2 JPH-015	48-0071A
Neoprene w/Hastelloy® B shaft	1/2 JPH-02	48-0072A

TDH FEET	FLOW GPM
10	5.8
20	5.0
30	3.8

**MODEL 3/4 JENH**

Epoxy plastic pump, self-priming with neoprene impeller, external carbon-ceramic mechanical seal and epoxy drive sleeve over stainless steel shaft. Non-metallic solution contact. Close-coupled to a 1/2 H.P., 115/1/60, 1725 RPM, TEFC motor. Complete with 8 ft. of 3-wire cord and plug. Two 10 ft. lengths of 3/4" I.D. vinyl reinforced hose, adapters and clamps. Unit mounted on a vinyl coated steel base, 9-3/8" wide x 13" long. Maximum flow rate: 675 GPH

**SPECIFICATIONS**

**PORT SIZE** 1/2" FNPT  
**IMPELLER** Neoprene

**SIZE (H x W x L)** 9 1/4" x 9" x 17 1/4"  
**WEIGHT (Approx.)** 33 lbs.

TO ORDER	MODEL	PRICE CODE NO.
Neoprene impeller	3/4 JENH	48-0075A
Viton® impeller	3/4 JEVH	48-0076A

TDH FEET	FLOW GPM
10	11.3
20	10.2
30	9.0

**MODEL 1 JEESNH**

Epoxy plastic pump, self-priming with neoprene impeller, external carbon-ceramic mechanical seal and epoxy drive sleeve over 316 stainless steel shaft. Pedestal mounted flexible long-coupled to a 1.0 H.P., 115/1/60, 1725 RPM, TEFC motor. Complete with 8 ft. of 3-wire cord and plug. Two 10 ft. lengths of 1" I.D. vinyl reinforced hose, adapters and clamps. Unit mounted on a vinyl coated steel base, 9-3/8" wide x 19" long. Maximum flow rate: 1560 GPH

**SPECIFICATIONS**

**PORT SIZE** 1" MNPT  
**IMPELLER** Neoprene

**SIZE (H x W x L)** 9 1/4" x 9" x 16 1/2"  
**WEIGHT (Approx.)** 38 lbs.

TO ORDER	MODEL	PRICE CODE NO.
Neoprene impeller	1 JEESNH	48-0087
Viton® impeller	1 JEESVH	48-0086
Nitrile impeller	1 JEESNIH	48-0085
For 230/1/50 Motor	—	Add -5 to Price Code Number

TDH FEET	FLOW GPM
10	20
20	17
30	14

**OPTIONAL ACCESSORIES**

TO ORDER	ADD PRICE CODE NUMBER		
Portable (wheels)	44-0042	Motor starters	Consult
Hood (vinyl coated steel)	77-0338	Hose, auxiliary pipe & fittings	Application Engi-
		Float switch assembly	neering
		Filter chambers	Department

F.O.B. Northbrook, IL Specifications subject to change without notice.

Registered trademarks: Viton-DuPont; Hastelloy-Haynes, Intl.

**SERFILCO**

2900 MacArthur Blvd. 847-509-2900  
Northbrook, IL 60062-2005 U.S.A. 800-323-5431  
e-mail: sales@serfilco.com FAX: 847-559-1995  
www.serfilco.com

DISTRIBUTED BY