



SERFILCO®

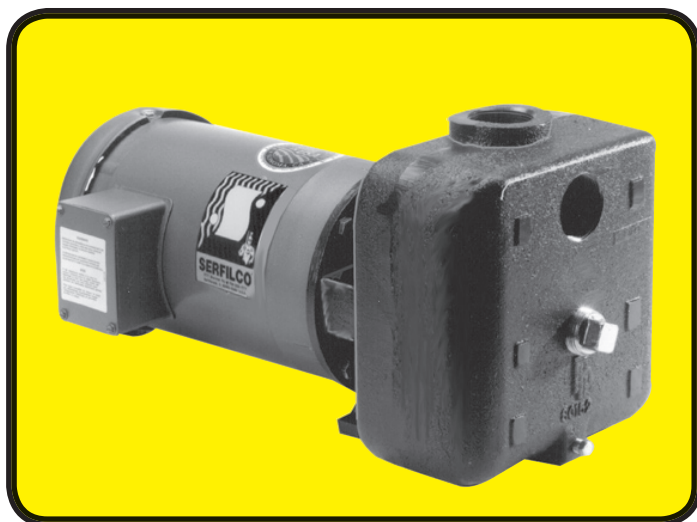
Chemical resistant pumps & filters engineered for industry

BULLETIN
P-600_C
10/12/20
Page 1 of 2

SERIES 'SP' | HORIZONTAL PUMPS

Self-priming centrifugal pumps for transfer and recirculation of:

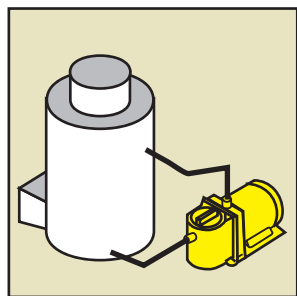
***CHEMICAL SOLUTIONS / WASTE TREATMENT
AGRICULTURAL SOLUTIONS / GROUNDWATER***



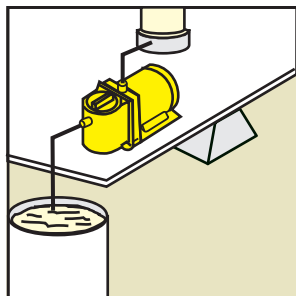
- **Flows to 142 U.S. GPM or 90 ft. TDH @ 60 Hz**
(448 LPM or 19.1m @ 50 Hz)
- **Cast iron – stainless fitted construction**
(See a chemical resistance chart)
- **316 SS impeller (semi-open design)**
- **Replaceable 316 stainless steel stub shaft**
- **Will reprime to 20 feet (6.1m)**
- **Back pull-out design**

Self-priming Series 'SP' pumps are constructed of cast iron for dependable duty in a variety of applications. The pumps include a 316 stainless steel shaft, 316 stainless steel fasteners, synthetic fiber gaskets and cast iron mounting bracket. They feature a semi-open impeller which is also constructed of 316 stainless steel. Motors are standard NEMA 56C face, 3450 RPM @ 60 Hz or 2850 RPM @ 50 Hz, TEFC.

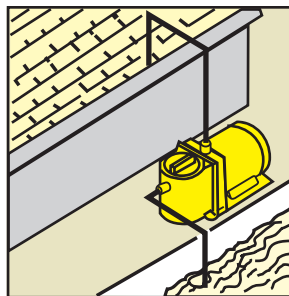
After initial prime, the Series 'SP' pump will lift up to 20 vertical feet (6.1m) and will remain primed even after shutdown. The self-priming ability, along with compact design, make Series 'SP' pumps ideal for chemical transfer, waste water treatment, emergency/backup or filter pumping.



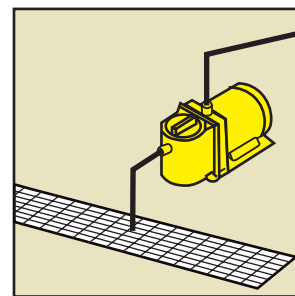
**RECIRCULATION OF
COOLING TOWERS, MIX-
ING VATS**



FILTRATION



**LIFTING FROM PONDS,
TANKS, SUMPS, PITS**



EMERGENCY STANDBY

TO ORDER, use Price Code Number

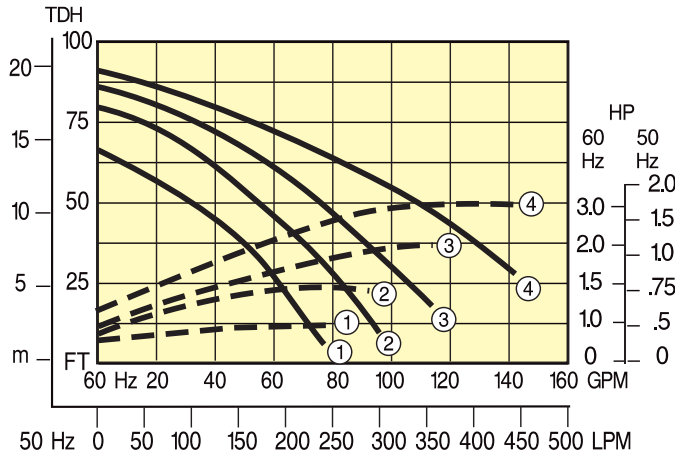


TABLE I

Select pump-motor model from flow curve number providing the desired performance. Motor horsepower is non-overloading for 1.0 specific gravity and 60 Hz operation.

SP 150 PUMP-MOTOR (230-460V/3/60) TEFC		
FLOW CURVE NUMBER	MODEL NUMBER	PRICE CODE NUMBER
1	SP-150-1L(M1)-D1.0	61-0711C
2	SP-150-2L(M1)-D1.5	61-0721D
3	SP-150-3L(M1)-D2.0	61-0731E
4	SP-150-4L(M1)-D3.0	61-0741F

TABLE II

Determine pump-motor model for a specified GPM, TDH, mechanical seal and specific gravity. Select performance point on curve and size horsepower from corresponding numbered dotted line vertically above or below performance point.

Read required horsepower at right ordinate and multiply by specific gravity. Select pump model components and Price Code Numbers from Table II.

PUMP		IMPELLER			"O"-RING & MECHANICAL SEAL			TEFC MOTOR (3450/2850)				
MODEL	CODE NO. PRICE	NUMBER ADD TO ...	FLOW CURVE MODEL NO. PRICE CODE NO.		MATERIAL (SOLUTION CONTACT)	ADD TO . . . MODEL NUMBER PRICE CODE NO.		HP	SINGLE PHASE¹		THREE PHASE¹	
SP-150	61-07								ADD TO . . .		ADD TO . . .	
									MODEL	PRICE CODE NO.	MODEL	PRICE CODE NO.
		1	1	1	EPDM, carbon, ceramic	L(M1)	1	1.0	-C1.0	A	-D1.0	C
		2	2	2	Viton®, carbon, ceramic	V(M2)	2	1.5	-C1.5	B	-D1.5	D
		3	3	3				2.0	—	—	-D2.0	E
		4	4	4				3.0	—	—	-D3.0	F

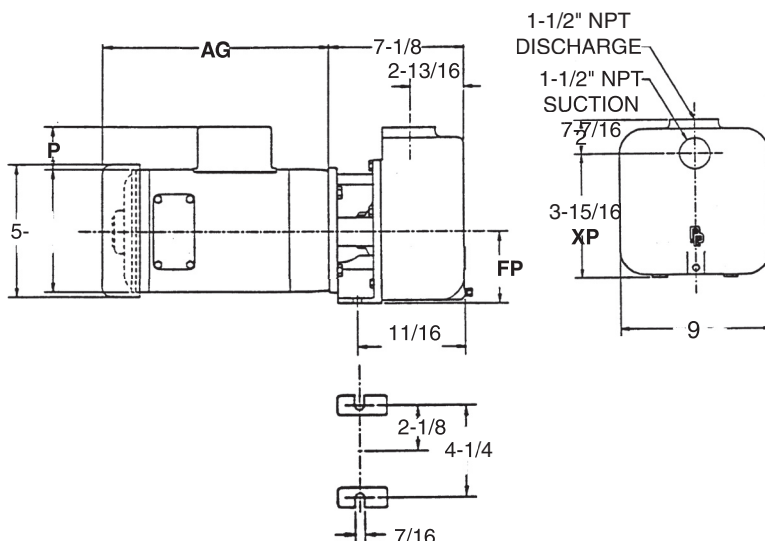
¹ Single phase - 115-208-230V/1/60 or 220-440V/1/50

¹ Single phase - 115-208-230V/1/60 or 220-440V/1/50

Three phase - 208-230-460V/3/60 or 380-415V/3/50

For 50 Hz, add -50 to Model No. and add 5 to Price Code No.

DIMENSIONS



MOTOR HP 3450 RPM 56C FRM	MOTOR END DIMENSIONS (Inches)			
		FP	XP	AG
1	9-3/4	7-3/16	6-7/8	2-1/16
1-1/2	10-1/2	7-3/16	6-7/8	2-1/16
2	11-1/8	7-3/16	6-7/8	2-1/16
3	12-3/8	7-3/16	6-7/8	2-1/16

Note: Motor dimensions will vary by model and make. Dimensions are to be used for reference only. All dimensions are rounded to the nearest sixteenth of an inch.



SERFILCO

2900 MacArthur Blvd. 847-559-1777
Northbrook, IL 60062-2005 U.S.A. 800-323-5431
e-mail: sales@serfilco.com FAX: 847-559-1995
www.serfilco.com