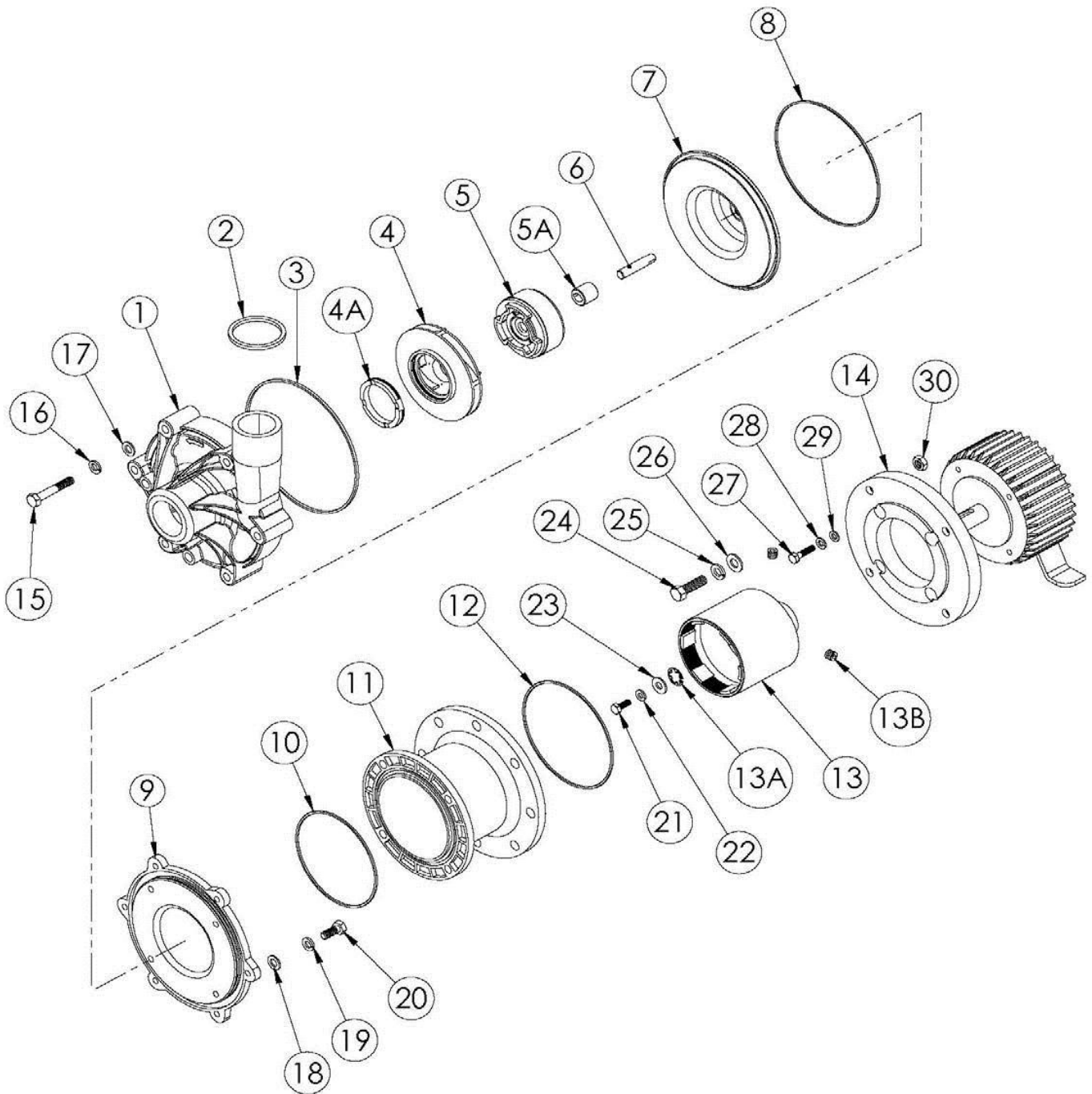




Chemical resistant pumps & filters engineered for industry

SERIES 'ME' | MAGNETIC COUPLED PUMPS

EXPLODED VIEW PARTS LIST





Series 'ME' | Magnetic Coupled Pumps

No.	Description		Qty.	ME6		ME8		ME10	
				PP	PVDF	PP	PVDF	PP	PVDF
1	Housing w/ Ring, NPT BSP Flange ANSI Flange JIS Flange Union	Ceramic SiC Ceramic SiC FRP/Ceramic FRP/SiC FRP/Ceramic FRP/SiC ST/Ceramic ST/SiC Ceramic SiC	1	67-6265	67-6265-1	67-6337	67-6337-1	67-6252	67-6252-1
				67-6346	67-6346-1	67-6381	67-6381-1	67-6345	67-6345-1
				67-6265-2	67-6265-3	67-6337-2	67-6337-3	67-6252-2	67-6252-3
				67-6346-2	67-6346-3	67-6381-2	67-6381-3	67-6345-2	67-6345-3
				67-6369	67-6369-1	67-6384	67-6384-1	67-6365	67-6365-1
				67-6370	67-6370-1	67-6385	67-6385-1	67-6366	67-6366-1
				67-6369-4	67-6369-5	67-6384-4	67-6384-5	67-6365	67-6365-1
				67-6370-4	67-6370-5	67-6385-4	67-6385-5	67-6366	67-6366-1
				67-6369-2	67-6369-3	67-6384-2	67-6384-3	67-6365-2	67-6365-3
				67-6370-2	67-6370-3	67-6385-2	67-6385-3	67-6366-2	67-6366-3
67-6377	67-6377-1	67-6382	67-6382-1	67-6367	67-6367-1				
67-6378	67-6378-1	67-6383	67-6383-1	67-6368	67-6368-1				
2	Discharge 'O'-ring (BSP housings only),	FKM EPDM Simriz Kalrez	1	22-2219-V				22-0883-V	
				22-2219				22-0883	
				22-2219-1				22-0883-1	
				22-2219-2				22-0883-2	
3	Housing 'O'-ring	FKM EPDM Simriz Kalrez	1	22-2257-V					
				22-2257					
				22-2257-1					
				22-2257-2					
4	Impeller		1	See 'ME' Impeller Assembly Table					
4A	Impeller Thrust Ring Only	PTFE SiC	1	67-6257					
				67-6257-1					
5	Impeller Drive Assy.	6-pole Carbon PTFE Ceramic SiC	1	67-6361	67-6361-3	67-6361	67-6361-3	67-6361	67-6361-3
				67-6362	67-6362-3	67-6362	67-6362-3	67-6362	67-6362-3
				67-6363	67-6363-3	67-6363	67-6363-3	67-6363	67-6363-3
				67-6364	67-6364-3	67-6364	67-6364-3	67-6364	67-6364-3
		8-pole Carbon PTFE Ceramic SiC		67-6361-1	67-6361-4	67-6361-1	67-6361-4	67-6361-1	67-6361-4
				67-6362-1	67-6362-4	67-6362-1	67-6362-4	67-6362-1	67-6362-4
				67-6363-1	67-6363-4	67-6363-1	67-6363-4	67-6363-1	67-6363-4
				67-6364-1	67-6364-4	67-6364-1	67-6364-4	67-6364-1	67-6364-4
		10-pole Carbon PTFE Ceramic SiC		67-6361-2	67-6361-5	67-6361-2	67-6361-5	67-6361-2	67-6361-5
				67-6362-2	67-6362-5	67-6362-2	67-6362-5	67-6362-2	67-6362-5
				67-6363-2	67-6363-5	67-6363-2	67-6363-5	67-6363-2	67-6363-5
				67-6364-2	67-6364-5	67-6364-2	67-6364-5	67-6364-2	67-6364-5
5A	Impeller Bushing,	Carbon PTFE Ceramic SiC	1	67-2387-J					
				67-2790-J					
				67-3617-J					
				67-3617-1J					
6	Impeller Shaft,	Ceramic SiC Hastelloy	1	67-6293					
				67-6293-1					
				67-6293-2					
7	Barrier w/ thrust washer	SiC	1	67-6235-4	67-6235-5	67-6235-4	67-6235-5	67-6235-4	67-6235-5
8	Barrier 'O'-ring	FKM EPDM Buna N	1	22-2161-V					
				22-2161					
				22-2161-B					
9	Clamp Ring, Painted Painted w/ Non-sparking ring ATEX	Cast iron Cast iron Cast iron	1	67-6246	67-6246-1	67-6246	67-6246-1	67-6246	67-6246-1
				67-6521	67-6521-1	67-6521	67-6521-1	67-6521	67-6521-1
				N/A	67-6521-1	N/A	67-6521-1	N/A	67-6521-1
	67-8599	67-8599		67-8599	67-8599	67-8599	67-8599		
	w/ Non-sparking ring ATEX	SS		67-8599-1	67-8599-1	67-8599-1	67-8599-1	67-8599-1	67-8599-1
		SS		67-8599-1	67-8599-1	67-8599-1	67-8599-1	67-8599-1	67-8599-1
SS		N/A	67-8599-1	N/A	67-8599-1	N/A	67-8599-1		
10	Clamp Ring 'O'-ring	FKM EPDM Buna N	1	44-4005					
				44-4005-A					
				44-4005-1					
11	Motor Adapter Column	Std. ATEX	1	67-6248	67-6248-1	67-6248	67-6248-1	67-6248	67-6248-1
				N/A	67-6248-2	N/A	67-6248-2	N/A	67-6248-2
12	Motor Adapter 'O'-ring	FKM EPDM Buna N	1	61-0254-V					
				61-0254					
				61-0254-B					



Series 'ME' | Magnetic Coupled Pumps

13	Drive Magnet Assy. 56C 6-pole w / Retaining Ring, 56C 8-pole 56C 10-pole 143/145TC 8-pole 143/145TC 10-pole 63 6-pole 63 8-pole 63 10-pole 71 6-pole 71 8-pole 71 10-pole 80 8-pole 80 10-pole 90 10-pole	1		67-6283 67-6283-1 67-6283-2 67-6283-4 67-6283-5 67-6289 67-6289-1 67-6289-2 67-6286 67-6286-1 67-6286-2 67-6292-1 67-6292-2 67-6292-5
13A	Retaining Ring 56C 143/145TC 63 71 80 90	1		67-5708 67-5709 67-6310 67-6309 67-5711 67-5712
13B	Set screws SS	2		67-1084-J
14	Motor Adapter 63/71 B14 Flange, 80 B14 90 B14 63 B5 71 B5 80/90 B5 ATEX 63/71 B14 ATEX 80 B14 ATEX 90 B14 ATEX 63 B5 ATEX 71 B5 ATEX 80/90 B5	1	67-6271 67-6271-1 67-6271 67-6271-1 67-6271 67-6271-1 67-5724-1 67-5724-2 67-5724-1 67-5724-2 67-5724-1 67-5724-2 67-5725-1 67-5725-2 67-5725-1 67-5725-2 67-5725-1 67-5725-2 67-6272 67-6272-1 67-6272 67-6272-1 67-6272 67-6272-1 67-6273 67-6273-1 67-6273 67-6273-1 67-6273 67-6273-1 67-6274 67-6274-1 67-6274 67-6274-1 67-6274 67-6274-1 N/A 67-6271-2 N/A 67-6271-2 N/A 67-6271-2 N/A 67-5724-3 N/A 67-5724-3 N/A 67-5724-3 N/A 67-5725-3 N/A 67-5725-3 N/A 67-5725-3 N/A 67-6272-2 N/A 67-6272-2 N/A 67-6272-2 N/A 67-6273-2 N/A 67-6273-2 N/A 67-6273-2 N/A 67-6274-2 N/A 67-6274-2 N/A 67-6274-2	67-6271 67-6271-1 67-6271 67-6271-1 67-6271 67-6271-1 67-5724-1 67-5724-2 67-5724-1 67-5724-2 67-5724-1 67-5724-2 67-5725-1 67-5725-2 67-5725-1 67-5725-2 67-5725-1 67-5725-2 67-6272 67-6272-1 67-6272 67-6272-1 67-6272 67-6272-1 67-6273 67-6273-1 67-6273 67-6273-1 67-6273 67-6273-1 67-6274 67-6274-1 67-6274 67-6274-1 67-6274 67-6274-1 N/A 67-6271-2 N/A 67-6271-2 N/A 67-6271-2 N/A 67-5724-3 N/A 67-5724-3 N/A 67-5724-3 N/A 67-5725-3 N/A 67-5725-3 N/A 67-5725-3 N/A 67-6272-2 N/A 67-6272-2 N/A 67-6272-2 N/A 67-6273-2 N/A 67-6273-2 N/A 67-6273-2 N/A 67-6274-2 N/A 67-6274-2 N/A 67-6274-2

No.	Description	Qty.	SS	Ti
15	Housing Hex HD bolt M8-1.25x50mm	6	67-2789-J	67-6308
16	Housing lock washer 5/16	6	11-0355	11-0355-T
17	Housing flat washer 1/4 wide	6	67-5767	67-5768
18	Clamp ring flat washer 1/4 wide	4	67-5767	67-5768
19	Clamp ring lock washer 5/16	4	11-0355	11-0355-T
20	Clamp ring Hex Hd bolt M8-1.25x20mm	4	11-0905	11-0905-T
21	Drive Hex HD bolt (IEC only), 63 frame M4.7x10mm 71 frame M5.8x12mm 80 frame M6-1x16mm 90 frame M8-1.25x20mm	1	67-6314 67-6312 11-0904 11-0905	67-6315 67-6313 11-0904-T 11-0905-T
22	Drive lock washer (IEC only), 63 frame M4 71 frame M5 80 frame 1/4 90 frame 5/16	1	67-6322 67-6320 11-0322 11-0355	67-6323 67-6321 11-0322-T 11-0355-T
23	Drive flat washer (IEC Only), 63 frame .172x.406x.049 71 frame .234x.531x.049 80 frame 1/4 wide 90 frame 7/16 narrow	1	67-6318 67-6316 67-5767 11-0916	67-6319 67-6317 67-5768 11-0916-T
24	Motor adapter Hex HD bolt, 3/8-16x1	4	11-0375	67-6311
25	Motor adapter lock washer 3/8	4	11-0140	11-2068
26	Motor adapter flat washer 3/8 SAE	4	67-0128-J	67-4207-J
27	Motor adapter flange Hex Hd bolt, 63 frame M5-.8x20mm (IEC frames w/ B14 flg. only) 71 frame M6-1x16mm 80 frame M6-1x16mm 90 frame M8-1.25x20mm	4	67-6348 11-0904 11-0904 11-0905	67-6349 11-0904-T 11-0904-T 11-0905-T
28	Motor adapter lock washer, 63 frame #10 (IEC frames w/ B14 flg. only) 71 frame 1/4 80 frame 1/4 90 frame 5/16	4	67-3637-J 11-0322 11-0322 11-0355	67-6350 11-0322-T 11-0322-T 11-0355-T



Series 'ME' | Magnetic Coupled Pumps

29	Motor adapter flat washer, (IEC frames w/ B14 fig. only)	63 frame	#10	4	11-0670 67-0113-J 67-0113-J 67-1293-J	67-6351
		71 frame	1/4 SAE			67-4204-J
		80 frame	1/4 SAE			67-4204-J
		90 frame	5/16 SAE			67-3845-J
30	Motor adapter nut, (IEC only)	63 & 71 frame w/ B14 flange		4	67-8141	n/a

'ME' Impeller Assemblies

MODEL	SIZE	Thrust ring			
		PTFE		SiC	
		Impeller Material			
		PP	PVDF	PP	PVDF
ME6	3.88"	67-6536	67-6536-1	67-6537	67-6537-1
	3.38"	67-6536-4	67-6536-5	67-6537-4	67-6537-5
	3.75"	67-6358-4	67-6358-5	67-6359-4	67-6359-5
ME8	3.63"	67-6379-8	67-6379-9	67-6380-8	67-6380-9
	4.18"	67-6379	67-6379-1	67-6380	67-6380-1
	3.75"	67-6379-4	67-6379-5	67-6380-4	67-6380-5
ME10	3.50"	67-6352-6	67-6352-7	67-6353-6	67-6353-7
	4.18"	67-6352	67-6352-1	67-6353	67-6353-1
	3.75"	67-6352-4	67-6352-5	67-6353-4	67-6353-5

Product Bulletin:	P-521
Operation and Service Guide:	O-4065