



CYCLE-CLEAN[®] FILTER CHAMBERS

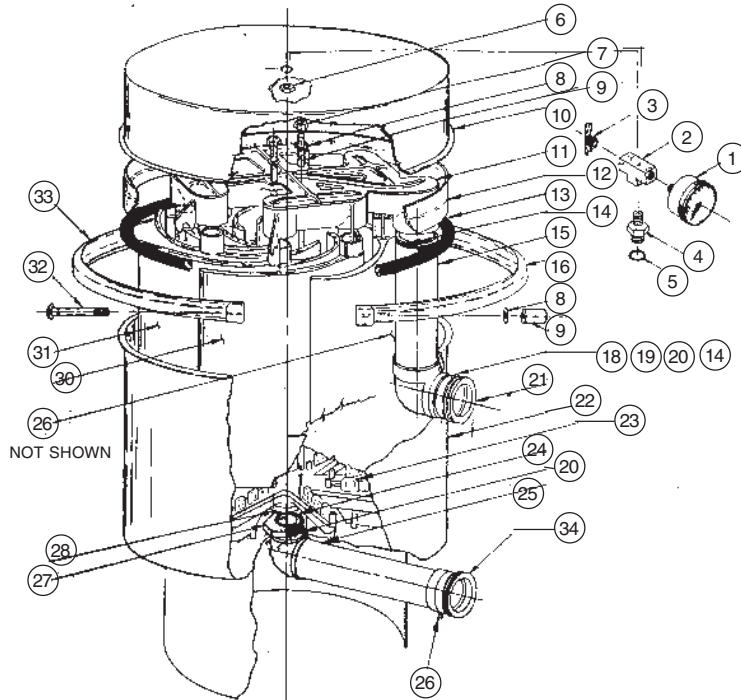
PARTS LIST
P-5050
AUG. 1990

FOR MODEL	PRICE CODE NO.
CYCL36	49-0411
CYCL72	49-0412

See page 2 for Bag Filter Chamber.

Order parts by item no. and description.

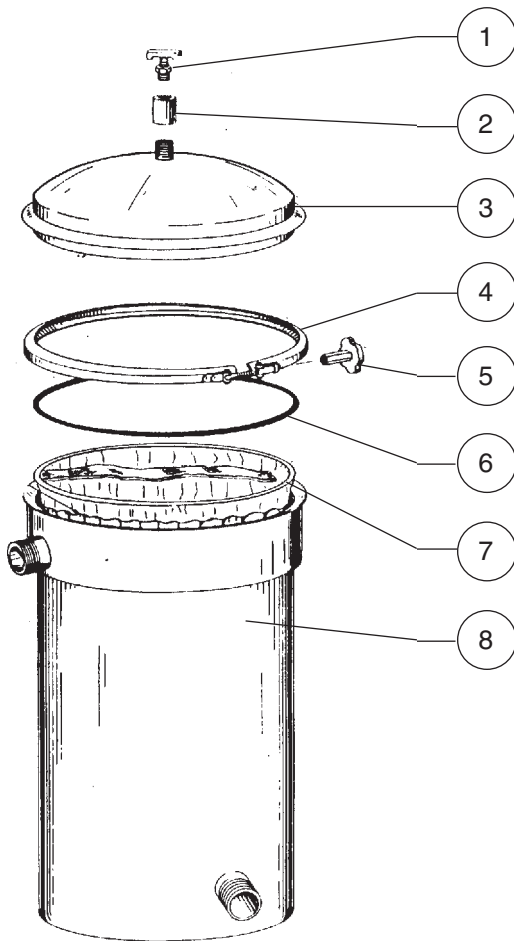
Refer to Operation and Service Guide O-1425.



ITEM	DESCRIPTION	REQ'D.
1	Pressure gauge	1
2	Tee, brass	1
3	Bleeder valve	1
4	Tee adapter	1
5	"O"-ring (gauge)	1
6	Nut, jam, 3/8-16 NC	2
7	Nut, stainless steel, 5/16-18	4
8	Washer, flat, S.S., 5/16, (part of 31/33)	2
9	Stud tie, 5/16-18 x 21½" (CYCL36) x 39½" (CYCL72)	2 2
10	Top shell, complete, 12" x 18" dia. (CYCL36) 18" x 18" dia. (CYCL72)	1 1
11	Manifold assembly, upper (part of 31)	1
12	Retainer, 18" diameter	1
13	"O"-ring, 18" diameter (for chamber)	1
14	"O"-ring, general purpose (for pipe conns.)	2
15	Upper piping assembly (specify model)	1
16	Band half assembly (part of 33)	2
17	Nut, hex, 5/16-18 NC-BR (part of 33)	2
18	External side spacer, PTMT	1
19	"O"-ring	1
20	"O"-ring, 2" bulkhead	1
21	Side bulkhead	1
22	Bottom shell & foot assy. (specify model)	1
23	Header, lower (part of 31)	1
24	Spacer	1
25	Lower piping assembly	1
26	Pipe plug, ¼" NPT	1
27	Bottom bulkhead nut	1
28	Deflector plate (part of 31)	1
29	Partial grid assembly, (part of 31) 18" (CYCL36) 36" (CYCL72)	1 1
30	Grid assembly, (part of 31) 18" (CYCL36) 36" (CYCL72)	1 1
31	Complete grid assembly 36 sq. ft. (CYCL36) 72 sq. ft. (CYCL72)	1 1
32	Bolt, carriage, 5/16 NC x 4" (part of 33)	2
33	Band assembly, 18" (parts 8, 14 & 32)	1
34	Bulkhead, 2" bonded	1

CYCLE-CLEAN® BAG FILTER CHAMBER

Order parts by item no. and description.



ITEM	DESCRIPTION
1	Air relief valve
2	Coupling, 1/4" NPT
3	Cover
4	Clamp assembly with nut
5	Clamp nut
6	"O"-ring
7	Separator bag (PCN 33-5954)
8	Vessel

