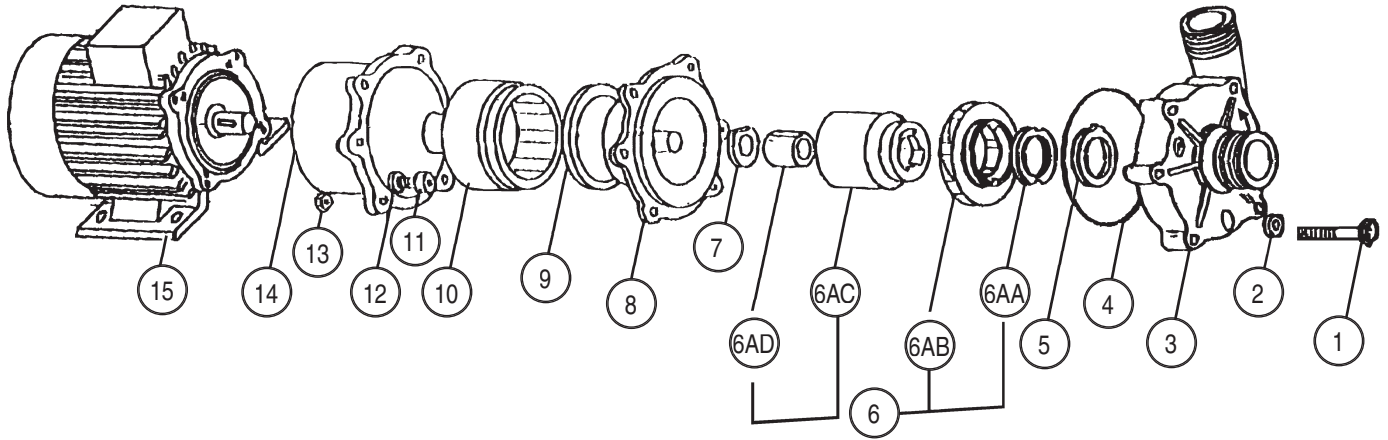




# SERIES 'P' MAGNETIC COUPLED PUMPS

(with limited dry-run capability)



ITEM	DESCRIPTION	MODEL NUMBERS	
		P1½ x 1½-MPCK	
		- 5A	- 6A
1	Bolt M8 x 60mm (6 req'd)	01-1176	
2	Washer (6 req'd)	01-1179	
3 <sup>1</sup>	Pump casing - polypropylene	01-4405-05A	
4 <sup>2</sup>	"O"-ring - EPDM	01-4405-09	
5 <sup>1</sup>	Front thrust housing - polypropylene c/w ceramic thrust ring	01-4405-10A	
6 <sup>1</sup>	Impeller complete - polypropylene	01-4405A-11A	01-4406A-11A
6AA	Impeller thrust ring - PTFE / graphite	01-4405-11AA	
6AB <sup>1</sup>	Impeller only - polypropylene	01-4405-11AB	01-4406-11AB
6AC <sup>1</sup>	Magnet only - PP	01-4405-11AC	01-4406-11AC
6AD	Impeller bushing - PTFE / graphite	01-4405-11AD	
7	Rear thrust washer - ceramic	01-4405-13A	
8 <sup>1</sup>	Liner - PP c/w ceramic spindle	01-4405-14A	01-4406-14A
9 <sup>1</sup>	Locating ring - polypropylene	-	01-4406-15A
10	Drive magnet	01-4405-16A	01-4406-16A
11	Slot head screw (bracket/motor) (4 req'd)	M6 x 20mm 01-1190	M8 x 20mm 01-1192
12	Shake proof washer (4 req'd)	M6 01-1168	M8 01-1180
13	Nut (6 req'd)	01-1181	
14 <sup>1</sup>	Motor bracket - polypropylene	01-4405-17A	01-4406-17A
15	Motor 220-240/1/50 380-480/3/50-60	1½ HP (1.1 Kw) 01-6042 01-6000	2 HP (1.5 Kw) 01-6043 01-6006
16	Pump only	01-4405A	01-4406A
17	Inlet/outlet "O"-ring - EPDM (2 req'd) not shown	01-4405 18	

Notes: <sup>1</sup> To change material from PP to PVDF - Add suffix K to Part Number. eg. 01-4405-11AK.  
<sup>2</sup> To change material from EPDM to Viton - Add suffix V to Part Number. eg. 01-4405-09V

Prices: EX Works Manchester

Terms: Nett 30 Days

Minimum Order £50.00



## SERFILCO® EUROPE

Broad oak Industrial Park Phone: +44 (0) 161 872 1317  
Ashburton Road West, Trafford Park Fax: +44 (0) 161 873 8027  
Manchester M17 1 RW England Email: sales@serfilco-europe.com  
www.serfilco-europe.com

DISTRIBUTED BY: