

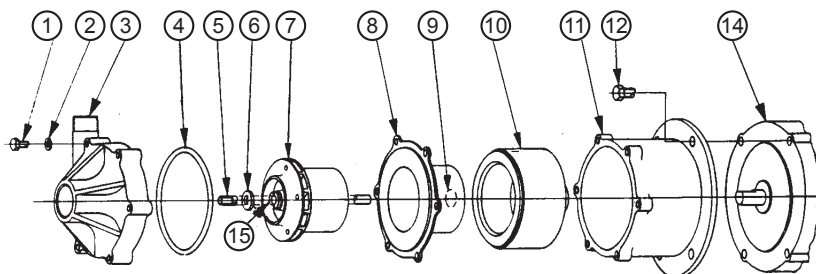


# SERIES 'D' MAGNETIC-COUPLED PUMP & MOTOR

PARTS LIST  
P-4100\_T  
NOV 2011

MODELS: 1 X 3/4 MRGR  
1 X 3/4 MKGC

Refer to Bulletin P-504,  
Operation and Service Guide O-190.



## IMPELLER DIAMETER vs SPECIFIC GRAVITY

Diameter of the impellers supplied on all Series 'D' pumps are designed for use on water-like liquids. Liquid which has a higher specific gravity can be pumped if:

- #1. The outlet flow is restricted so the impeller magnet stays in synchronization with the drive magnet, or
- #2. The restriction from a filter or other head loss is sufficient to keep the impeller magnet in synchronization, or
- #3. The overall diameter of the impeller is reduced according to the following table.

### SPECIFIC GRAVITY

	1.0 to 1.1	1.1 to 1.3	1.3 to 1.5	1.5 to 1.7	1.7 to 1.9	1.9 to 2.0
<b>IMPELLER DIAMETER (inches)</b>						
60 Hz	Std 3-1/2	3-1/4	3-1/8	3.0	2-7/8	2-3/4
50 Hz	88.9 mm (3-1/2 in) std.				82.5 mm (3-1/4)	

Add Price Code No. 48-0200 for trimming impeller diameter. Specify impeller part number and diameter.

### BOX "A"

#### FOR FILTRATION SYSTEMS WITHOUT FLOW CONTROL VALVE

3-1/4" diameter impeller is standard  
Add . . . . . Part No. 48-0200

- <sup>1</sup> Recommended Spare Parts. Include Model No. when ordering parts.
- <sup>2</sup> For pumps built after 4/92 which have a molded-in Item 9, check impeller for free fit/running over thrust washer boss.  
The inside diameter of the counter bore in the rear of the impeller should be .750 in (19mm).
- <sup>3</sup> Not required for parts manufactured after 4/92.
- <sup>4</sup> Replacement Ryton and Chemic bushings must be field or factory installed in impeller and then reamed to .375".

ITEM	DESCRIPTION	PART NO.
1	Casing screw, 1/4" -20 - stainless steel (6 req'd)	11-0414
2	Casing washer - stainless steel (6 req'd)	11-0121
3	Pump casing, - Ryton® - Glass filed - PVDF® - Carbon Fiber filled	44-4000 44-1097
4	'O' - ring - Viton® - EPDM - Teflon®	44-4005 44-4005A 44-4005B
5	Spindle - ceramic	44-4002
6	Front thrust washer - ceramic	44-0588
7 <sup>1</sup> See Box "A"	Impeller magnet assembly, (includes #15) <sup>2</sup> w/Ryton bushing, std (MRGR) w/carbon bushing, (MRGC) w/Chemic (TFE/MICA) bushing (MRGK) Impeller magnet assembly, PVDF w/carbon bushing, std. (MKGC) w/Chemic bushing (MKGK)	44-4004 44-4013 44-4014A 44-1098 44-1098A
8 <sup>1</sup>	Impeller magnet liner with thrust washer Ryton®, glass filled PVDF, carbon fiber filled	44-4007 44-1096
9 <sup>3</sup>	Rear thrust washer - ceramic	44-0567
10	Drive Magnet assembly	44-4011
11	Motor connecting bracket - Ryton®	44-4008
12	Motor screws, 3/8" - 16 - stn. steel (4 req'd)	11-0371
14	Motor and cord 1/2 HP TEFC 115-230/1/50-60 230-460/3/50-60 1 HP EXP. 115/230/1/50-60 230/460/3/50-60	44-4103 44-4103C 44-0593 44-0593C
15 <sup>4</sup>	Bushings - Ryton® - Chemic (MICA/TFE) - Carbon	44-0540 44-4016A 44-1099
16	Wet end assembly (Includes items #1, 2, 3, 4, 5, 6, 7, 8)	MRGR 44-7445 MRGC 44-7446 MRGK 44-7447 MKGC 44-7448 MKGK 44-7449
17	Pump only (Complete without motor)	MRGR 44-4020 MRGC 44-4020L MRGK 44-4020K MKGC 44-6112 MKGK 44-6112K



# SERFILCO®

2900 MacArthur Blvd.  
Northbrook, IL. 60062-2005  
U.S.A.  
www.serfilco.com

(800) 323-5431  
(847) 509-2900  
Fax: (847) 559-1141  
sales@serfilco.com