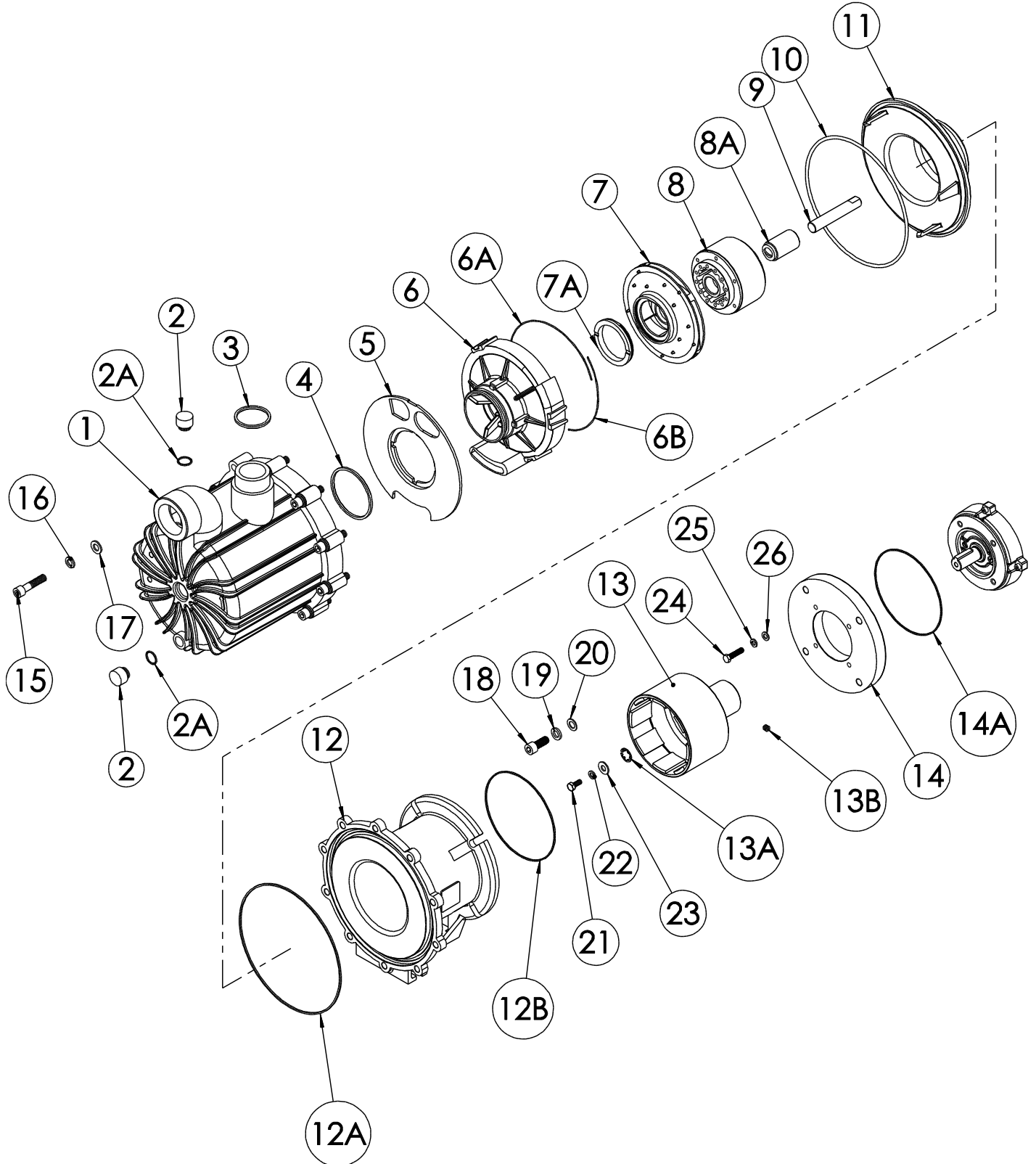




Chemical resistant pumps & filters engineered for industry

SERIES 'FES3' | MAGNETIC COUPLED PUMPS

EXPLODED VIEW PARTS LIST





Series 'FES3' | Magnetic Coupled Pumps

No.	Description	Qty.	PP	PVDF
1	Housing, NPT BSP Flanges 2"x2" Fiberglass Flanges 3"x2" Fiberglass Flanges 2"x2" Steel Unions	1	67-6437 67-6437-2 67-6750 67-7115-2 67-6750-2 67-6749	67-6437-1 67-6437-3 67-6750-1 67-7115-3 67-6750-3 67-6749-1
2	Fill/Drain Plug	2	67-6143	67-6143-1
2A	Fill/Drain Plug O-Ring	2	EPDM FKM	22-2117 22-2117-V
3	Discharge O-ring (BSP Housings Only)	1	EPDM FKM	22-2330 22-2330-V
4	Inner Volute O-Ring	1	EPDM FKM	22-0283 22-0328
5	Separator Plate	1	67-6438	67-6438-1
6	Inner Volute w/ SiC Thrust Ring & Volute/Barrier Seal,	7.00" impeller 6.50" impeller 6.00" impeller 5.50" impeller 5.00" impeller	EPDM seal FKM seal EPDM seal FKM seal EPDM seal FKM seal EPDM seal FKM seal EPDM seal FKM seal	67-7462 67-7459 67-7462-2 67-7459-2 67-7462-4 67-7459-4 67-7462-6 67-7459-6 67-7462-32 67-7459-32
6A	Volute / Barrier Seal	16-1/8"	EPDM FKM	67-7458-1 67-7458
6B	Volute / Barrier Seal	8"	EPDM FKM	67-7457-1 67-7457
7	Impeller Assembly w/ Thrust Ring		See FES3 Impeller Assy. Table	
7A	'FES3' Closed Impeller Thrust Ring Only	1	Fluorosint SiC	67-6950 67-6951
8	Impeller Drive Assy. w/	1	Carbon bushing PTFE bushing Ceramic bushing SiC Bushing	67-6476 67-6476-2 67-6476-6 67-6476-4
8A	Impeller Bushing Only	1	Carbon Filled PTFE Ceramic SiC	67-6476-1 67-6476-3 67-6476-7 67-6476-5
9	Impeller Shaft	1	Ceramic SiC Hastelloy C	67-6450 67-6450-1 67-6450-2
10	Housing O-Ring	1	EPDM FKM	22-0859 22-0861
11	Barrier	1	67-6400-2	67-6400-3
12	Motor Adapter	1	67-6414-1	67-6414-2
12A	Front Motor Adapter O-Ring	Std (opt) (opt)	Buna EPDM FKM	67-6844 67-6845 67-6846
12B	Rear Motor Adapter O-Ring	Std (opt) (opt)	Buna EPDM FKM	67-6847 67-6848 67-6849
13	Outer Drive Magnet Assy. w/ Retaining Ring,	143/145TC frame 182/184TC frame 213/215TC frame 90 frame 100/112 frame 132 frame	1	67-6457-3 67-6453 67-6453-1 67-6457 67-6457-1 67-6457-2
13A	Retaining Ring Only	145TC frame 184TC frame 213TC frame 90 frame 100/112 frame 132 frame	1	67-5709 67-5710 67-6454 67-5712 67-5710 67-6468



Series 'FES3' | Magnetic Coupled Pumps

13B	Set Screws	NEMA frames only	2	67-1084-J	
14	Motor Adapter Flange	213/215TC 90 B14 90 B5 100/112 B14 & 143/145TC 100/112 B5 132 B14 132 B5	1	67-6775 67-6781 67-6780 67-6777 67-6776 67-6779 67-6778	67-6775-1 67-6781-1 67-6780-1 67-6777-1 67-6776-1 67-6779-1 67-6778-1
14A	Motor Adapter Flange O-Ring (NEMA 213/215 Frame Motors Only)	Buna EPDM FKM	1	67-8165 67-8166 67-8167	

No.	Description			Qty.	SS	Ti
15	Housing bolt	Soc HD	M12-1.75x55mm	10	67-6758	67-6759
16	Housing lock washer		M12	10	67-6503	67-6504
17	Housing flat washer		M12	10	67-6505	67-6506
18	Motor adapter bolt,	Soc HD	except 213/215TC 1/2-13x1.25 213/215TC 1/2-13x1.75	4	67-6495 67-6511	67-6498 67-6512
19	Motor adapter lock washer		1/2	4	11-0343	11-2167
20	Motor adapter flat washer		1/2	4	11-3055	11-2168
21	Drive bolt (IEC oEnly),	Hex HD	90 frame M8-1.25x20mm 100/112 frame M10-1.5x30mm 132 frame M12-1.75x30mm	1	11-0905 11-0906 67-6507	11-0905-T 11-0906-T 67-6508
22	Drive lock washer (IEC only),		90 frame 5/16 100/112 frame M10 132 frame M12	1	11-0355 11-0899 67-6503	11-0355-T 11-0899-T 67-6504
23	Drive Flat Washer (IEC Only),		90 frame 7/16 100/112 frame 1/2 SAE 132 frame 1/2 wide	1	11-0916 67-1360-J 67-6509	11-0916-T 67-6200 67-6510
24*	Motor Adapter Flange Bolt, Hex HD		90 frame M8-1.25x30mm Soc HD 100/112 frame M8-1.25x35mm Hex HD 132 frame M10-1.5x30mm Soc HD 143/145TC frame 3/8-16x1"	4	67-8029 67-5589 11-0906 67-1000-J	67-6513 67-6514 11-0906-T 67-7740
25*	Motor Adapter Lock Washer (for IEC with B14 flange only),		90 frame 5/16 100/112 frame M10 132 frame M12	4	11-0355 11-0899 67-5757	11-0355-T 11-0899-T 67-5758
26*	Motor Adapter Flat Washer (for IEC with B14 flange only),		90 frame 5/16 SAE 100/112 frame 5/16 SAE 132 frame	4	67-1293-J N/A	67-3845-J N/A

* Customer must supply motor adapter flange bolt, lock washer and flat washer for IEC frame pumps with B5 flanges.

FE3 Impeller Assemblies

SIZE	Thrust ring			
	PTFE		SiC	
	Impeller Material			
	PP	PVDF	PP	PVDF
7.00"	67-6746	67-6746-1	67-6747	67-6747-1
6.50"	67-6746-2	67-6746-3	67-6747-2	67-6747-3
6.00"	67-6746-4	67-6746-5	67-6747-4	67-6747-5
5.50"	67-6746-6	67-6746-7	67-6747-6	67-6747-7
5.00"	67-6746-8	67-6746-9	67-6747-8	67-6747-9

Product Bulletin:	P-521
Operation and Service Guide:	O-4065