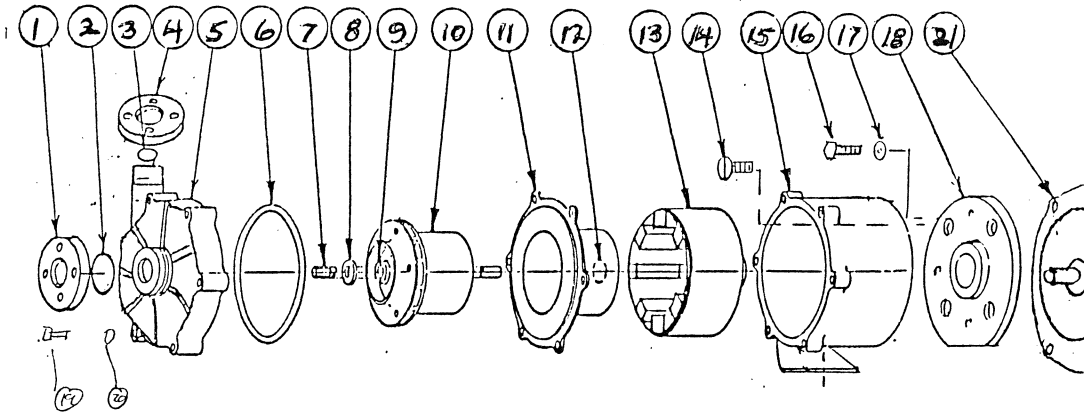


# SERIES "D" 2" x 2" SPC PUMP

PARTS LIST  
P-4050  
JAN. 1989



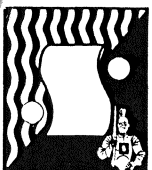
ITEM	DESCRIPTION	PART NO.
1.	Suction flange, CPVC	33-5873
2.	Suction gasket, EPDM Viton	22-0777 22-0778
3.	Discharge 'O' ring, EPDM Viton	22-0779 22-0780
4.	Discharge flange, CPVC	33-5874
5.	Suction casing, Polypropylene	44-6512
6.	'O' ring, EPDM Viton	22-0781 22-0782
7.	Ceramic shaft	44-6513
8.	Front thrust washer	44-6514
9.	Impeller shaft guide	44-6515
10.	Impeller, polypropylene	44-6501
11.	Impeller cup, Polypropylene	44-6516
12.	Rear thrust washer	44-6517
13.	Drive magnet	44-6507
14.	Pump bracket screws	11-2070
15.	Pump bracket	44-6503
16.	3/8-16 x 3/4	11-0371
17.	3/8 Flatwasher	11-0447
18.	Motor Bracket	44-6504
19.	Metric hex bolt M-8 x 40mm	11-2071
20.	5/16 stn.stl. flat washer	11-0122
21.	Motor 1-1/2 H.P.	

F.O.B. Northbrook, Illinois

Terms: Net 30 Days

Minimum order \$25.00

DISTRIBUTED BY



## SERFILCO<sup>®</sup>, LTD.

1777 Shermer Road 708-559-1777  
Northbrook, IL 60062-5360 U.S.A. 800-323-5431  
FAX: 708-559-1995

EASTERN

● One Lark Avenue 717-656-2161  
Leola, PA 17540 FAX: 717-656-0477

WESTERN

● 5005 S. Hampton Street 213-588-0801  
Los Angeles, CA 90058 FAX: 213-588-6826