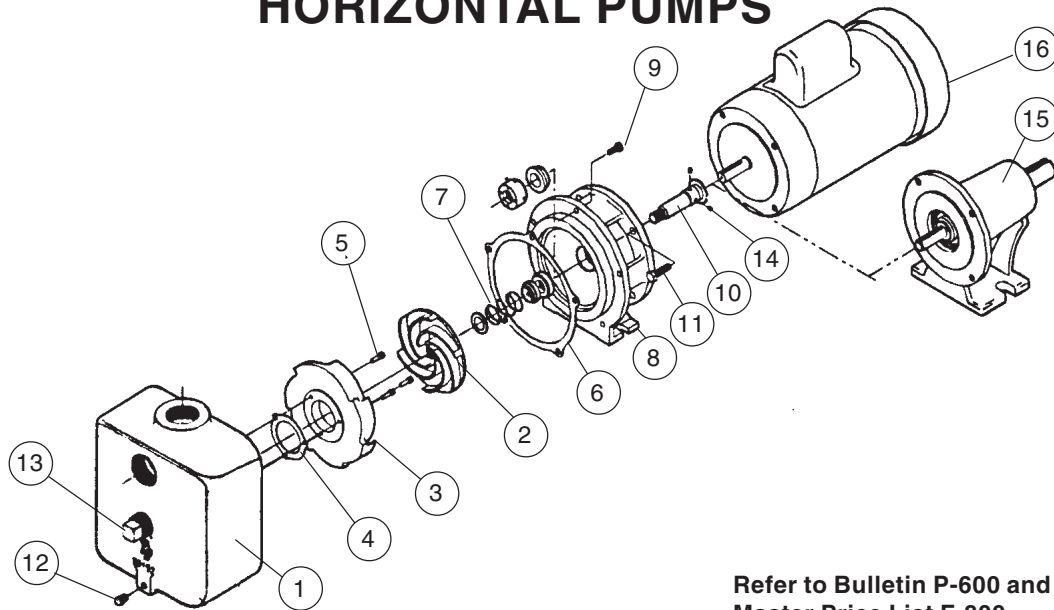




SERIES 'SP150' HORIZONTAL PUMPS



Refer to Bulletin P-600 and
Master Price List F-800.

ITEM	DESCRIPTION	PART NUMBER
1	Volute - cast iron	61-0800
2	Impeller, Diameter 4-3/4, curve #4	61-0801
	" 4-3/4, curve #3	61-0802
	" 4-3/4, curve #2	61-0803
	" 4-1/4, curve #1	61-0804
3	Diffuser	61-0805
4	Diffuser gasket - synthetic fiber - Teflon (optional)	61-0806 61-0807
5	Socket head cap screw, 10-20 x 5/8" - stainless steel	11-2184
6	Volute gasket - synthetic fiber - Teflon (optional)	61-0808 61-0809
7	Single seal M2 seal - Viton M1 seal - EPR	55-0400-1 55-0407-1
8	Bracket	61-0810
9	Hex head bolt, 5/16"-18 x 3/4" - stainless steel	11-0315
10	Shaft w/set screw	61-0811
11	Hex head bolt, 3/8"-16 x 1" (4 req'd)	11-0375
12	Pipe plug, 1/8" - stainless steel	33-6060
13	Pipe plug, 1" - steel	33-5837
14	Slinger, 7/8"	61-0812
15	Power frame	61-0813

16	MOTORS	115-230V/1/60	230-460V/3/60
	Motor - TEFC, 56C		
	3/4 HP	66-2600	66-2601
	1 HP	66-2603	66-2604
	1-1/2 HP	66-2605	66-2595
	2 HP	66-2596	66-2597
	3 HP	-	66-2599
For 110-220V/1/50 or 220-380-440V/3/50 Hz motor, add -5 to part number.			