

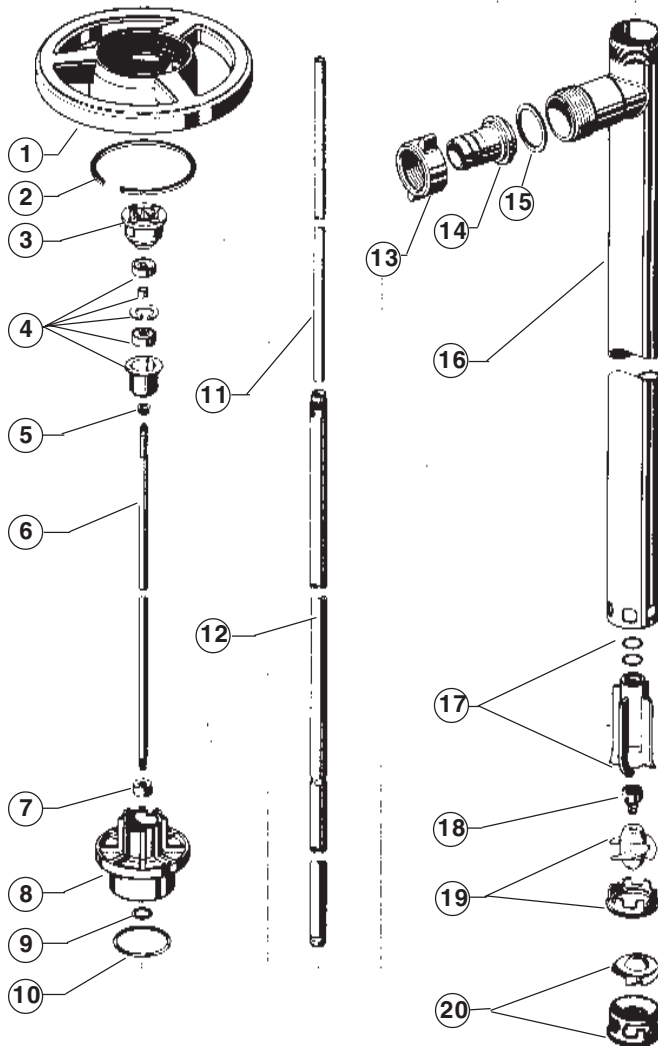


DRUM PUMP, ALUMINUM MECHANICAL SEAL

MODELS	PRICE CODE NOS.
AL8227-1	55-7027
AL8239-1	55-7028
AL8247-1	55-7029

Refer to Operation and Service Guide 0-175

Refer to Master Price List F-800.



ITEM	DESCRIPTION	PART NO.
1	Hand wheel, ABS	55-1842
2	Snap ring, carbon, steel	55-1508
*3	Coupling, nylon	55-7044
*4	Bearing unit, 316SS	55-7045
5	V-Seal, Viton [^]	55-7081
6	Drive shaft, 316SS	
	- 27"	55-7097
	- 39"	55-7098
	- 47"	55-7099
7	Shaft seal, Viton [^]	55-7113
8	Connection flange, aluminum	55-7093
9	'O' ring, Viton [^]	55-7111
10	'O' ring, Viton [^]	55-7112
11	Guide bushing, TFE	
	- 27"	55-7100
	- 39"	55-7101
	- 47"	55-7102
12	Inner pump tube, aluminum	
	- 27"	55-7090
	- 39"	55-7091
	- 47"	55-7092
13	Wing nut, brass	55-1068
14	Hose connector, aluminum	
	- 1" (standard)	55-1065
	- 1-1/4"	55-1066
	- 3/4"	55-1875
15	Seal, TFE	55-1195
16	Outer pump tube, aluminum	
	- 27"	55-7087
	- 39"	55-7088
	- 47"	55-7089
*17	Bearing star complete	
	TFE Ceramic	55-7106
18	Mechanical seal complete	
	Ceramic, carbon, 316SS	55-7107
19	Rotor: for high flow- standard	
	Glass filled ETFE	55-7104
	Rotor baffle, 316SS	55-7105
20	Impeller: for high head- Glass filled ETFE	55-7114
	Impeller wear ring - 316SS	55-7103
	Pump repair tool (not shown)	

*Recommended spare parts
Registered Trademarks:: Viton - Dupont

F.O.B. Northbrook, Illinois

Terms: Net 30 Days

Minimum order - \$25.00



SERFILCO[®], LTD.

2900 MacArthur Blvd. 847-509-2900
Northbrook, IL 60062-2005 U.S.A. 800-323-5431
e-mail: sales@serfilco.com FAX: 847-559-1995
www.serfilco.com

WESTERN

13721 Alma Avenue 310-532-0801
Gardena, CA 90249-2513 FAX: 310-532-0866