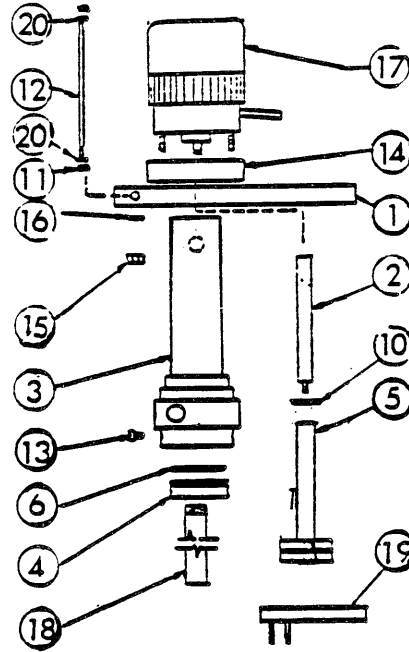


# ECONOMY ALL-PLASTIC SUMP PUMP

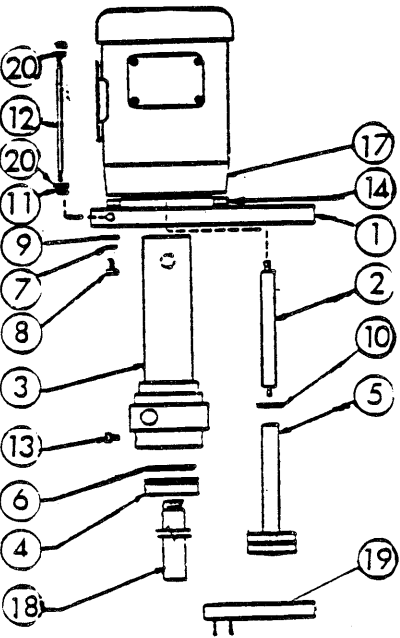
## SERIES "E"

PARTS LIST  
P-2100M  
OCT. 1982

Refer to Master Price List F-800



MODEL: E3/8SC



MODELS: E1/2SC  
E3/4SC  
E1SC  
E1-1/4SC  
E1-1/2SC

ITEM	DESCRIPTION	E3/8SC	F1/2SC	E1/2SC	E3/4SC
		PART NO.	1/2HP MTR. PART NO.	1/6HP MTR. PART NO.	
1	Mounting Plate, CPVC	44-2108	44-2109	44-2129	44-2109
2	Pump Shaft, Stn. Stl.	44-2115	44-2117	44-2116	44-2117
3	Column & Suction Casing, CPVC	44-2123	44-2124	44-2124	44-2125
4	Suction Casing Cover, CPVC	44-2131	44-2132	44-2132	44-2133
		1/2 NPT	3/4 NPT	3/4 NPT	1 NPT
		44-2182	44-2183	44-2183	44-2184
5	Impeller & Sleeve Assembly-open, CPVC Closed impeller	44-2138	44-2139	44-2139	44-2140
*6	"O" ring, ethylene-propylene "O" ring Viton	22-0292	22-0293	22-0293	22-0348
		22-0296	22-0297	22-0297	22-0329
7	Lockwasher, stn. stl.	-	11-0140	11-0355	11-0140
8	Hex bolt, stn. stl.	-	11-0375	11-0362	11-0375
9	Flat washer stn. stl.	-	11-0123	11-0576	11-0123
10	Slinger Washer, Neoprene	55-0132	22-0223	55-0157	22-0223
11	Whizz nut, 1/4-20 Stn. stl.	11-0103	11-0103	11-0103	11-0103
12	Mounting Plate stud, stn. stl.	11-0262	11-0240	11-0262	11-0240
*13	Screw, 1/4-20 Titanium	11-0330	11-0330	11-0330	11-0330
14	Motor spacer	44-2147	33-0394	33-0394	33-0394
15	Hex nut, 8-32 stn. stl.	11-0137	-	-	-
16	Washer, 1/4" size flat, stn. stl.	11-0121	-	-	-
17	Motor 115/230/1/60	**1/12 HP	1/2 HP	1/6 HP	3/4 HP
		44-0715A	66-0957	44-2148	66-0937
		230/1/50	44-0715D	66-0908	44-2148-1
18	Suction Extension CPVC	44-2151	44-2152	44-2152	44-2153
*19	Spanner wrench	99-0192	99-0192	99-0192	99-0192
20	Washer, 1/4" stn. stl.	11-0121	11-0121	11-0121	11-0121

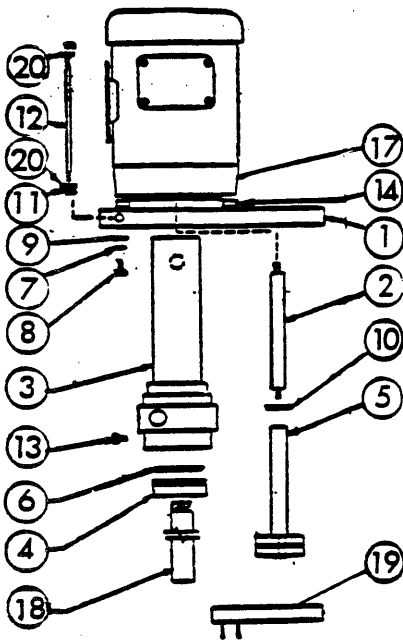
\*Recommended replacement spare parts.

\*\*115 volt only

\*\*\*For pumps manufactured prior to 3-21-78, the new suction casing 44-2181 is interchangeable. Order 44-2181, 44-2180 cover and 22-0537 or 22-0538 "O" ring.

(over)

Refer to Master Price List F-800



MODELS: E1/2SC  
E3/4SC  
E1SC  
E1-1/4SC  
E1-1/2SC

ITEM	DESCRIPTION	E1"SC	E1-1/4SC	E1 1/2 - 1 SC	E1 1/2 - 3 SC
		PART NO.	PART NO.	PART NO.	PART NO.
1	Mounting Plate, CPVC	44-2109	44-2112	44-2155	44-2155
2	Pump Shaft, Stn. Stl.	44-2118	44-2118	44-2156	44-2156
3	Column & Suction Casing, CPVC	44-2126 44-2181***	44-2127	44-2159	44-2159
4	Suction Casing Cover, CPVC	44-2134 1-1/4NPT 44-2180 1-1/2NPT	44-2135 1-1/2NPT 44-2185 2 NPT	44-2160 1-1/2NPT 44-2186 2 NPT	44-2160 1-1/2NPT 44-2186 2 NPT
5	Impeller & Sleeve Assembly-open, CPVC Closed impeller	44-2141	44-2142	44-2158	44-2157
*6	"O" ring, ethylene-propylene "O" ring Viton	22-0294 22-0537*** 22-0298 22-0538***	22-0295 22-0346	22-0300 22-0282	22-0300 22-0282
7	Lockwasher, stn. stl.	11-0140	11-0140	11-0140	11-0140
8	Hex bolt, stn. stl.	11-0375	11-0372	11-0372	11-0372
9	Flat washer stn. stl.	11-0123	11-0123	11-0123	11-0123
10	Slinger Washer, Neoprene	22-0223	22-0223	55-0140	55-0140
11	Whizz nut, 1/4-20 Stn. stl.	11-0103	11-0103	11-0103	11-0103
12	Mounting Plate stud, stn. stl.	11-0240	11-0240	11-0242	11-0242
*13	Screw, 1/4-20 Titanium	11-0330	11-0330	11-0330	11-0330
14	Motor spacer	33-0394	33-0394	33-0394	33-0394
15	Hex nut, 8-32 stn. stl.	-	-	-	-
16	Washer, 1/4" size flat, stn. stl.	-	-	-	-
17	Motor 115/230/1/60 230/1/50 230/460/3/50-60	1 HP 66-0939 - 66-0927	2 HP - - 66-0921	- - 66-1019 (3HP) 66-1018 (5HP)	- - 66-1018 (5HP) 66-1017 (7.5HP)
18	Suction Extension CPVC	44-2154	44-2149	44-2149	44-2149
*19	Spanner wrench	99-0192	99-0192	99-0189	99-0189
20	Washer, 1/4" stn. stl.	11-0121	11-0121	11-0121	11-0121

\*Recommended replacement spare parts.

\*\*115 volt only

\*\*\*For pumps manufactured prior to 3-21-78, the new suction casing 44-2181 is interchangeable. Order 44-2181, 44-2180 cover and 22-0537 or 22-0538 "O" ring.

F.O.B. Glenview, Illinois Terms: Net 30 Days

Minimum Order \$25.00

DISTRIBUTED BY



**SERFILCO, LTD.**

1234 Depot St.  
Glenview, IL 60025

312/998-9300  
Telex: 253699

(Printed in U.S.A.)