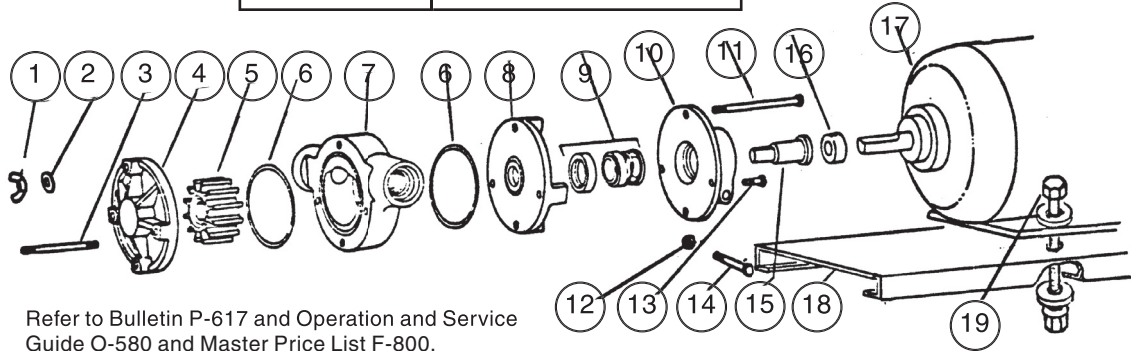




SELF-PRIMING PUMP & MOTOR UNITS

MODELS	PRICE CODE NO.
3/4 JENH	48-0075A
3/4 JEVH	48-0076A



Refer to Bulletin P-617 and Operation and Service Guide O-580 and Master Price List F-800.

ITEM	DESCRIPTION	PART NO.
*1	Wing nut (4 req'd)	11-0101
*2	Flat washer (4 req'd)	44-1901
3	Stud	44-1902
4	End cover	44-1903
*5	Impeller - Neoprene (standard) - Viton	44-1904 44-1905
*6	'O'-ring -Neoprene (standard) -Viton	44-1906 44-1907
7	Body	44-1908
8	Seal housing	44-1909
*9	Seal assembly - Buna N (standard) - Viton	44-1910 44-1911
10	Adapter	44-1914
11	Bolt	44-1915
12	Nut	44-1917
13	Bolt	44-1913
14	Bolt	44-1918
*15	Drive sleeve	44-1912
16	Collar	44-1916
17	Motor, 1/2 HP, TEFC 115/1/60 w/line cord	44-1922
18	Base, 9" x 13" - vinyl coated steel	77-0103-1
19	Hex head bolt 1/4"-20 (4 req'd) Flat washer 1/4" (8 req'd) Whiz locknut 1/4" (4 req'd)	11-0415 11-0121 11-0103

The following items are not shown.

20	3/4" I.D. x 10 ft. clear vinyl reinforced hose (2 req'd) Hose adapter (not shown) 1/2" MNPT to 3/4" hose - CPVC (2 req'd) Hose clamps (not shown)	22-0620 33-1558 22-0505
21	Pump assembly - Buna N (standard) - Viton Pump & motor assembly - Buna N (standard)	44-1919 44-1920 44-1921

*Recommended spare parts.

(We suggest you order the recommended spare parts required for pump servicing, and group your orders whenever possible to minimize handling and processing costs, in an effort to keep your cost of operation as low as possible.)

