

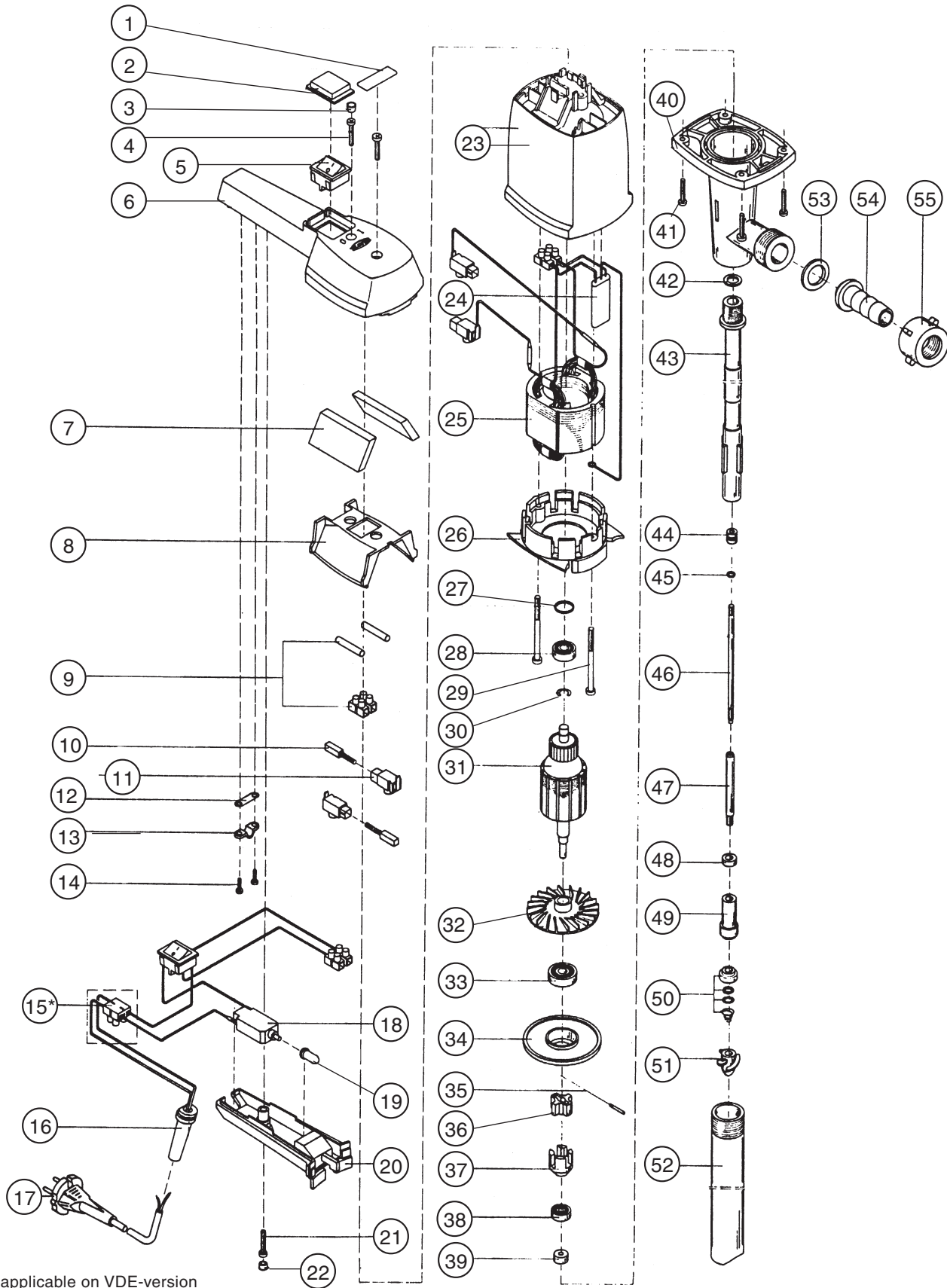


LAB PUMP

MODELS	
PP8327	PP8339

Refer to Bulletin P-407 and Operation and Service Guide O-165.

ITEM	DESCRIPTION	PP8327-1-115, PP8339-1-110, PP8339-1-220	PP8327-2-110, PP-8327-2-220, PP8339-2-110, PP8339-2-220
		PART NUMBERS	
1	Label	950-60-009	950-60-009
2	Switch cover	303-00-034	303-00-034
3	Blanking plug (2 req'd)	303-00-054	303-00-054
4	Screw (2 req'd)	902-25-000	902-25-000
5	Switch on/off	936-00-012	936-00-012
6	Handle	303-00-051	303-00-051
7, 8	Splash protection covers	303-00-062	303-00-062
9	Wire connector (2 pole)	935-05-002	935-05-002
10	Carbon brush (2 req'd)	944-01-011	944-01-011
11	Carbon brush holder (2 req'd)	944-00-027	944-00-027
12	Hard paper holder	935-02-003	935-02-003
13	Clamp	935-02-002	935-02-002
14	Clamp screw (2 req'd)	902-15-000	902-15-000
16	Cable sleeve	935-01-015	935-01-015
17	Cable with plug	303-00-044	303-00-044
18	Overload protection switch 115V	936-03-012	936-03-012
	Overload protection switch 220V	936-03-014	936-03-014
19	Dust cap	936-03-011	936-03-011
20	Handle cover (lower)	303-00-052	303-00-052
21	Screw	902-25-000	902-25-000
22	Blanking plug	303-00-054	303-00-054
23	Motor housing	303-00-050	303-00-050
25	Stator 115V	303-00-020	303-00-020
	Stator 220V	303-00-010	303-00-010
26	Reception ring	303-00-031	303-00-031
27	"O"-ring	925-23-006	925-23-006
28	Grooved ball bearing (upper)	922-20-002	922-20-002
29	Screw (2 req'd)	902-55-000	902-55-000
30	Retaining clip	908-05-007	908-05-007
31	Armature 115V	303-00-037	303-00-037
	Armature 220V	303-00-035	303-00-035
32	Fan	303-00-030	303-00-030
33	Grooved ball bearing (lower)	922-20-001	922-20-001
34	Support flange	303-00-250	303-00-250
35	Drive pin	914-47-002	914-47-002
36	Coupling star	303-40-637	303-40-637
37	Coupling cage	303-40-635	303-40-635
38	Grooved ball bearing	922-00-000	922-00-000
39	Felt ring	925-02-004	925-02-004
40	T-piece	303-40-640	303-40-639
41	Screw (4 req'd)	902-25-000	902-25-000
42	Flat seal (Viton)	925-14-000	925-14-000
43	Inner tube with centering star 27"	303-40-605	303-40-655
	Inner tube with centering star 39"	303-40-635	303-40-659
44, 45	Bushing with "O"-ring 27" (4 req'd)	920-30-001	920-30-001
	Bushing with "O"-ring 39" (6 req'd)	920-30-001	920-30-001
46	Shaft (upper) 27"	303-40-625	303-40-625
	Shaft (upper) 39"	303-40-628	303-40-628
47	Shaft (lower)	303-40-620	303-40-620
48	Radial shaft seal (Viton)	925-11-004	925-11-004
49	Lower bushing (carbon)	920-51-008	920-51-008
50	Mechanical seal	925-16-006	925-16-006
51	Impeller 19 mm	303-40-050	—
	25 mm	—	302-44-501
52	Outer tube 27"	303-40-600	303-40-684
	Outer tube 39"	303-40-603	303-40-683
53	Gasket for hose connection	925-34-001	925-34-001
54	Hose connection 1/2"	959-05-099	959-05-099
	Hose connection 3/4"	959-05-100	959-05-100
55	Nut for hose connection	907-90-030	907-90-030
	Mixing tube (PP) (option)	303-40-645	303-40-645
	Shutter disc (used for mixing tube) (option)	925-39-011	925-39-011



* not applicable on VDE-version

F.O.B. Northbrook, Illinois

Terms: Net 30 Days

Minimum order \$25.00



SERFILCO® LTD.

2900 MacArthur Blvd. 847-509-2900
 Northbrook, IL 60062-2005 U.S.A. 800-323-5431
 e-mail: sales@serfilco.com FAX: 847-559-1995
 www.serfilco.com

WESTERN

13721 Alma Avenue 310-532-0801
 Gardena, CA 90249-2513 FAX: 310-532-0866