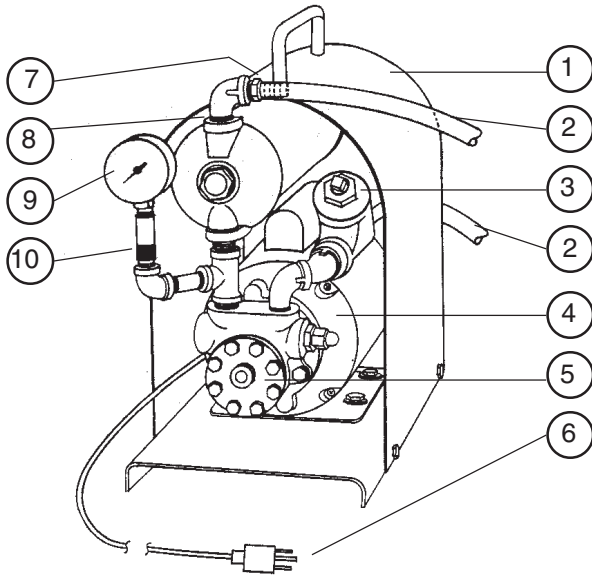




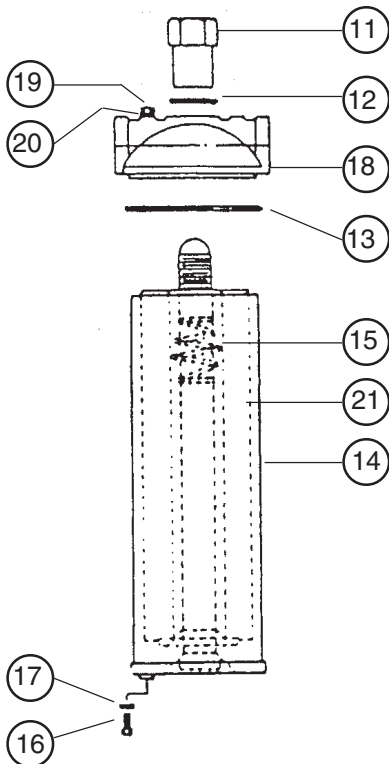
HAND-CARRY TRANS-O-FILTER[®]

MODEL	PRICE CODE NUMBER
S10 1/2S TS3	1402A
S20 1/2S TS3	1429

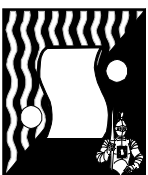


Refer to Bulletin O-104, Operation & Service Guide O-180, Parts List P-3200 and Master Price List F-800.

ITEM	DESCRIPTION	PART NO.
1	Base and cover	77-0131
2*	Vinyl tubing, 3/8" I.D. x 1/2" O.D.	22-0422
3	Strainer, 1/2" NPT 30 mesh	33-0802
4	Motor only, see Parts List P-3200	
5	Pump only, see Parts List P-3200 Pump and 1/3 HP motor, 115/230/1/60, TEFC, 1725 RPM (Standard)	44-0402
6	Electric cord, 8 feet	66-0302
7	Brass hose adapter	22-0634
8	Filter chamber, 10" " " " 20"	78-1500 78-1519
9	Pressure gauge, 0-60 PSI	99-0101
10	Gauge snubber, 1/4" x 1/4"	99-0102
11	Filter cover nut	78-1551
12*	Cover nut gasket - (fiber)	78-1555
13*	"O" ring - (Buna)	78-1521
14	Filter chamber housing, 10" " " " 20"	78-1529 78-1533
15	Filtering tube centering spring	78-1524
16	Drain plug	78-1541
17	Drain gasket (fiber)	78-1545
18	Head C.S. 1/2" ports	78-1565
19	Vent screw	78-1577
20*	Vent gasket (fiber)	78-1581
21*	Cartridge, refer to bulletin M-109	



*Recommended Spare Parts



SERFILCO[®], LTD.

2900 MacArthur Blvd. 847-509-2900
Northbrook, IL 60062-2005 U.S.A. 800-323-5431
e-mail: sales@serfilco.com FAX: 847-559-1995
www.serfilco.com

DISTRIBUTED BY

WESTERN

13721 Alma Avenue 310-532-0801
Gardena, CA 90249-2513 FAX: 310-532-0866