



SERIES 'RC' | HORIZONTAL PUMPS

HEAVY DUTY CAST IRON CONSTRUCTION FOR:

WET PROCESSING SOLUTIONS / MACHINE TOOL COOLANTS / CHEMICAL TRANSFER COOLING TOWERS / CIRCULATION FOR WASHING OR RINSING

- **Flows to 420 U.S. GPM or 82 ft. TDH @ 60 Hz**
(1325 LPM or 17.4m @ 50 Hz)
- **316 stainless steel shaft, cast iron mounting bracket**
- **Single or double mechanical seal**
Carbon/ceramic
EPDM or Viton® elastomers
- **Centrifugal, quiet, vibration-free**
- **Motors are standard NEMA C face, TEFC**



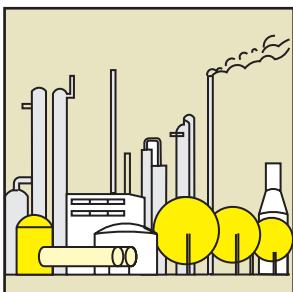
The Series 'RC' horizontal pump is a compact close-coupled design. A high efficiency, semi-open cast iron impeller allows for less clogging and quick cleaning. The components are cast so there are no welds to break. In addition, the cast iron construction provides improved corrosion resistance over similar welded styles.

The Series 'RC' pump is available with a choice of mechanical seals, Type 21 single or double. The seal is mounted "in-board" and, thus tends to be self-cleaning. It is available as a single seal solution

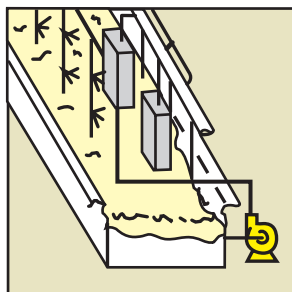
flush or as a double seal which requires external liquid to flush. When ordered with a double seal, the pump will better handle abrasives, solutions which tend to crystallize, and dry run operation.

Series 'RC' pumps are constructed of cast iron with a synthetic fiber gasket. Standard pumps feature EPDM or Viton elastomers with ceramic and carbon seal faces. These pumps use a standard NEMA C face motor. Motors are TEFC, 3450 RPM @ 60 Hz or 2850 RPM @ 50 Hz.

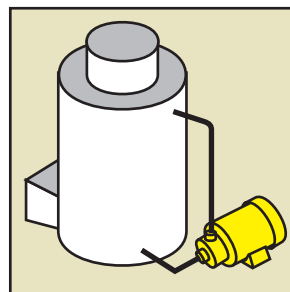
Viton is registered trademark of DuPont Dow Elastomers.



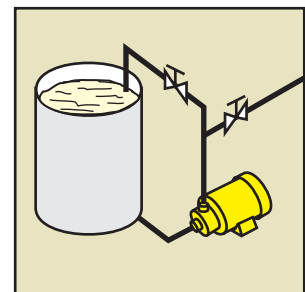
PETROCHEMICAL



SPRAY WASHERS

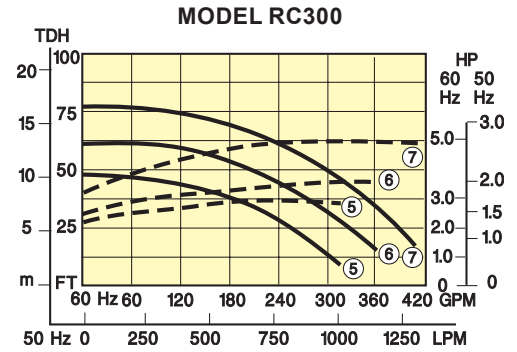
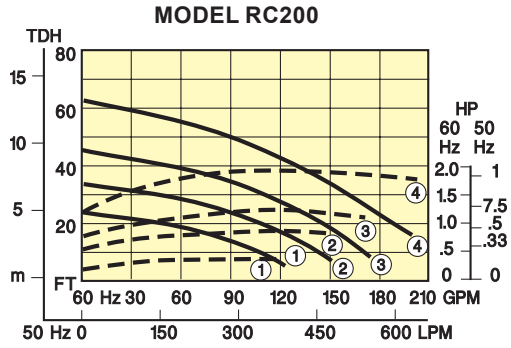


RECIRCULATION OF
COOLING TOWERS

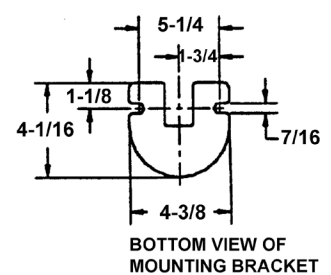
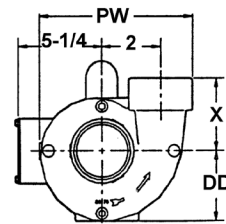
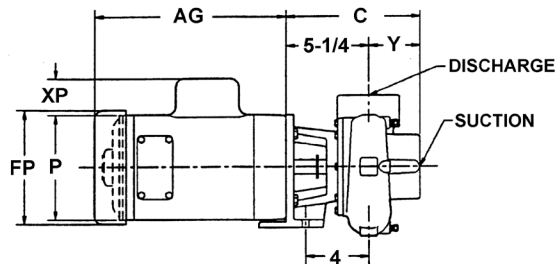


CHEMICAL
TRANSFER PUMPING

SERIES 'RC' PUMPS specifications and ordering information



DIMENSIONS



MODEL	MOTOR HP 3600 RPM 56CFRM	DIMENSIONS (Inches)											WT. Lbs.		
		AG	FP	P	XP	C	Y	PW	Z	X	DD	SUCTION		DISCHARGE	
RC200	1/3	8-1/2	7-3/16	6-7/8	2-1/16										63
	1/2	8-3/4	7-3/16	6-7/8	2-1/16										63
	3/4	9-1/4	7-3/16	6-7/8	2-1/16										63
	1	9-3/4	7-3/16	6-7/8	2-1/16	8-1/8	2-7/8	7-1/8	2-1/2	3-3/4	3-1/2	2" NPT	2" NPT		64
	1-1/2	10-1/2	7-3/16	6-7/8	2-1/4										70
	2	11-1/8	7-3/16	6-7/8	2-1/4										72
RC300	2	11-1/8	7-3/16	6-7/8	2-1/4										75
	3	12-3/8	7-3/16	6-7/8	2-1/4	8-9/16	3-5/16	9-5/8	3-11/16	4-1/2	4-3/8	3" NPT	3" NPT	88	
	5*	13-5/8	8-1/2	7-7/8	2-1/4									115	

NOTE: 1. Motor dimensions will vary by model and make. Dimensions are to be used for reference only.
 2. For engineering purposes, Model RC300 has been used to create drawing.
 3. All dimensions have been rounded to the nearest sixteenth of an inch. * 184C frame motor

TO ORDER, use Price Code Number

TABLE I

RC200 PUMP - MOTOR single seal (230/460V/3/60) TEFC		
FLOW CURVE NO.	MODEL NUMBER	PRICE CODE NO.
1	RC200 - 1L(M1)-D.5	61-0511 G
2	RC200 - 2L(M1)-D.75	61-0521 H
3	RC200 - 3L(M1)-D1.5	61-0531 K
4	RC200 - 4L(M1)-D2.0	61-0541 L
RC300 PUMP - MOTOR single seal (230/460V/3/60) TEFC		
5	RC300 - 5L(M1)-D3.0	62-0551 M
6	RC300 - 6L(M1)-D5.0	62-0561 N
7	RC300 - 7L(M1)-D5.0	62-0571 N

TO ORDER FROM TABLE I (60 Hz)

Select pump-motor model from flow curve number providing the desired performance. Motor horsepower is non-overloading for 1.0 specific gravity and 60 Hz operation.

TO ORDER FROM TABLE II

Determine pump-motor model for a specified GPM, TDH, mechanical seal and specific gravity. Select performance point on curve and size horsepower from corresponding numbered dotted line vertically above or below performance point. Read required horsepower at right ordinate and multiply by specific gravity. Select pump model components and Price Code Numbers for Table II.

TABLE II

PUMP		IMPELLER		MECHANICAL SEAL		TEFC MOTOR (3450/2850)							
MODEL	PRICE CODE NO.	FLOW CURVE NO.	ADD TO ...		MATERIAL (SOLUTION CONTACT)	ADD TO ...		HP	SINGLE PHASE ¹		THREE PHASE ¹		
			MODEL NUMBER	PRICE CODE NO.		MODEL NUMBER	PRICE CODE NO.		ADD TO ...		ADD TO ...		
									MODEL NUMBER	PRICE CODE NO.	MODEL NUMBER	PRICE CODE NO.	
RC200	61-05	1	1	1	SINGLE MECHANICAL SEAL EPDM, carbon, ceramic Viton, carbon, ceramic	L(M1)	1	.3	- C.3	A	- D.3	F	
RC300	62-05	2	2	2		V(M2)	2	.5	- C.5	B	- D.5	G	
		3	3	3		DOUBLE MECHANICAL SEAL EPDM, carbon, ceramic Viton, carbon, ceramic	L(M1XM1)	3	.75	- C.75	C	- D.75	H
		4	4	4			V(M2XM1)	4	1	- C1.0	D	- D1.0	J
		5	5	5			1.5	- C1.5	E	- D1.5	K		
		6	6	6			2.0	--	--	--	- D2.0	L	
		7	7	7			3.0	--	--	--	- D3.0	M	
							5.0	--	--	--	- D5.0	N	

F.O.B. Northbrook, Illinois
 Specifications subject to change without notice.

¹ Single phase - 115-208-230V/1/60 or 220-440V/1/50
 Three phase - 208-230-460V/3/60 or 380-415V/3/50

For 50 Hz, add -50 to Model No. and 5 to Price Code No.

