



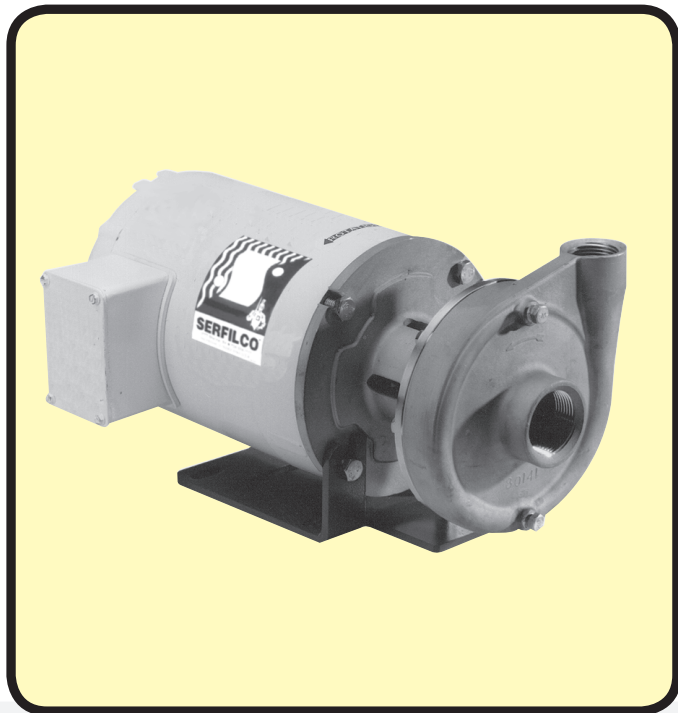
SERFILCO®

Chemical resistant pumps & filters engineered for industry

BULLETIN
P-108_H
10/21/20
Page 1 of 4

SERIES 'HCI' & 'HSS' HORIZONTAL PUMPS

HEAVY DUTY CAST IRON or 316SS CONSTRUCTION FOR:



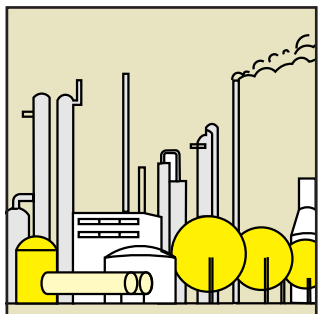
ACIDS / ALKALIES / SOLVENTS WET PROCESSING SOLUTIONS D. I. WATER / FERTILIZERS

- Flows to 160 U. S. GPM or 90 ft. TDH @ 60 Hz (510 LPM or 19.5m @ 50 Hz)
- Available in cast iron or all 316 stainless steel solution contact
- Single or double mechanical seal
Viton® or EPDM elastomers
- 316 stainless steel shaft adapter
- Centrifugal, quiet, vibration-free
- Includes steel mounting base
- Motors are standard NEMA 'C' face
TEFC or explosion-proof

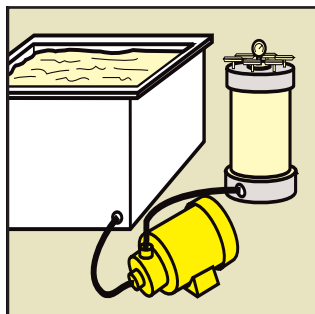
The Series 'HCI' and 'HSS' Horizontal Pumps feature compact close-coupled design. A high efficiency semi-open impeller allows for less clogging and quick cleaning.

Since the components are cast, there are no welds to break. Also, cast construction provides a superior corrosion resistance over similar welded styles.

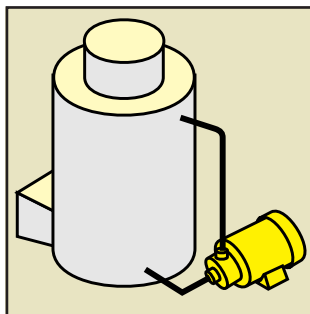
The Series 'HCI' and 'HSS' pumps feature the most widely accepted industrial mechanical seal designated as Type 21. This seal is mounted "in-board" and, thus tends to be self-cleaning. The seal is available as a single seal solution flush or as a double seal which uses external liquid as a flush. By adding the double seal, these pumps can better handle abrasives / salts and be protected from running dry.



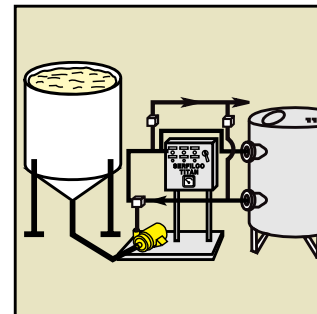
PETROCHEMICAL



CLEANING & DESCALING



FUME SCRUBBING
& SPRAYING

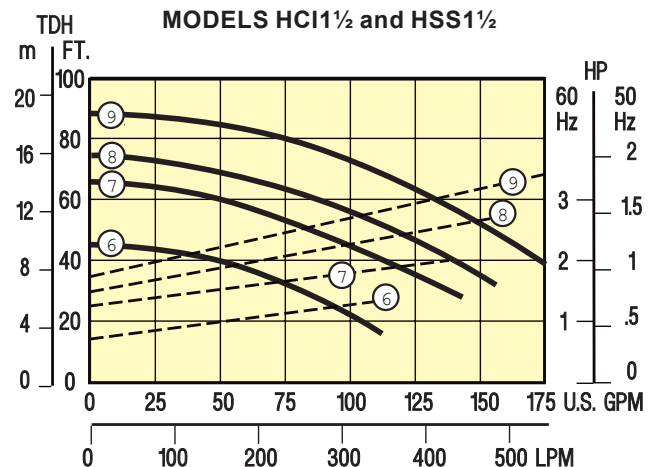
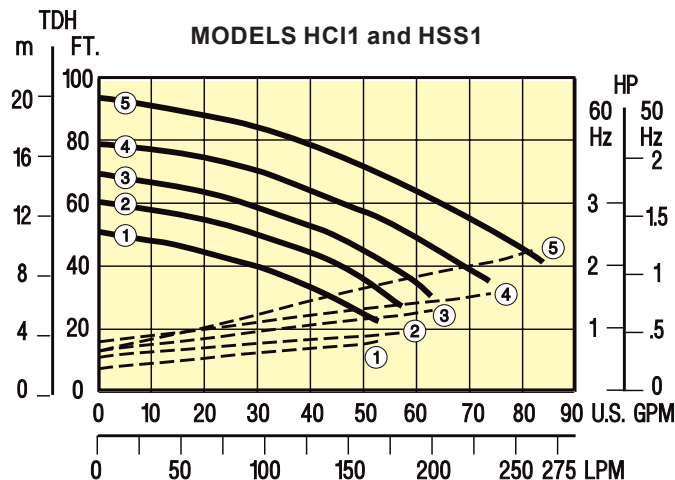


WASTE TREATMENT



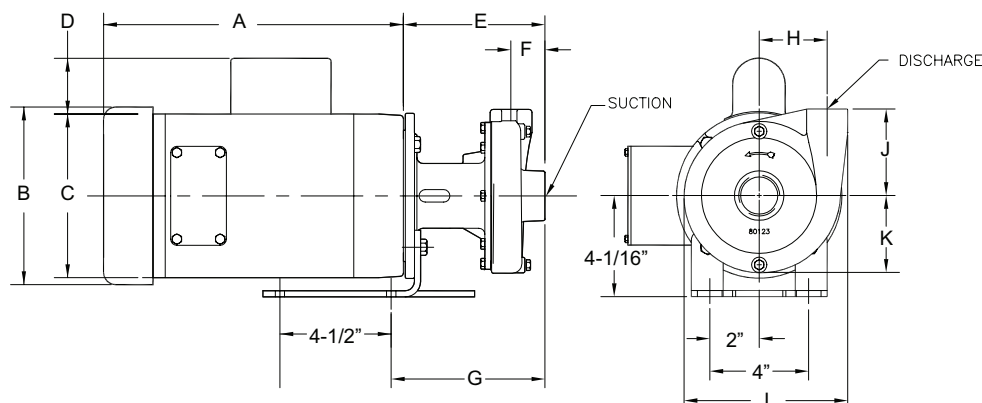
Pumps are constructed of cast iron or 316 stainless steel for maximum corrosion resistance. Gasket is a synthetic fiber with cast iron; Teflon® with 316SS. Both the single and double inboard seal assemblies are available in either EPDM or Viton®. Double seal is recommended for flushing the seal chamber with

water when abrasives are present or for certain other critical conditions. The stainless steel shaft adapter protects the motor shaft and allows the use of standard NEMA motor. Motors are 3450 RPM @ 60Hz or 2850 RPM @ 50 Hz, TEFC or EXP. Single phase TEFC motors include 8 ft. (2.4m) line cord.



DIMENSIONS

MODEL	HP	SUCT.	DISCH.	DIMENSIONS (inches)										WEIGHT	
		NPT (in)		A	B	C	D	E	F	G	H	J	K	L	Lbs. (kg.)
HCI1 & HSS1	3/4	1-1/4	1	9-1/4	6-1/8	5-3/8	2-1/16	5-3/4	1-3/8	6-1/4	2-3/4	3-1/2	3-1/8	7	39 (18)
	1			9-3/4	6-1/8	5-3/8	2-1/16								43 (20)
	1-1/2			10-1/2	7-3/16	6-7/8	2-1/16								49 (22)
	2			11-1/8	7-3/16	6-7/8	2-1/4								65 (30)
HCI1½ & HSS1½	1	2	1-1/2	9-3/4	6-1/8	5-3/8	2-1/16	6-1/4	1-11/16	6-3/4	3-1/8	3-13/16	3-7/8	8-1/4	63 (29)
	1-1/2			10-1/2	7-3/16	6-7/8	2-1/16								57 (26)
	2			11-1/8	7-3/16	6-7/8	2-1/4								62 (28)
	3			12-3/8	7-3/16	6-7/8	2-1/4								65 (29)





TO ORDER

TABLE I

Select pump-motor model from flow curve number providing the desired performance. Motor horsepower is non-overloading for 1.0 specific gravity and 60 Hz operation.

HSS1 PUMP - MOTOR single seal (230-460V/3/50-60) TEFC		
FLOW CURVE NO.	MODEL NUMBER	PRICE CODE NO.
1	HSS1-1V(M2)-D1.0	61-0112G
2	HSS1-2V(M2)-D1.5	61-0122H
3	HSS1-3V(M2)-D1.5	61-0132H
4	HSS1-4V(M2)-D2.0	61-0142J
5	HSS1-5V(M2)-D3.0	61-0152K
HSS1½ PUMP - MOTOR single seal (230-460V/3/50-60) TEFC		
6	HSS1½-6V(M2)-D1.5	62-0162H
7	HSS1½-7V(M2)-D2.0	62-0172J
8	HSS1½-8V(M2)-D3.0	62-0182K
9	HSS1½-9V(M2)-D5.0	62-0192L

TABLE II

Determine pump-motor model for a specified GPM, TDH, mechanical seal and specific gravity. Select performance point on curve and size horsepower from corresponding numbered dotted line vertically above or below performance point. Read required horsepower at right ordinate and multiply by specific gravity. Select pump model components and Price Code Numbers from Table II.

PUMP

MODEL	PRICE CODE NO.
HCI1	61-03
HCI1½	62-03
HSS1	61-01
HSS1½	62-01

IMPELLER

FLOW CURVE NO.	ADD TO . . .	
	MODEL	PRICE CODE NO.
1	1	1
2	2	2
3	3	3
4	4	4
5	5	5
6	6	6
7	7	7
8	8	8
9	9	9

MECHANICAL SEAL

MATERIAL (SOLUTION CONTACT)	ADD TO . . .	
	MODEL NUMBER	PRICE CODE NO.
SINGLE MECHANICAL SEAL		
EPDM, carbon, ceramic	L(M1)	1
Viton, carbon, ceramic	V(M2)	2
EPDM, silicon carbide	L(M8)	5
Viton, silicon carbide	V(M8)	6
DOUBLE MECHANICAL SEAL		
EPDM, carbon, ceramic	L(M1xM1)	3
Viton, carbon, ceramic	V(M2xM1)	4
EPDM, silicon carbide	L(M8xM1)	7
Viton, silicon carbide	V(M8xM1)	8

TEFC MOTOR ¹ (3450 RPM / 2850 RPM)

HP	SINGLE PHASE ²		THREE PHASE ²	
	ADD TO . . .		ADD TO . . .	
	MODEL	PRICE CODE NO.	MODEL	PRICE CODE NO.
.75	-C.75	B	-D.75	F
1	-C1.0	C	-D1.0	G
1.5	-C1.5	D	-D1.5	H
2.0	—	—	-D2.0	J
3.0	—	—	-D3.0	K
5.0	—	—	-D5.0	L

¹ For explosion-proof motors (UL and CSA listed for Class I, Group D or Class II, Group F & G), add X to Model No. and Price Code No. EXP motors are 60 Hz only.

² Single phase - 115-208-230V/1/60 or 220-440V/1/50

Three phase - 208-230-460V/3/60 or 380-415V/3/50.
All motors are 3450 or 2850 RPM.

Registered trademarks:



PERFECT PUMPS FOR CHEMICALS

BULLETIN
P-108
02/20/20
Page 4 of 4

Proudly Made in the USA, SERFILCO Offers the Widest Range of Chemical Pumps Anywhere.

'EH' Vertical Pump

- Can Run Dry
- Extended Column to 10'
- Flows to 185 gpm, 145 ft. TDH



'HE' Horizontal Pump

- Single or Double Mech. Seal
- Variety of Material Types
- Flows to 175 gpm, 140 ft. TDH



'ME' Magnetic Coupled Pump

- Seal-less Magnetic Coupled
- Polypropylene or PVDF
- Flows to 95 gpm, 54 ft. TDH



'EF' Vertical Pump

- Can Run Dry
- Suction Extension to 3'
- Flows to 400 gpm, 170 ft. TDH



'HF' Horizontal Pump

- Single or Double Mech. Seal
- Variety of Material Types
- Flows to 400 gpm, 160 ft. TDH



'FE' Magnetic Coupled Pump

- Seal-less Magnetic Coupled
- Polypropylene or PVDF
- Flows to 130 gpm, 97 ft. TDH



'EHM' Vertical Pump

- Can Run Dry
- Suction Extension to 3'
- Flows to 650 gpm, 115 ft. TDH



'HA' Horizontal Pump

- Single or Double Mech. Seal
- Machined from Solid CPVC
- Flows to 1200 gpm, 115 ft. TDH



'FES' Magnetic Coupled Pump

- Seal-less Magnetic Coupled
- Polypropylene or PVDF
- Flows to 250 gpm, 175 ft. TDH

