

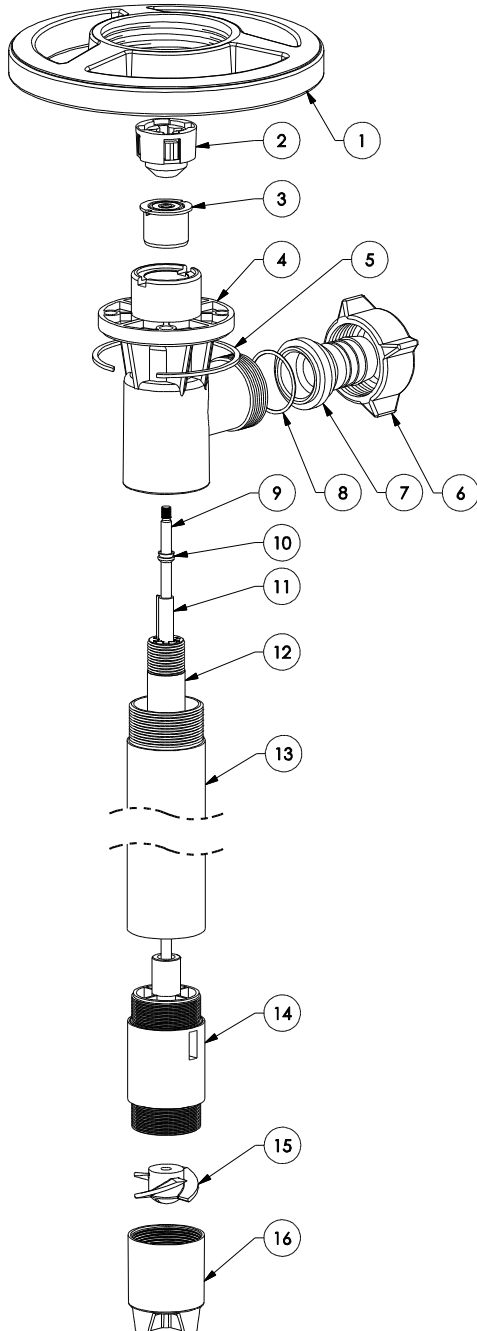
SERFILCO®

Series 'DP' | Drum Pump

2900 MacArthur Blvd. Northbrook, IL. USA 60062 WWW.SERFILCO.COM (800) 323-5431

PARTS LIST
P-1010
02/13/12
Page 1 of 1

	27"	39"	47"	60"	72"
CPVC	CPVC8327-1	CPVC8339-1	CPVC8347-1	CPVC8360-1	CPVC8372-1
Price Code	52-5200	52-5201	52-5202	52-5203	52-5204
PPP	PPP8327-1	PPP8339-1	PPP8347-1	PPP8360-1	PPP8372-1
Price Code	52-6000	52-6001	52-6002	52-6003	52-6004
PVDF	KY8327-1	KY8339-1	KY8347-1	KY8360-1	KY8372-1
Price Code	52-4004	52-4000	52-4001	52-4002	52-4003
PP	PP8327-1	PP8339-1	PP8347-1	PP8360-1	PP8372-1
Price Code	52-1008	52-1000	52-1001	52-1003	52-1005



NO	DESCRIPTION	CPVC	PPP	PVDF	PP
1	Hand wheel PP		52-1842		
2 ¹	Coupling Nylon		52-1004		
3 ¹	Bearing		52-1038		
4	Discharge housing	52-5028	52-6028	52-4028	52-1028
5	Snap ring ST		52-1508		
6	Wing nut	52-5106	52-6106	52-4106	52-1106
7	Hose ø1" ø3/4"	52-5082 52-5051	52-6082 52-6051	52-4082 52-4051	52-1082 52-1051
8	O-Ring FKM	-	22-2026-V	-	-
9	Drive shaft 27" Hast C		52-1543		
	39"		52-1544		
	47"		52-1545		
	60"		52-1546		
	72"		52-1547		
10	V-seal PTFE FKM	52-4029	52-4029	52-4029	- 55-7081
11	Guide sleeve 27" PTFE		52-1513		
	39"		52-1514		
	47"		52-1515		
	60"		52-1613		
	72"		52-1614		
12	Inner Tube 27"	52-5600	52-6600	52-4600	52-1600
	39"	52-5601	52-6601	52-4601	52-1601
	47"	52-5602	52-6602	52-4602	52-1602
	60"	52-5615	52-6615	52-4615	52-1615
	72"	52-5616	52-6616	52-4616	52-1616
13 ²	Outer Tube 27"	52-5604	52-6604	52-4604	52-1604
	39"	52-5603	52-6603	52-4603	52-1603
	47"	52-5605	52-6605	52-4605	52-1605
	60"	52-5617	52-6617	52-4617	52-1617
	72"	52-5618	52-6618	52-4618	52-1618
14 ^{1,2}	Pump housing	52-5524	52-6524	52-4607	52-1524
15	Impeller high head	52-5608	52-6608	52-4608	52-1608
			52-2706-HH		
16 ²	Pump foot high head	52-5609	52-6609	52-4609	52-1609
		52-5609-HH	52-6609-HH	52-4609-HH	52-1609-HH

- 1) Recommended spare parts
- 2) Have "Left Hand" threads



DO NOT USE PLASTIC FOR PUMPING FLAMMABLES

Product Bulletin	P-402
Operation & Service Guide	O-0176