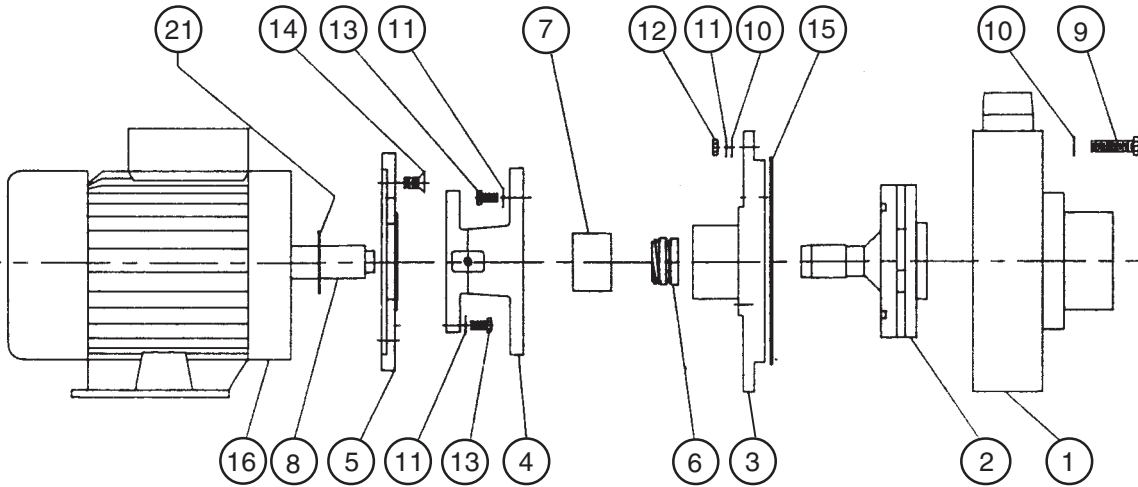




# SERIES 'H' HORIZONTAL PUMP

## SINGLE MECHANICAL SEAL

For pumps built after 3-93.



Refer to Bulletin P-202, Operation and Service Guide  
O-120 and Master Price List F-800.

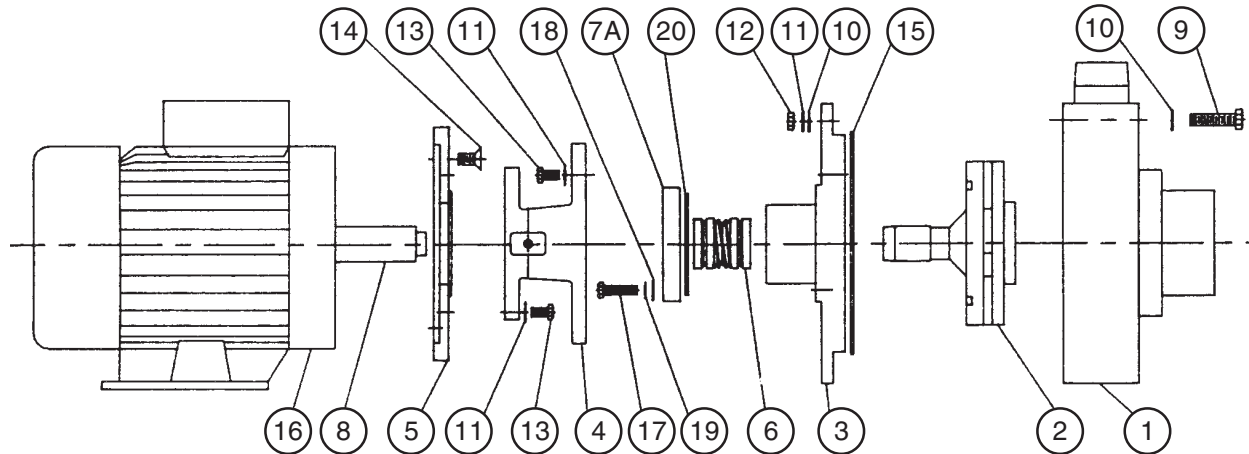
ITEM	DESCRIPTION	PART NUMBER				
		H3 x 2 x 5½	H3 x 2 x 6¼	H3 x 2 x 7½	H4 x 3 x 8	H4 x 3 x 9
1	Suction casing - CPVC	44-6255 A		44-6255	43-0758	43-0920
21	Impeller assembly - CPVC	44-7368	44-7440	44-7441	44-7390	44-7533
3	Support casing - CPVC	44-6268			44-7393	44-7538
4	Motor connection bracket	44-6244 1				
5	Adapter plate	44-6249				
6 <sup>1</sup>	Single Mechanical seal, L(M1) Ethylene propylene, carbon, 304SS, ceramic V(M2) Viton, carbon, 304SS, ceramic V(M3) Viton, carbon, 304SS, fluoride resistant ceramic L(M8) EPDM, silicon carbide, 304SS V(M8) Viton, silicon carbide, 304SS	55-0482 55-0481 55-0487 55-0516 55-0484				
7	Mechanical seal spacer - PVC	44-7056				
8	Shaft - stainless steel	44-7439			44-7394 <sup>2</sup>	
9	Casing bolt, 3/8"-16 - stainless steel (8 req'd)	11-2064			11-2149	
10	Washer, 3/8" - stainless steel (16 req'd)	11-0126				
11	Lock washer, 3/8" - stainless steel (18 req'd)	11-0140				
12	Nut, 3/8"-16 - stainless steel (8 req'd)	11-0105				
13	Hex head bolt, 3/8"-16 - stainless steel (10 req'd)	11-0375				
14	Flat head bolt, 1/2"-13 - stainless steel (4 req'd)	11-0407				
15	"O"-ring - EPDM - Viton	22-0768 22-0769			22-0773 22-0774	22-0768 22-0769
16	Motor, 10 HP, 3450 RPM 208-230/460/3/60, 215 TCZ 15 HP, 3450 RPM 208-230/460/3/60, 215 TCZ 5.0 HP, 1725 RPM 208-230/460/3/60, 184 TCZ 7.5 HP, 1725 RPM 208-230/460/3/60, 213 TCZ 10 HP, 1725 RPM 208-230/460/3/60, 215 TCZ	66-1353 A - - - -	- 66-1354 A - -	- - 66-1355 A -	- - - 66-1356 A -	- - - - 66-1357 A <sup>2</sup>
21	Mechanical seal washer (1 req'd)	11-0607				

<sup>1</sup> Recommended Spare Parts

<sup>2</sup> Pumps manufactured before 1-98 may have larger pump shaft. Specify diameter of thread when ordering.

NOTE: The part number of the Repair Pac is obtained by adding 'RP' as a suffix to the price code number of the pump only (i.e., less motor). The Repair Pac for the pump shown in the example on Page 3 of Bulletin P-202 is P-47-1617 RP.

# SERIES 'H' HORIZONTAL PUMP DOUBLE MECHANICAL SEAL



ITEM	DESCRIPTION	PART NUMBER				
		H3 x 2 x 5½	H3 x 2 x 6¼	H3 x 2 x 7½	H4 x 3 x 8	H4 x 3 x 9
1	Suction casing - CPVC	44-6255 A		44-6255	43-0758	43-0920
2¹	Impeller assembly - CPVC	44-7368	44-7440	44-7441	44-7390	44-7533
3	Support casing - CPVC	44-6268			44-7393	44-7538
4	Motor connection bracket	44-6244 1				
5	Adapter plate	44-6249				
6¹	Double mechanical seal, L(M1 x M1) EPDM/EPDM, carbon, 304 SS, ceramic V(M2 x M1) Viton/EPDM, carbon, 304 SS, ceramic V(M3 x M1) Viton/EPDM, carbon, 304 SS, fluoride resistant ceramic L(M8 x M1) EPDM/EPDM, silicon carbide, 304 SS V(M8 x M1) Viton/EPDM, silicon carbide, 304 SS	55-0489 55-0488 55-0493 55-0517 55-0470				
7A	Mechanical seal backplate	44-6250				
8	Shaft - stainless steel	44-7439			44-7394²	
9	Casing bolt, 3/8"-16 - stainless steel (8 req'd)	11-2064			11-2149	
10	Washer, 3/8" - stainless steel (16 req'd)	11-0126				
11	Lock washer, 3/8" - stainless steel (18 req'd)	11-0140				
12	Nut, 3/8"-16 - stainless steel (8 req'd)	11-0105				
13	Hex head bolt, 3/8"-16 - stainless steel (10 req'd)	11-0375				
14	Flat head bolt, 1/2"-13 - stainless steel (4 req'd)	11-0407				
15¹	"O"-ring - EPDM - Viton	22-0768 22-0769		22-0773 22-0774	22-0768 22-0769	
16	Motor, 10 HP, 3450 RPM 208-230/460/3/60, 215 TCZ	66-1353 A	-	-	-	-
	15 HP, 3450 RPM 208-230/460/3/60, 215 TCZ	-	66-1354 A	-	-	-
	5.0 HP, 1725 RPM 208-230/460/3/60, 184 TCZ	-	-	66-1355 A	-	-
	7.5 HP, 1725 RPM 208-230/460/3/60, 213 TCZ	-	-	-	66-1356 A	-
	10 HP, 1725 RPM 208-230/460/3/60, 215 TCZ	-	-	-	-	66-1357 A²
17	Hex head bolt, 5/16"-18 - stainless steel (4 req'd)	11-0313				
18	Flat washer, 5/16" - stainless steel (4 req'd)	11-0122				
19	Lock washer, 5/16" - stainless steel (4 req'd)	11-0205				
20¹	EPDM "O"-ring	22-0567				

¹ Recommended Spare Parts

² Pumps manufactured before 1-98 may have larger pump shaft. Specify diameter of thread when ordering.

NOTE: For Repair Pac, see note on bottom of page 1.