



SERIES 'BSS' STAINLESS STEEL CENTRIFUGAL PUMP

MODELS
BSS 1 x 1/2
BSS 1 1/4 x 1
BSS 2 x 1 1/2

Refer to Bulletin P-101 and
Parts List P-9300.

SAFETY PRECAUTIONS BEFORE STARTING PUMP

1. Read operating instructions and instructions supplied with chemical or solvent to be used.
2. Refer to a chemical resistant data chart for compatibility of materials in pump with solution to be used.
3. Note temperature and pressure limitations.
4. Personnel operating pump should always wear suitable protective clothing: face mask or goggles, apron and gloves.
5. All piping must be supported and aligned independently of the pump.
6. Always close valves slowly to avoid hydraulic shock.
7. Ensure that all fittings and connections are properly tightened.

BEFORE CHANGING APPLICATION OR PERFORMING MAINTENANCE

1. Wear protective clothing as described in item 4 above.
2. Flush pump thoroughly with a neutralizing solution to prevent possible harm to personnel.
3. Verify compatibility of materials as stated in Item 2 above.
4. Shut off power to motor at disconnect switch.

IMPORTANT

1. The pump is constructed of type 304 stainless steel including all fasteners.
2. Record all model and serial numbers for future reference. Always specify model and serial numbers when ordering repair parts.
3. Pump flow curves are based on pumping water. Increased horsepower may be necessary when pumping other liquids with a higher specific gravity.
4. Pump inlet piping should be the same size or larger than pump suction. Do not use smaller pipe or hose size as this may cause cavitation and possible pump damage. Piping should be one to two sizes larger for long suction lines when operating near vaporization temperature and

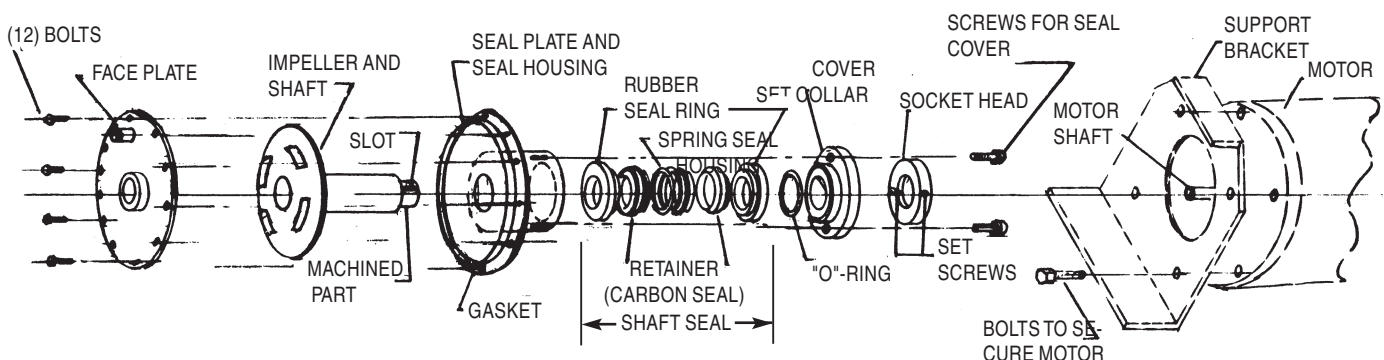
- low atmospheric pressure (high elevation).
5. Review parts List P-9300 and maintain an emergency inventory of replacement parts to assure that pump is returned to service with the least delay.
6. This pump can be run dry without damage because the Viton mechanical seals are enclosed in an oil sealed chamber.
7. For low boiling solvents, pump should be kept away from heat source. (Example: steam lines, exhaust systems). Close proximity may cause pump cavitation.

PRE-START-UP

1. Connect electrical supply to motor starter. If starter is furnished, verify that starter and motor are wired for the correct operating voltage and correct overload heaters. It is recommended for motor protection that a motor starter be installed if one was not provided with the pump assembly.
2. Wire for counterclockwise direction when facing the pump suction.

START-UP

1. If pump is installed with a suction head (liquid above pump), priming is not necessary. It is only necessary to make sure that liquid is in the suction line and pump housing.
2. If pump is installed without a suction head, priming is necessary. It is absolutely necessary that the suction line and pump be completely filled with liquid. Liquid for priming can be introduced through the discharge line. If hose connected, liquid for priming can be introduced through the discharge line. Be sure that air is not trapped in the hose. If a valve is used on the discharge line, keep it closed until motor has been run momentarily, then slowly open valve.
3. Be sure that mechanical seal chamber is filled with Shell Donax T-6 oil or equivalent automatic transmission oil until oil is at bottom of filter tube. Do not overfill.



SERFILCO, LTD.

2900 MacArthur Blvd. 847-509-2900
Northbrook, IL 60062-2005 U.S.A. 800-323-5431
e-mail: sales@serfilco.com FAX: 847-559-1995
www.serfilco.com