

REFILLABLE BULK RESIN MINI-CANISTERS

MODELS

See Bulletin R-102

SF-4ABS, 6ABS, 10ABS, 20ABS and 30 ABS

SERFILCO resin mini-canisters are refillable and designed for removing dissolved ions from plating baths, wastewater and other process chemicals. The canisters are 4", 6", 10", 20" and 30" long, constructed of ABS plastic with a Mylar screen on both ends and a screw closure on one end. The mini-canister is designed for exclusive use in single column chambers or in combination with SERFILCO depth tubes in multiple column chambers. Flow direction is from the top down, i.e. along the longitudinal axis of the canister.

The quality of solution is based on the type of resin used, and other factors such as type of solution, temperature, degree of impurities in solution and solution contact time (flow rate). A longer contact time between solution and resin requires a lower flow rate. System performance should be established to determine an optimum, adsorbency vs. flow rate relationship. Maximum temperature of solution should be 150°F.

START-UP

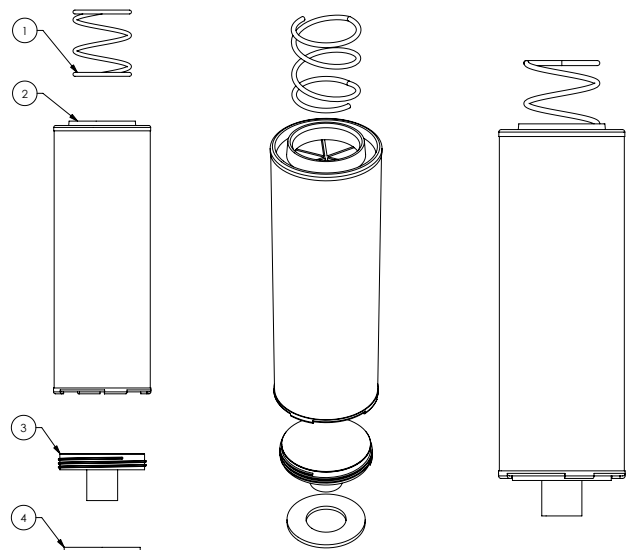
1. Adjust flow control valve if supplied to establish flow rates as listed below.
2. Resin requires replacement when it no longer has its adsorbency property. A reduction in flow rate indicates solids contamination and cartridge filtration is required.
3. Vent air from chamber after start-up.

CAPACITIES

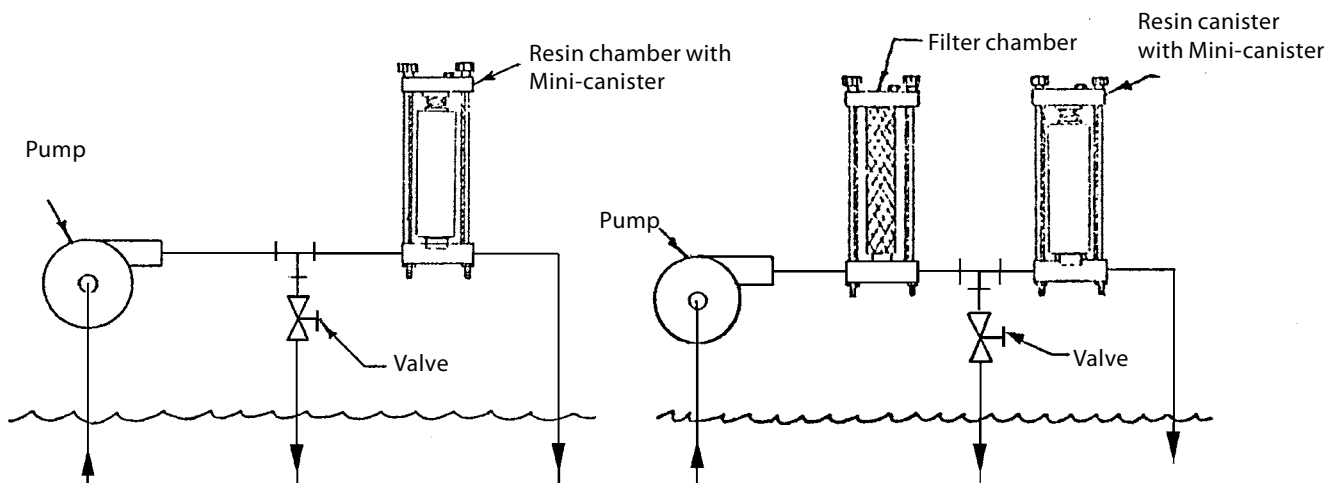
Chamber Model	Flow Range GPM	Resin Cu. Ft.
CPCL10RC-¾	0.125 - 0.41	.05
CPCL20RC-¾	0.25 - 0.83	.10
CPCL30RC-¾	0.5 - 1.66	.15

SERVICE (Replace Resin)

1. Drain all solution from chamber. Remove the four knobs at the top and cover. Lift resin canister out of the chamber.
2. Remove the threaded outlet cap by turning counter clockwise. Dump the spent resin, clean and refill with fresh resin. Tap the sides of the shell so that the resin settles and the resin level is below the threads of the outlet. Re-install outlet cap.
3. Align rubber washer at outlet in base. Put canister into shell with spring at top. Place cover and tighten knobs evenly.



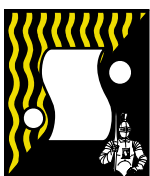
NO.	QTY	PART NO.	TITLE, DESCRIPTION	MATERIAL	SIZE
1	1	77-0301-1	SPRING, HOLD DOWN	SS	
2	1	99-2193	CANISTER, 'L' SERIES RESIN/CARBON 10" LNG.	ABS	
3	1	99-0272-1	CAP, 'L' SERIES RESIN/CARBON ASSEMBLY	ABS	
4	1	22-0204	SPACER, TUBE	VITON	



F.O.B. Northbrook, Illinois

Terms: Net 30 Days

Minimum order: \$50.00



SERFILCO[®], LTD.

2900 MacArthur Blvd. 847-509-2900
 Northbrook, IL 60062-2005 U.S.A. 800-323-5431
 e-mail: sales@serfilco.com FAX: 847-559-1995
 www.serfilco.com