



SERFILCO®

Chemical resistant pumps & filters engineered for industry

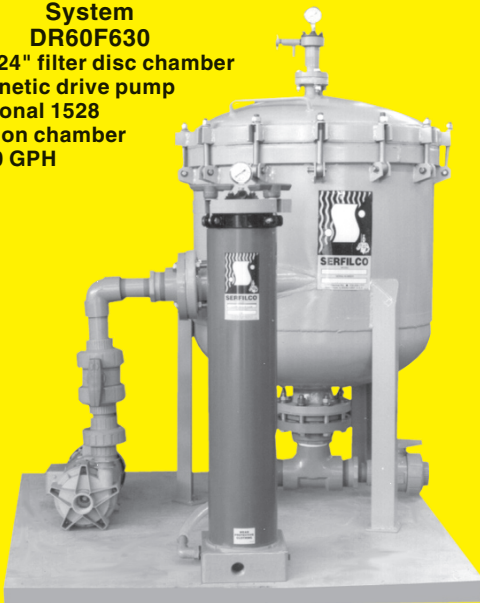
BULLETIN
F-402_A
10/28/2020
Page 1 of 4

SENTRY® DISC | FILTRATION SYSTEMS

OFFERING THE FINEST IN PARTICLE RETENTION

System DR60F630

- 20 - 24" filter disc chamber
- Magnetic drive pump
- Optional 1528 carbon chamber
- 7200 GPH



System DR105HE575

- 35 - 24" filter disc chamber
- Mechanical seal pump
- Optional 3548 carbon chamber
- Optional SV3-60 slurry tank
- 9600 GPH



**ELECTROPLATING / CHEMICAL / FOOD
PETROCHEMICAL / WATER TREATMENT
PHARMACEUTICAL / PHOTOGRAPHIC**

- **Lined steel chambers**
with magnetic-coupled polypropylene pumps
or CPVC (Corzan™) mechanical seal pumps
(See *Chemical Resistance Chart*)
- **Horizontal disc filtration**
- **Flow rates:** 7,200 to 19,000 GPH @ 60 Hz
(27,250 to 72,000 LPH @ 50 Hz)
- **Solids loading area:** 60, 78, 105 sq. ft.
(5.6, 7.2, 9.7 sq. m)
- **Disc filter media:** 5, 10, 20, 40 micron

OPTIONAL —

Slurry tank with 3 additional flow control valves
for pump priming, precoating and . . .

Carbon purification chamber for organic removal

These new style disc filtration systems include design features gained through more than 35 years of experience in developing our chemically resistant pumps and filter chambers. High flow rates to quickly remove particles, together with large surface area for solids loading are combined to provide extended operating life. Choice of disc media density to best serve the application. Optional carbon chamber and slurry tank to expand use of the system for years to come.

These disc filtration systems are engineered to provide efficient removal of particulate or organic impurities from a wide range of chemical and plating solutions to 160°F. Chambers and pumps feature non-metallic solution contact. All external steel surfaces are painted two-part epoxy gray enamel. Rugged support plates are polypropylene and will not warp. All other internals are CPVC.

The following pages contain a representative sampling of available standard systems.

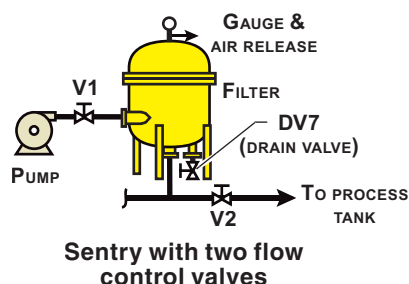
SENTRY DISC FILTRATION SYSTEMS with seal-less magnetic drive pumps

Standard SENTRY DISC systems include:

- Stationary steel mounting base coated with corrosion resistant 2-part epoxy paint.
- Motors are 230-460V/3/50-60, TEFC, 1725 or 3450 RPM. Systems wired for 230V/3/60 unless otherwise specified.
- Piping is solvent sealed CPVC, with EPDM "O"-rings

- at threaded connections.
- 0-60 PSI gauge with Hypalon® diaphragm guard.
- Two flow control valves — one between pump and filter, second at filter discharge.
- Ball valves are solvent sealed CPVC, with Viton® "O"-rings at filter inlet and outlet.
- Capped tee on filter inlet and outlet for drains or field installation of bulk carbon.

TYPICAL PIPING DIAGRAM FOR STANDARD SENTRY DISC SYSTEM



RUBBER LINED CHAMBER with POLYPROPYLENE PUMP

Pump includes fluoride-resistant ceramic spindle with Viton® elastomer.

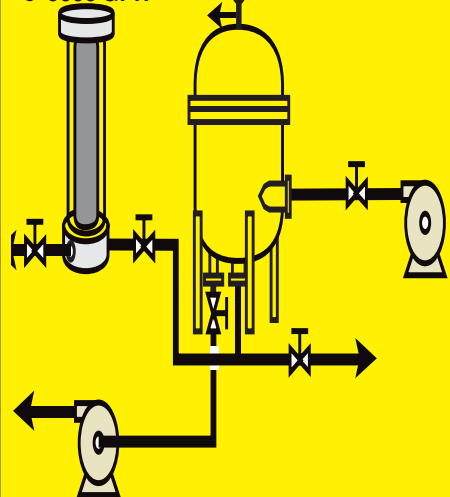
SYSTEM	NUMBER FLOW RATE	MAX. PUMP PSI	GPH @ 60Hz NO.	OF DISCS SOLIDS	AREA Sq. ft. PUMP,	H.P., CHAM- BER	SUCT./ DISCH. CONN.	DIMS. L x W x H
DR60F630	7200	30	20	60	F, 3, DR	2"	48 x 48 x 64	1300
DR78F630	7200	30	26	78			48 x 48 x 72	1400
DR105F630	7200	30	35	105			48 x 48 x 87	1600

SYSTEM	NUMBER FLOW RATE	MAX. PUMP PSI	GPH @ 60Hz NO.	OF DISCS SOLIDS	AREA Sq. ft. PUMP,	H.P., CHAM- BER	SUCT./ DISCH. CONN.	DIMS. L x W x H
DR60F850	9600	45	20	60	F, 5, DR	2"	48 x 48 x 64	1325
DR78F850	9600	45	26	78			48 x 48 x 72	1425
DR105F850	9600	45	35	105			48 x 48 x 87	1625

SYSTEM	NUMBER FLOW RATE	MAX. PUMP PSI	GPH @ 60Hz NO.	OF DISCS SOLIDS	AREA Sq. ft. PUMP,	H.P., CHAM- BER	SUCT./ DISCH. CONN.	DIMS. L x W x H
DR60F975	12000	55	20	60	F, 7.5, DR	3"	48 x 48 x 64	1365
DR78F975	12000	55	26	78			48 x 48 x 72	1465
DR105F975	12000	55	35	105			48 x 48 x 87	1665

System DR105F850

- 35 - 24" filter disc chamber
- Magnetic drive pump
- Optional 3528 carbon chamber
- Optional SV3-60 slurry tank
- 9600 GPH



Available for all models, independent of pump style:

Granular carbon purification chamber installed on filter discharge with flow control valve is an available option. This allows filtered solution to pass through the activated carbon on a convenient "ON-OFF" basis before returning to the process tank. In addition to pump priming and chemical mixing, optional slurry tank with three additional valves allows precoating of disc media with filter aid and/or carbon.

SENTRY DISC FILTRATION SYSTEMS with single or double mechanical seal pumps *

RUBBER LINED CHAMBER with CPVC PUMP

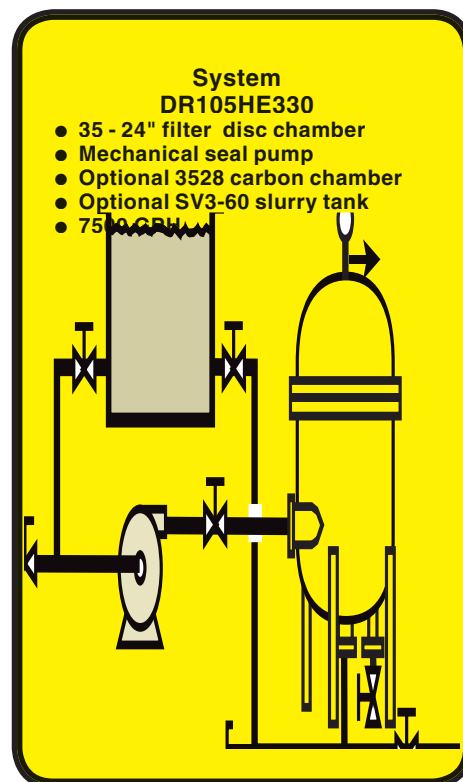
Pump includes carbon-ceramic mechanical seal with Viton elastomers.

SYSTEM	NUMBER FLOW RATE	MAX. PUMP PSI	GPH @ 60Hz NO.	OF DISCS SOLIDS	AREA Sq. ft. PUMP,	H.P., CHAM- BER	SUCT./ DISCH. CONN.	DIMS. L x W x H
DR60HE330	7500	36	20	60	HE, 3, DR	2"	48 x 48 x 64	1300
DR78HE330	7500	36	26	78			48 x 48 x 72	1400
DR105HE330	7500	36	35	105			48 x 48 x 87	1600

SYSTEM	NUMBER FLOW RATE	MAX. PUMP PSI	GPH @ 60Hz NO.	OF DISCS SOLIDS	AREA Sq. ft. PUMP,	H.P., CHAM- BER	SUCT./ DISCH. CONN.	DIMS. L x W x H
DR60HE450	8500	50	20	60	HE, 5, DR	2"	48 x 48 x 64	1325
DR78HE450	8500	50	26	78			48 x 48 x 72	1425
DR105HE450	8500	50	35	105			48 x 48 x 87	1625

SYSTEM	NUMBER FLOW RATE	MAX. PUMP PSI	GPH @ 60Hz NO.	OF DISCS SOLIDS	AREA Sq. ft. PUMP,	H.P., CHAM- BER	SUCT./ DISCH. CONN.	DIMS. L x W x H
DR60HE575	9600	60	20	60	HE, 7.5, DR	2"	48 x 48 x 64	1365
DR78HE575	9600	60	26	78			48 x 48 x 72	1465
DR105HE575	9600	60	35	105			48 x 48 x 87	1665

SYSTEM	NUMBER FLOW RATE	MAX. PUMP PSI	GPH @ 60Hz NO.	OF DISCS SOLIDS	AREA Sq. ft. PUMP,	H.P., CHAM- BER	SUCT./ DISCH. CONN.	DIMS. L x W x H
DR78H875	15000	27	26	78	H, 7.5, DR	3"	48 x 48 x 72	1475
DR105H875	15000	27	35	105			48 x 48 x 87	1675
DR105H510	19000	50	35	105	H, 10, DR		48 x 48 x 87	1750



IMPORTANT:

* To order pump with double mechanical seal

- Change **HE** to **HED** or **H** to **HD** in

DISC MEDIA

FILTER DISCS, CELLULOSE

Packaged in carton of 250

CODE NO.	DISC MODEL MICRON RAT-	ING PRICE
CE40x24		78-1420
CE5x24	5	78-1421
CE10x24	10	78-1422
CE20x24	20	78-1423

40

DR78 chamber with cover removed. Chamber is filled with 26-24" filter discs (78 sq. ft. solids area).



SENTRY DISC FILTRATION SYSTEMS (cont'd.)

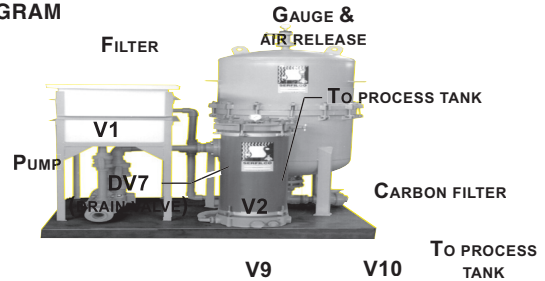
OPTIONAL

DESCRIPTION	PRICE CODE NO.
MOTOR STARTERS - NEMA 4X Watertight push button	
230 - 460V/3/50-60 (3 - 7.5 H.P.) 230 - 460V/3/50-60 (10 - 15 H.P.)	O-MS3P O-MS3P-S
NOTE: O-MS3P-S is required for any size system ordered with a DRI-STOP® Pump Protector.	
DRI-STOP® PUMP PROTECTOR	
DRI-STOP 2R for use with double mechanical seal pumps. DRI-STOP 3 for use with magnetic drive or single	O-2DS2R
DAVIT COVER LIFT	
For Model: DR78 DR105	78-1603 78-1604
MECHANICAL SEALS for H & HE PUMPS	
M1 EPDM / ceramic (caustic)	O-M1
M3 Viton / silica-free ceramic (fluorides)	O-00M3
M8 Viton / silicon carbide (abrasives)	O-00M8
M1xM1 EPDM / ceramic (double seal)	O-M1M1
M3xM1 Viton / silica-free ceramic (double seal)	O-M3M1
M8xM1 Viton / silicon carbide (double seal)	O-M8M1

DESCRIPTION	PRICE CODE NO.
CARBON PURIFICATION CHAMBER Order carbon media from Bulletin M-305.	
Includes adapter kit, flow control valve, drain valve and 10 ft. of nylon reinforced vinyl hose, PVC chamber and internal canister(s) for use with granular carbon.	
Single 5" x 28" canister, 7.5 lbs. capacity	O-1528
Triple 5" x 28" canister, 22.5 lbs. capacity	O-3528
Triple 5" x 48" canister, 42 lbs capacity	O-3548
Chamber for single 5" x 28" Maxi-carb cartridge (3.0 lbs. carbon)	
Polypropylene	O-PP1528M
CPVC	O-1528M

SENTRY with CARBON PURIFICATION CHAMBER

PIPING DIAGRAM



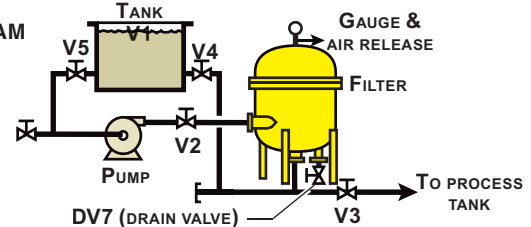
SLURRY TANK and VALVES

For chemical mixing, pump priming or precoating. Includes polyethylene tank, three additional CPVC flow control valves, steel frame. Completely piped and assembled with filter and pump on a standard base.
30 gal. slurry w/3 add'l valves
60 gal. slurry w/3 add'l valves

MODEL	PRICE CODE NO.
SV3-30	O-SV3-30
SV3-60	O-SV3-60

SENTRY with SV3 SLURRY TANK

PIPING DIAGRAM



PUMP DRAINING KIT

Includes magnetic-coupled pump & motor unit (Model APS3000A), with 8 ft. electric cord, 10 ft. 5/8" clear vinyl hose, 2 clamps, 1/2" CPVC ball valve. Installed.

MODEL	PRICE CODE NO.
-PDK	O-2267

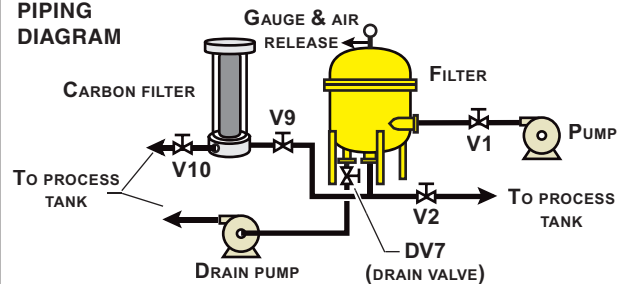
CARTRIDGE CONVERSION KIT

Order cartridges from Bulletin M-109.

FOR MODEL	NO. OF CARTRIDGES	
DR60	120 of 10" or 60 of 20"	78-1397
DR78	180 of 10" or 60 of 30"	78-1398
DR105	240 of 10" or 120 of 20"	78-1399

SENTRY with PUMP DRAIN KIT

PIPING DIAGRAM



F.O.B. Northbrook, Illinois

Specifications subject to change without notice.

Registered trademarks:
Hypalon, Viton - DuPont Dow Elastomers; Corzan - B.F. Goodrich Co.

DISTRIBUTED BY



SERFILCO®

1777 Shermer Road 847-559-1777
Northbrook, IL 60062-5360 U.S.A. 800-323-5431
Email: sales@serfilco.com FAX: 847-559-1995
Web: http://www.serfilco.com