

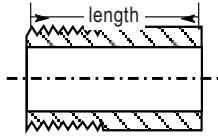


SERFILCO® FITTINGS TO ADAPT TO NPT TO METRIC SOCKET

2900 MacArthur Blvd. Northbrook, IL. USA 60062 www.serfilco.com (800) 323 - 5431

BULLETIN
A-210_A
MAY 2011

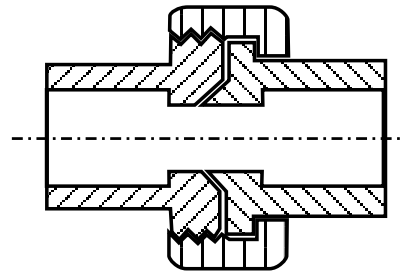
CPVC NIPPLE (Threaded one end)



___ " NPT x ___ " socket
For connecting NPT chamber to socket union

NIPPLE CONVERSION SIZE	LENGTH	PRICE CODE NO.
½" NPT x .84" O.D.	1-7/8"	33-8055
¾" NPT x 1.05" O.D.	2-7/16"	33-8056
1" NPT x 1.31" O.D.	2-9/16"	33-8057
1½" NPT x 1.90" O.D.	3-3/16"	33-8058
2" NPT x 2.37" O.D.	3-1/4"	33-8059

PVC UNION



___ " socket x ___ mm socket

UNION CONVERSION SIZE	PRICE CODE NO.
.84" O.D. x 20 mm	78-0088
1.05" O.D. x 25 mm	78-0089
1.31" O.D. x 32 mm	78-0090
1.90" O.D. x 50 mm	78-0091
2.37" O.D. x 63 mm	78-0092

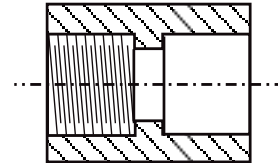
CPVC SHORT NIPPLE



___ " NPT x ___ " NPT
For connecting NPT chamber to
NPT coupling or NPT flange

NIPPLE SIZE	PRICE CODE NO.
½" NPT x ½" NPT	33-0198
¾" NPT x ¾" NPT	33-1006
1" NPT x 1" NPT	33-1012
1½" NPT x 1½" NPT	33-1024
2" NPT x 2" NPT	33-1030

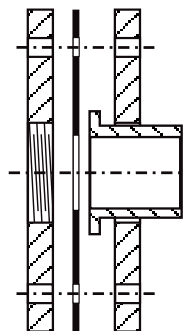
PVC COUPLING



___ " NPT x ___ mm socket

COUPLING CONVERSION SIZE	PRICE CODE NO.
½" NPT x 20 mm	78-0098
¾" NPT x 25 mm	42-0212
1" NPT x 32 mm	42-0213
1½" NPT x 50 mm	42-0214
2" NPT x 63 mm	42-0215

CPVC / PVC FLANGE ASSEMBLY w/EPDM GASKET



___ " NPT flange x ___ mm
socket and flange

FLANGE CONVERSION SIZE	PRICE CODE NO.
½" NPT x 20 mm	47-0093
¾" NPT x 25 mm	47-0094
1" NPT x 32 mm	47-0095
1½" NPT x 50 mm	47-0096
2" NPT x 63 mm	47-0097