

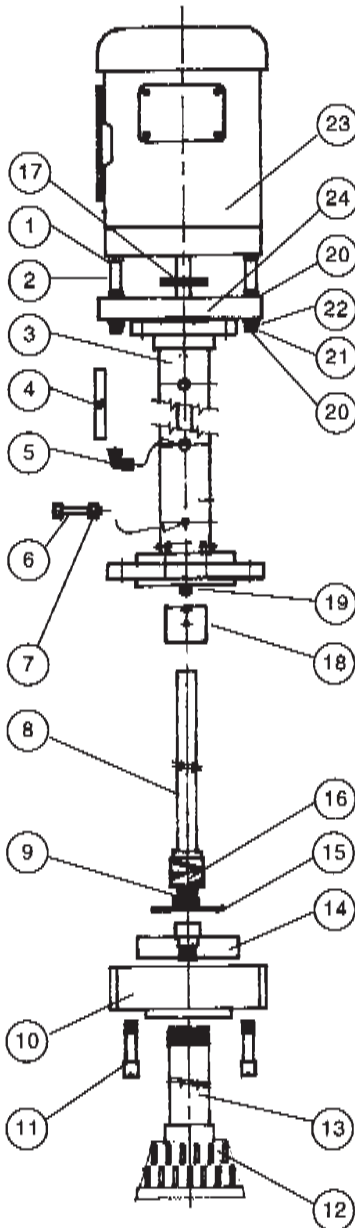


SERIES 'B' VERTICAL PUMPS

PARTS LIST
P-3125F
OCT. 1998

Refer to Bulletin P-303, Operation and Service Guide O-310 and Master Price List F-800.
Please give serial number and nameplate data when ordering parts.

SINGLE BEARING PUMPS



Registered trademarks:
Hastelloy - Haynes, International;
Viton - DuPont Dow Elastomers;
Rulon - Dixon

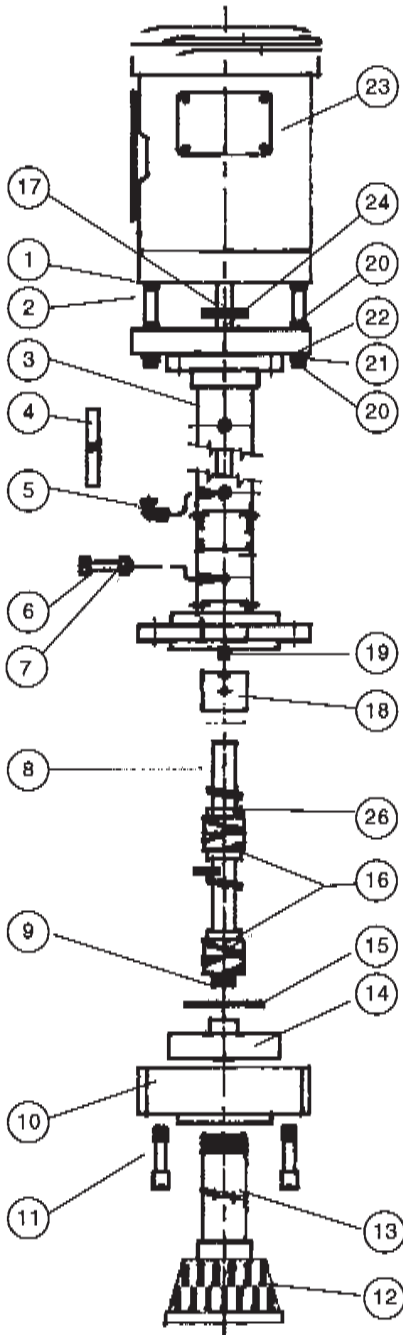
ITEM	DESCRIPTION	MODELS		
		B1½ x 1SCEY	B1½ x 2SCEY	B1½ x 3SCEY
PART NUMBERS				
1	Hex nut, stn. steel, 3/8"-16 (8 req'd)	11-0105		
2	Stud, stn. steel, 3/8"-16 x 5½" long	11-0160		
3	Column assembly (Standard) (Includes Items 6, 7, 18)			
	2 foot	44-2518	44-2345	44-6577
	3 foot	44-6531	44-6532	44-6533
	4 foot	44-6534	44-6535	44-6536
4	Bleed tubing, (per foot)	44-1612		
5	Bleed line elbow, polypropylene	44-1605		
6	Hex bolt, ¼"-20 (2 required) - Titanium ¾" long - Hastelloy®C 1" long	33-0044 11-0459		
7	Locknut, ¼"-20 (2 required) - Titanium - Hastelloy C	11-0334 11-0458		
8 ²	Drive shaft sleeve - CPVC (Standard)			
	2 foot	44-1014		44-1014 3
	3 foot	44-2402		44-2402 3
	4 foot	44-2320		44-2320 3
9 ¹	"O"-ring - EPDM - Viton (optional)	22-0605 22-0604		
10	Suction casing, CPVC	44-2425	44-2263 1	44-3115
11	Casing bolt, CPVC	44-1616		44-3118
12	Suction strainer, polyethylene	99-0745		
13	Extension nipple (optional) for K12 for K24 for K36	33-1444 33-1537 33-1538		
14 ^{1,3}	Impeller, semi-enclosed - CPVC	44-2210 A	44-1622 A	44-3116 A
15 ¹	"O"-ring - EPDM (Standard) - Viton®	44-1619 22-0443		
16 ¹	Ring, helix groove LH (2 req'd.) - Carbon graphite - Rulon® (Glass filled TFE)	44-1973 44-1975		
16A ¹	Bearing spacer - CPVC (1 req'd)	44-1977		
17 ¹	Slinger washer - EPDM	55-0140		
18 ¹	Casing liner - ceramic	44-1979		
19	Drive shaft - stainless steel			
	2 foot	44-0818		
	3 foot	44-6528		
	4 foot	44-2319		
20	Locknut, stainless steel, 3/8"-16	11-0519		
21	Flat washer, stainless steel, 3/8" size	11-0126		
22	Lockwasher, stainless steel, 3/8" size	11-0140		
23	Motor, TEFC, 230/460/3/50-60, 1725 RPM	1½ HP - 66-1032 2 HP - 66-0924 3 HP - 66-0486 5 HP - 66-1195		
	<i>SELECT MOTOR AS NEEDED</i>			
24	Vapor seal - TFE For pump equipped w/same	55-0567		
25	Discharge elbow assembly - CPVC (Not shown)	44-7382	44-7383	
26	Mounting plate, 24" square - PVC (optional, not shown)	43-0927		

¹ Recommended spare parts.

² Pumps manufactured after September, 1990 have left hand threads on adapter. Please consult Application Engineering Department if right-hand thread adapter is required.

³ Impellers with right-hand thread shaft-sleeve couplings (for pumps manufactured before October, 1990) are no longer available. Therefore, a new corresponding shaft-sleeve (left-hand thread) is also required.

DOUBLE BEARING PUMPS



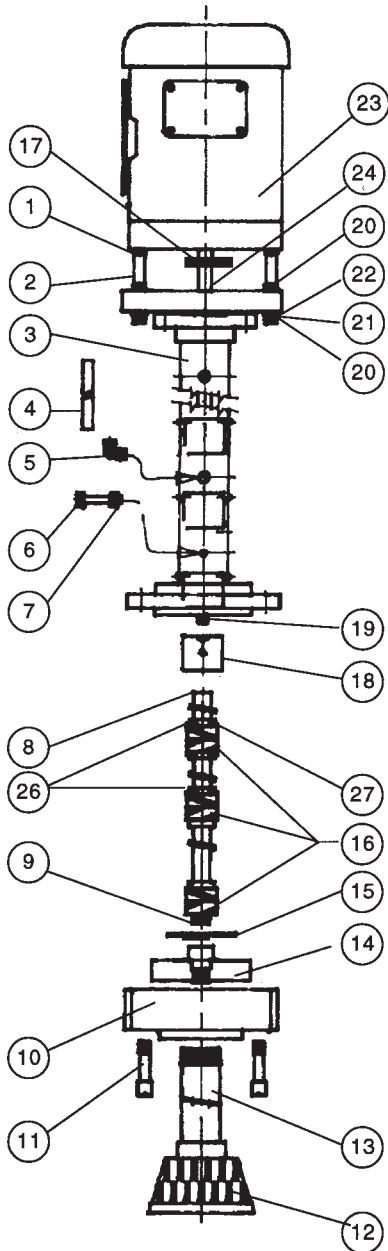
ITEM	DESCRIPTION	MODELS		
		B1½ x 1SCEY	B1½ x 2SCEY	B1½ x 3SCEY
		PART NUMBERS		
1	Hex nuts, 3/8"-16 - stn. steel, (8 req'd)	11-0105		
2	Stud, 3/8"-16 x 5½" long - stn. steel	11-0160		
3	Column assembly (Standard) Includes Items 6,7, & 18 5 foot 6 foot 7 foot 8 foot	44-6537 44-6540 44-6543 44-6546	44-6538 44-6541 44-6544 44-6547	44-6539 44-6542 44-6545 44-6548
4	Bleed tubing, (per foot)	44-1612		
5	Bleed line elbow - polypropylene	44-1605		
6	Hex bolt, ¼"-20-Titanium 1" long (1 req'd) - Titanium ¾" long (4 req'd) - Hastelloy C 1" long (5 req'd)	11-0335 33-0044 11-0459		
7	Locknut, ¼"-20 (5 required) - Titanium - Hastelloy C	11-0334 11-0458		
8 ²	Drive shaft sleeve - CPVC (Standard) Includes Item 26 5 foot 6 foot 7 foot 8 foot	44-2420 44-2436 44-2289 44-2417	44-2420 3 44-2436 3 44-2289 3 44-2417 3	
9 ¹	'O'-ring -EPDM - Viton (optional)	22-0605 22-0604		
10	Suction casing - CPVC	44-2425	44-2263 1	44-3115
11	Casing bolt - CPVC	44-1616		44-3118
12	Suction strainer - polyethylene	99-0745		
13	Extension nipple (optional) for K12 for K24 for K36	33-1444 33-1537 33-1538		
14 ^{1, 3}	Impeller, semi-enclosed - CPVC	44-2210 A	44-1622 A	44-3116 A
15 ¹	"O"-ring - EPDM (Standard) - Viton	44-1619 22-0443		
16 ¹	Ring, helix groove LH (4 req'd.) - Carbon graphite - Rulon (Glass filled TFE)	44-1973 44-1975		
16A ¹	Bearing spacer - CPVC (2 req'd)	44-1977		
17 ¹	Slinger washer - EPDM	55-0140		
18 ¹	Casing liner - ceramic	44-1979		
19	Drive shaft - stainless steel 5 foot 6 foot 7 foot 8 foot	44-2421 44-2435 44-2288 44-1692		
20	Locknut, 3/8"-16 - stainless steel	11-0519		
21	Flat washer, 3/8" size - stn. steel	11-0126		
22	Lockwasher, 3/8" size - stn. steel	11-0140		
23	Motor, TEFC, 230/460/3/50-60, 1725 RPM <i>SELECT MOTOR AS NEEDED</i>	1½ HP - 66-1032 2 HP - 66-0924 3 HP - 66-0486 5 HP - 66-1195		
24	Vapor seal - TFE (For pumps equipped w/same)	55-0567		
25	Discharge elbow assembly - CPVC (Not shown)	44-7382	44-7383	
26	Set collar - CPVC Set screw ¼"-20 x ¼" long (4 req'd) - Titanium (standard) - Hastelloy C	44-1621	11-0476 11-0681	
27	Mounting plate, 24" square - PVC (optional)	43-0927		

¹ Recommended spare parts.

² Pumps manufactured after September, 1990 have left hand threads on adaptor. Please consult Application Engineering Department if right-hand thread adaptor is required.

³ Impellers with right-hand thread shaft-sleeve couplings (for pumps manufactured before October, 1990) are no longer available. Therefore a new corresponding shaft-sleeve (left-hand thread) is also required.

TRIPLE BEARING PUMPS



- 1 Recommended spare parts.
- 2 Pumps manufactured after September 1990 have left hand threads on adaptor. Please consult Application Engineering Department if right-hand thread adaptor is required.
- 3 Impellers with right-hand thread shaft-sleeve couplings (for pumps manufactured before October 1990) are no longer available. Therefore a new corresponding shaft-sleeve (left-hand thread) is also required.

ITEM	DESCRIPTION	MODELS		
		B1½ x 1SCEY	B1½ x 2SCEY	B1½ x 3SCEY
PART NUMBERS				
1	Hex nut, stn. steel, 3/8"-16 (8 req'd)	11-0105		
2	Stud, stn. steel, 3/8"-16 x 5½" long	11-0160		
3	Column assembly (Standard) Includes Items 6, 7 and 18			
	9 foot	44-6549	44-6550	44-6551
	10 foot	44-6552	44-6553	44-6554
	11 foot	44-6555	44-6556	44-6557
	12 foot	44-6558	44-6559	44-6560
4	Bleed tubing, (per foot)	44-1612		
5	Bleed line elbow, polypropylene	44-1605		
6	Hex bolt, ¼"-20-Titanium 1" long (2 req'd) - Titanium ¾" long (6 req'd) - Hastelloy C 1" long (8 req'd)	11-0335		
		33-0044		
		11-0459		
7	Locknut, ¼"-20 (8 required) - Titanium - Hastelloy C	11-0334		
		11-0458		
8 ²	Drive shaft sleeve, CPVC (Standard) Includes: 26 & 27			
	9 foot	44-2354	44-2354 3	
	10 foot	44-2583	44-2583 3	
	11 foot	44-6530	44-6530 3	
	12 foot	44-2262	44-2262 3	
9 ¹	'O'-ring - EPDM - Viton (optional)	22-0605		
		22-0604		
10	Suction casing - CPVC	44-2425	44-2263 1	44-3115
11	Casing bolt - CPVC	44-1616		
12	Suction strainer - polyethylene	99-0745		
13	Extension nipple (opt.)	for K12 33-1444		
		for K24 33-1537		
		for K36 33-1538		
14 ^{1,3}	Impeller, semi-enclosed - CPVC	44-2210 A	44-1622 A	44-3116 A
15 ¹	"O"-ring - EPDM (Standard) - Viton	44-1619		
		22-0443		
16 ¹	Ring, helix groove LH (6 req'd.) - Carbon graphite - Rulon (Glass filled TFE)	44-1973		
		44-1975		
16A ¹	Bearing spacer -CPVC (3 req'd)	44-1977		
17 ¹	Slinger washer - EPDM	55-0140		
18 ¹	Casing liner - ceramic	44-1979		
19	Drive shaft - stainless steel			
	9 foot	44-2353		
	10 foot	44-2581		
	11 foot	44-6529		
	12 foot	44-2261		
20	Locknut - stainless steel, 3/8"-16	11-0519		
21	Flat washer - stainless stl., 3/8" size	11-0126		
22	Lockwasher - stainless stl., 3/8" size	11-0140		
23	Motor, TEFC, 230/460/3/50-60, 1725 RPM	1½ HP - 66-1032		
		2 HP - 66-0924		
		3 HP - 66-0486		
		5 HP - 66-1195		
	<i>SELECT MOTOR AS NEEDED</i>			
24	Vapor seal - TFE (For pumps equiped w/same)	55-0567		
25	Discharge elbow assembly - CPVC (not shown)	44-7382	44-7383	
26	Set collar - CPVC (2 req'd) Set screw ¼"-20 x ¼" long (8 req'd) - Titanium (standard) - Hastelloy C	44-1621		
		11-0476		
		11-0681		
27	Bushing - CPVC Set screw, ¼"-20 x ¼" long (4 req'd) - Titanium (standard) - Hastelloy C	44-1013 B		
		11-0476		
		11-0681		
28	Mounting plate, 24" square - PVC (optional)	43-0927		