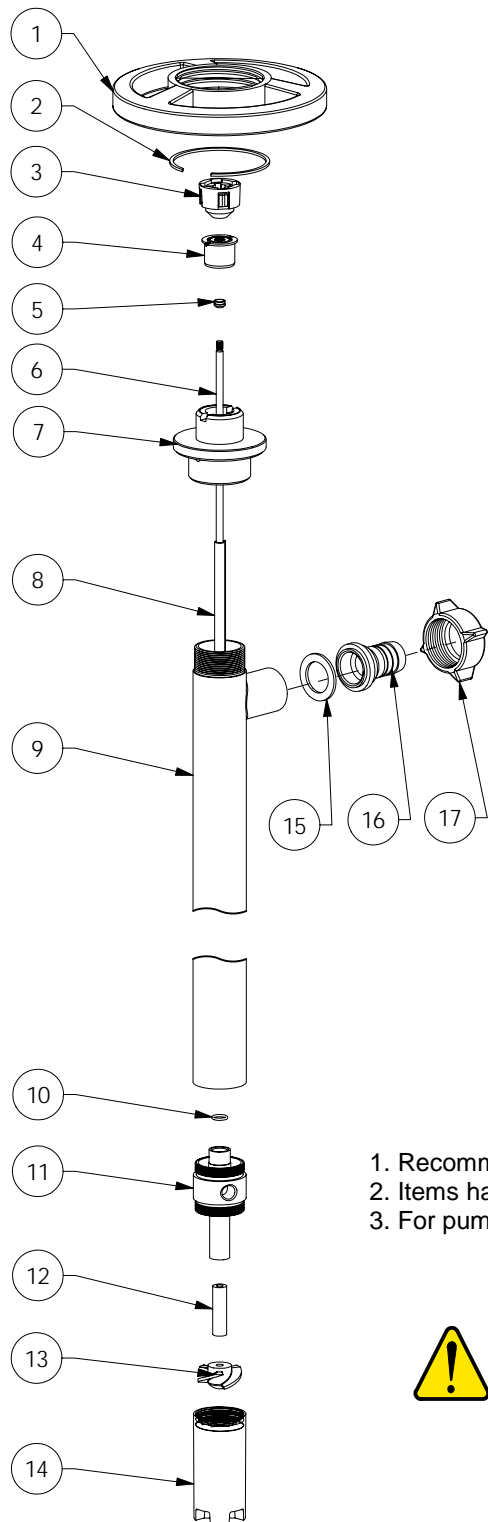


SERIES 'DP' DRUM PUMP STAINLESS STEEL

PARTS LIST
P-1028A (1 of 1)
08/30/05



SIZE	MODEL	PRICE CODE	HIGH HEAD	
			MODEL	PRICE CODE
39"	SS8339-1	52-2000	SS8339-1H	52-2000-H
47"	SS8347-1	52-2001	SS8347-1H	52-2001-H
60"	SS8360-1	52-2002	SS8360-1H	52-2002-H
72"	SS8372-1	52-2003	SS8372-1H	52-2003-H

ITEM	DESCRIPTION	PART NUMBERS	
1	Hand wheel -polypropylene	52-1842	
2	Snap ring- carbon steel	52-1508	
3 ¹	Coupling assembly- nylon	52-1004	
4 ¹	Bearing assembly	52-1038	
5 ¹	V-seal PTFE	52-4029	
6	Drive shaft	-39"	52-2028
		-47"	52-2029
		-60"	52-2709
		-72"	52-2710
7	Outrun Flange -Aluminum	52-2009	
8	PTFE Guide sleeve	-39"	52-2032
		-47"	52-2033
		-60"	52-2711
		-72"	52-2712
9 ^{2,3}	Outer Tube (42mm)	-39"	52-2701-1
		-47"	52-2702-1
		-60"	52-2713-1
		-72"	52-2714-1
10	O-ring (2 per set) -Viton	52-2707	
11 ^{2,3}	Pump housing (42mm)	52-2704-1	
12	Carbon bushing	52-1606 (before 10/97 52-2703)	
13 ²	Rotor		52-2706
		-high head	52-2706-HH
14 ^{2,3}	Pump foot (42mm)		52-2708-1
		-high head	52-2708-1HH
15	Gasket -TFE	52-2195	
16	Hose barb -1"	52-2196	
17	Wing nut	52-2068	

1. Recommended replacement parts.
2. Items have left hand threads.
3. For pumps manufactured prior August 2003 items are 41mm. Remove '-1' from part No.



METAL PUMPS (SS) MUST BE PROPERLY GROUNDED TO PREVENT POSSIBLE EXPLOSION AND/OR FIRE WHEN PUMPING FLAMMABLES

Bulletin	P-402
Operation & Service Guide	O-176
Price List	F-800

F.O.B Northbrook, Illinois

Terms: Net 30 Days

Minimum order \$25.00



SERFILCO, LTD.

2900 MacArthur Blvd.
Northbrook, IL 60062 U.S.A.
Email: Sales@SERFILCO.com
Web: WWW.SERFILCO.COM

(800) 323-5431
(847) 509-2900
Fax: (847) 559-1995