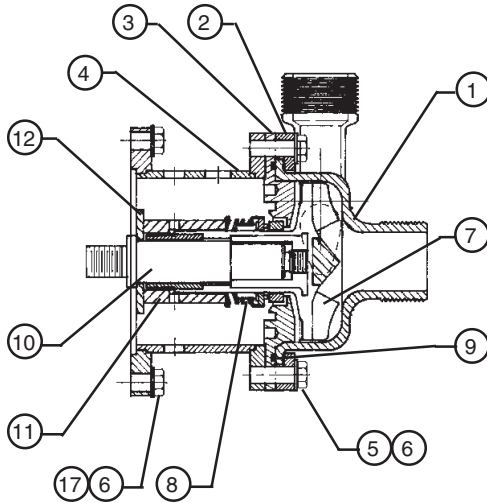


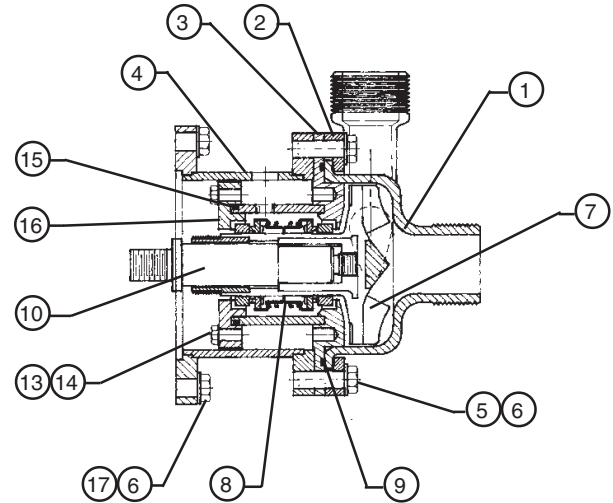
SERIES 'HK' HORIZONTAL PUMP

PARTS LIST
P-990E
FEB. 2001

Refer to Bulletin P-203, Operation and Service Guide O-2505 and Master Price List F-800.



SINGLE MECHANICAL SEAL



DOUBLE MECHANICAL SEAL

ITEM	DESCRIPTION	SINGLE SEAL		DOUBLE SEAL	
		CPVC	PVDF	CPVC	PVDF
		HK1½ x 1½CK	HK1½ x 1½K	HK1½ x 1½CK	HK1½ x 1½K
PART NUMBERS					
1	Suction casing - PVDF	44-4025	44-4025	44-4025	44-4025
2	Mounting ring - CPVC	44-5043	44-5043	44-5043	44-5043
3	Support casing	44-7061	44-7079	44-7062	44-7080
4	Motor connecting bracket - PVC	44-7055	44-7055	44-7055	44-7055
5	Hex bolt, 3/8"-16 x 1¼" long - stn. steel (8 req'd)	11-0372	11-0372	11-0372	11-0372
6	Flat washer, 3/8" size - stn. steel (12 req'd)	11-0126	11-0126	11-0126	11-0126
7*	Impeller assembly, 1.0 HP 1.5 HP	44-7063 44-7054	44-7077 44-7076	44-7063 44-7054	44-7077 44-7076
8*	Mechanical seal - EPDM, carbon ceramic (white dot) - Viton, carbon silica-free ceramic (yellow dot) - Viton, silicon carbide (yellow dot)	(M1) 55-0482 (M2) 55-0481 (M8) 55-0484	(M1) 55-0482 (M2) 55-0481 (M8) 55-0484	(M1 x M1) 55-0489 (M2 x M1) 55-0488 (M8 x M1) 55-0470	(M1 x M1) 55-0489 (M2 x M1) 55-0488 (M8 x M1) 55-0470
9*	"O"-ring - EPDM, standard (white dot) - Viton, optional (yellow dot)	22-0362 22-0322	22-0362 22-0322	22-0362 22-0322	22-0362 22-0322
10	Shaft - stainless steel	44-7057	44-7057	44-7057	44-7057
11	Mechanical seal spacer - PVC	44-7056	44-7056	-	-
12	Flat washer, 1" size - stainless steel	11-0607	11-0607	-	-
13	Hex head bolt, ¼"-20 x 2½" long - stn. steel (4 req'd)	-	-	11-0429	11-0429
14	Flat washer, ¼" size - stainless steel (4 req'd)	-	-	11-0276	11-0276
15*	"O"-ring - EPDM	-	-	22-0348	22-0348
16	Mechanical seal backplate - PVC	-	-	44-7059	44-7059
17	Hex bolt, 3/8"-16 x 1" long - stainless steel (4 req'd)	11-0375	11-0375	11-0375	11-0375
The following items are not illustrated.					
18	Water flush nipple, ¼" NPT x 2" long - CPVC	-	-	33-0189	33-0189
19	Tube fitting, ¼" NPT - polypropylene	-	-	33-1343	33-1343
20	Motor, TEFC, 3450 RPM w/feet 1.0 HP, 115/208-230/1/50-60 1.0 HP, 208-230/460/3/50-60 1.5 HP, 115/208-230/1/50-60 1.5 HP, 208-230/460/3/50-60	66-1197F 66-1022F 66-1034F 66-1021F	66-1197F 66-1022F 66-1034F 66-1021F	66-1197F 66-1022F 66-1034F 66-1021F	66-1197F 66-1022F 66-1034F 66-1021F

* Recommended spare parts.

Repair Pac

These parts will be preassembled, ready for pump installation.

Single Mechanical Seal (Includes items #3, 7, 8, & 11)

Impeller	Mechanical Seal	Repair-Pac No.	Price Code Numbers	
			CPVC	PVDF
3	(M1)	3 - L(M1)	44-7460	44-7468
4		4 - L(M1)	44-7461	44-7469
3	(M2)	3 - V(M2)	44-7462	44-7470
4		4 - V(M2)	44-7463	44-7471
3	(M8)	3 - V(M8)	44-7466	44-7474
4		4 - V(M8)	44-7467	44-7475

Double Mechanical Seal (Includes items #3, 7, 8, 13, 14, 15, 16)

Impeller	Mechanical Seal	Repair-Pac No.	Price Code Numbers	
			CPVC	PVDF
3	(M1x M1)	3 - L(M1)	44-7476	44-7484
4		4 - L(M1)	44-7477	44-7485
3	(M2 x M1)	3 - V(M2)	44-7478	44-7486
4		4 - V(M2)	44-7479	44-7487
3	(M8 x M1)	3 - V(M8)	44-7482	44-7490
4		4 - V(M8)	44-7483	44-7491



SERFILCO[®], LTD.

2900 MacArthur Blvd. 847-509-2900
 Northbrook, IL 60062-2005 U.S.A. 800-323-5431
 e-mail: sales@serfilco.com FAX: 847-559-1995
 www.serfilco.com

WESTERN

13721 Alma Avenue 310-532-0801
 Gardena, CA 90249-2513 FAX: 310-532-0866