

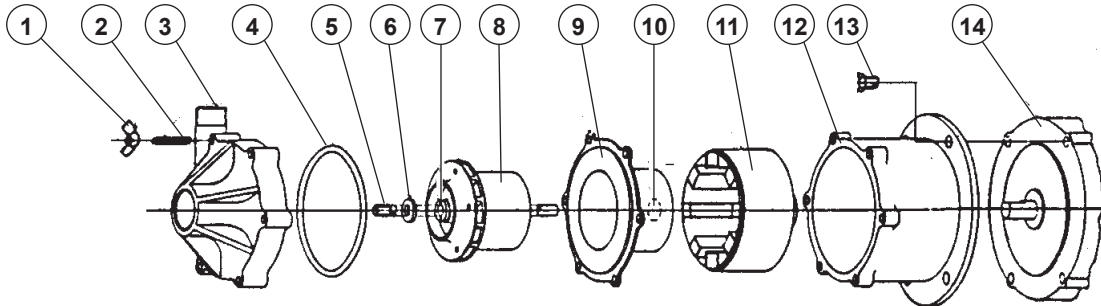


# SERIES 'D' MAGNETIC-COUPLED PUMP & MOTOR

PARTS LIST  
P-0800\_AG  
NOV 2011

MODELS: 1½ x 1 MPGR  
1½ x 1 MSGR  
1½ x 1 MKGC

Refer to Bulletin P-504,  
Operation and Service Guide O-190.



## IMPELLER DIAMETER vs SPECIFIC GRAVITY

Diameter of the impellers supplied on all Series 'D' pumps are designed for use on water-like liquids. Liquid which has a higher specific gravity can be pumped if:

- #1. The outlet flow is restricted so the impeller magnet stays in synchronization with the drive magnet, or
- #2. The restriction from a filter or other head loss is sufficient to keep the impeller magnet in synchronization, or
- #3. The overall diameter of the impeller is reduced according to the following table.

### SPECIFIC GRAVITY

	1.0 to 1.1	1.1 to 1.3	1.3 to 1.5	1.5 to 1.7	1.7 to 1.9	1.9 to 2.0
<b>IMPELLER DIAMETER (inches)</b>						
60 Hz	Std 3-3/4	3-5/8	3-1/2	3-3/8	3-1/4	3-1/8
50 Hz	95.2 mm (3-3/4 in) std.			88.9 mm (3-1/2)		

Add Price Code No. 48-0200 for trimming impeller diameter. Specify impeller part number and diameter.

### BOX "A"

**FOR FILTRATION SYSTEMS WITHOUT  
FLOW CONTROL VALVE**

3-5/8" diameter impeller is standard  
Add . . . . . Part No. 48-0200

Registered trademarks: Ryton - Phillips Chemical,  
Teflon - DuPont  
Viton - DuPont Dow Elastomers.

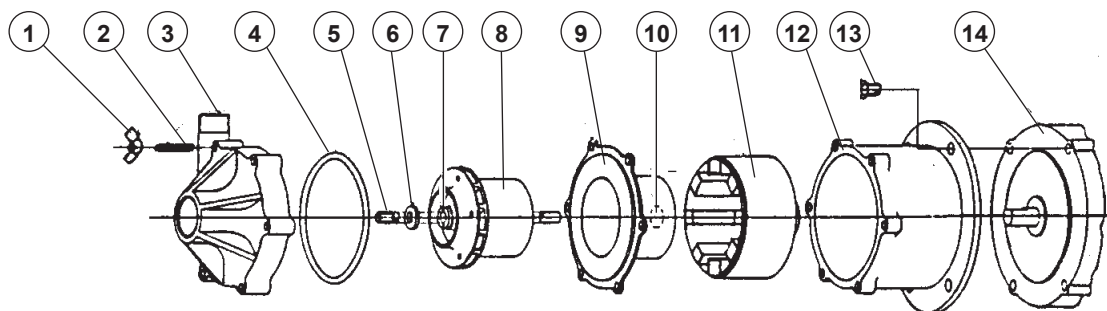
ITEM	DESCRIPTION	MODEL	
		MPGR	MKGC   MSGR
		PART NUMBERS	
1	Wing nuts, 1/4"-20 - stainless steel (6 req'd)	11-0101	
2	Housing studs, 1/2"-20 x 2 1/4" lg. - stn. steel (6 req'd)	44-0592	
3	Pump casing, - polypropylene - glass filled - stainless steel - PVDF - carbon filled	44-0586 - 44-1222	- 44-0570 -
4 <sup>1</sup>	"O"- ring - Viton® (standard) - Teflon® - EPDM	44-0596 44-0569 22-0847	
5	Shaft - ceramic (std) - stainless steel	44-0587 -	44-0571
6	Front thrust washer - ceramic (std) - Hastelloy C	44-0588 44-0559	
7 <sup>4</sup>	Bushing - Ryton® (must be factory installed) - Chemic (MICA/TFE) - Carbon	44-0549 44-0568A 44-0589	
8 <sup>1,2</sup>	Impeller magnet assembly, w/Ryton bushing, standard (MPGR) w/carbon bushing (MPGC) w/Chemic bushing (MPGK)	44-0556 44-0590A 44-0597A	- - -
See Box "A"	Impeller magnet assembly, stainless steel w/ Ryton bushing, standard (MSGR) w/carbon bushing (MSGC) w/Chemic bushing (MSGK) Impeller magnet assembly, PVDF w/carbon bushing, standard (MKGC) w/Chemic bushing (MKGK)	- - - 44-1223 44-1223A	44-0574 44-0573 44-0575A - -

<sup>1</sup> Recommended Spare Parts. Include Model No. when ordering parts.

<sup>2</sup> For pumps built after 4/92 which have a molded-in Item 10. Check impeller for free fit /running over thrust washer boss. The inside diameter of the counter bore in the rear of the impeller should be .750 in (19mm).

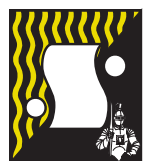
<sup>3</sup> Not required for parts manufactured after 4/92.

<sup>4</sup> Replacement Ryton and Chemic bushings must be field or factory installed in impeller and then reamed to .375".



- <sup>1</sup> Recommended Spare Parts. Include Model No. when ordering parts.
- <sup>2</sup> For pumps built after 4/92 which have a molded-in Item 10. Check impeller for free fit/running over thrust washer boss. The inside diameter of the counter bore in the rear of the impeller should be .750 in (19mm).
- <sup>3</sup> Not required for parts manufactured after 4/92.
- <sup>4</sup> Replacement Ryton and Chemic bushings must be field or factory installed in impeller and then reamed to .375".

ITEM	DESCRIPTION	MODEL	
		MPGR MKGC	MSGR
		PART NUMBERS	
9 <sup>1</sup>	Impeller magnet liner, w/ thrust washer - Ryton - glass filled - stainless steel - PVDF - carbon filled	44-0599 - 44-1221	- 44-0577 -
10 <sup>3</sup>	Rear thrust washer, porcelain	44-0567	-
11	Drive magnet assy.	44-0508	
12	Motor connecting bracket	44-0595	
13	Motor screws (4 req'd)	44-0594	
14	Motor & cord 3/4 HP TEFC 115/230/1/50-60 208-230-460/3/50-60 1 HP EXP 115/230/1/50-60 230-460/3/50-60	44-0583-1 44-0583C 44-0593 44-0593C	
15	Wet end assembly (Includes Items #1, 2, 3, 4, 5, 6, 8, 9)	MPGR MPGC MPGK MSGR MSGC MSGK MKGC MKGK	- - - 44-7453 44-7454 44-7455 - -
16	Pump only (Complete without motor) - MPGR - MKGC -MSGR  - For Chemic bushing add '-K' to Price Code No. - For carbon bushing add '-L' to Price Code No.	44-0582 44-6111 -	- - 44-0580



# SERFILCO®

SERFILCO, Ltd. (800) 323-5431  
2900 MacArthur Blvd. (847) 509-2900  
Northbrook, IL. 60062-2005 Fax: (847) 559-1141  
U.S.A. sales@serfilco.com  
www.serfilco.com