

System shown with
available 1528
carbon chamber



System shown with
available 3548
carbon chamber
and SV3-60 slurry tank



FOR THOSE WHO DEMAND THE FINEST IN PARTICLE RETENTION

***ELECTROPLATING / CHEMICAL / PCB
PETROCHEMICAL / WATER TREATMENT
PHARMACEUTICAL / PHOTOGRAPHIC***

- **Flow rates: 7,200 to 19,000 GPH @ 60 Hz**
- **Non-metallic solution contact**
Rubber lined steel chambers with
magnetic-coupled polypropylene pumps
or CPVC mechanical seal pumps
(See a chemical resistance chart)
- **Cartridge or horizontal disc**
- **Solids loading area:**
420, 630 or 840 sq. ft. using cartridges
60, 78 or 105 sq. ft. using discs

OPTIONAL —

Slurry tank with 3 additional flow control valves
for pump priming, precoating and . . .

Carbon purification chamber for organics removal

These filtration systems include design features gained through more than 40 years of experience in developing chemically resistant pumps, filter chambers and systems. High flow rates to quickly remove particles, together with large surface area for solids loading are combined to provide extended operating life of solutions and improve product quality. A wide choice of media is available to best serve your application. Optional carbon chamber and slurry tank make the system extremely versatile.

Sentry filtration systems are engineered to provide efficient removal of particles or organic impurities from a wide range of chemical and plating solutions to 160°F. Chambers and pumps feature non-metallic solution contact. All external steel surfaces are painted two-part epoxy grey enamel. All internals are CPVC.

**The following pages contain a representative
sampling of available standard systems.**

SENTRY FILTRATION / PURIFICATION SYSTEMS with seal-less magnetic drive pumps

CHOOSE YOUR SYSTEM

FIRST, SELECT

Seal-less Magnetic-Coupled Pump

Systems may be selected with magnetic-coupled pumps which provide protection from vapor and liquid leaks. Pumps are available in polypropylene to meet a variety of chemical and temperature applications.

OR SELECT

Single or Double Seal Pump

Systems with mechanical seals should be selected whenever excessive abrasives or ferrous metal particles are present. Standard single and double seal pumps are CPVC and feature silicon carbide (SiC) seal faces with EPDM elastomers.



Sentry disc chamber with cover removed

THEN SELECT

Filter Chamber for solids holding capacity*

Chambers are constructed of rubber lined steel for acid solutions. They accept Maxi-Depth® wound, pleated, cleanable sleeve, or carbon cartridges. **

Chambers allow for simultaneous filtration and purification by using carbon cartridges. A separate purification chamber with flow control valve is available. See Options on page 4.

* Select a system which will provide 3.5 - 7.0 square ft. of solids holding area per 50 gallons of solution. Flow rate should be 2-10 tank turnovers per hour, depending on clarity desired. Coarse media and high flows are desirable for high dirt load applications. Increasing the number of cartridges reduces solution flow per cartridge, improves efficiency and reduces cartridge consumption. System comes complete with flow control valve between pump and filter chamber. When unit is de-energized, flow control valve may be closed to maintain prime during media change.

** Chambers provided with the following Series 'CR' systems are for cartridges.

To specify system for use with discs –

Change CR1200 in System No. to DR60

Change CR1800 in System No. to DR78

or Change CR2400 in System No. to DR105

RUBBER LINED CHAMBER with MAGNETIC DRIVE POLYPROPYLENE PUMP

Pump includes fluoride-resistant ceramic spindle with EPDM elastomers.

SYSTEM NUMBER	FLOW RATE GPH @ 60Hz	MAX. PUMP PSI	NO. OF CARTS. 1	SOLIDS AREA ² Sq. ft.	PUMP, HP, CHAMBER	SUCT./ DISCH. CONN.	DIMS. L x W x H Inches	SHIP. WT. Lbs.
CR1200F650	7200	30	120	420	F, 5, CR	2"	48 x 48 x 64	1300
CR1800F650	7200	30	180	630			48 x 48 x 72	1400
CR2400F650	7200	30	240	840			48 x 48 x 87	1600

SYSTEM NUMBER	FLOW RATE GPH @ 60Hz	MAX. PUMP PSI	NO. OF CARTS. 1	SOLIDS AREA ² Sq. ft.	PUMP, HP, CHAMBER	SUCT./ DISCH. CONN.	DIMS. L x W x H Inches	SHIP. WT. Lbs.
CR1200F850	9600	45	120	420	F, 5, CR	2"	48 x 48 x 64	1325
CR1800F850	9600	45	180	630			48 x 48 x 72	1425
CR2400F850	9600	45	240	840			48 x 48 x 87	1625

SYSTEM NUMBER	FLOW RATE GPH @ 60Hz	MAX. PUMP PSI	NO. OF CARTS. 1	SOLIDS AREA ² Sq. ft.	PUMP, HP, CHAMBER	SUCT./ DISCH. CONN.	DIMS. L x W x H Inches	SHIP. WT. Lbs.
CR1200F910	12000	55	120	420	F, 10.0, CR	3"	48 x 48 x 64	1365
CR1800F910	12000	55	180	630			48 x 48 x 72	1465
CR2400F910	12000	55	240	840			48 x 48 x 87	1665



SENTRY FILTRATION / PURIFICATION SYSTEMS with single or double mechanical seal pumps *

RUBBER LINED CHAMBER with DIRECT DRIVE CPVC PUMP
Pump includes silicon carbide mechanical seal with EPDM elastomers.

SYSTEM NUMBER	FLOW RATE GPH @ 60Hz	MAX. PUMP PSI	NO. OF CARTS. ¹	SOLIDS AREA ² Sq. ft.	PUMP, HP, CHAMBER	SUCT./ DISCH. CONN.	DIMS. L x W x H Inches	SHIP. WT. Lbs.
CR1200HE330	7500	36	120	420	HE, 3, CR	2"	48 x 48 x 64	1300
CR1800HE330	7500	36	180	630			48 x 48 x 72	1400
CR2400HE330	7500	36	240	840			48 x 48 x 87	1600

SYSTEM NUMBER	FLOW RATE GPH @ 60Hz	MAX. PUMP PSI	NO. OF CARTS. ¹	SOLIDS AREA ² Sq. ft.	PUMP, HP, CHAMBER	SUCT./ DISCH. CONN.	DIMS. L x W x H Inches	SHIP. WT. Lbs.
CR1200HE450	8500	50	120	420	HE, 5, CR	2"	48 x 48 x 64	1325
CR1800HE450	8500	50	180	630			48 x 48 x 72	1425
CR2400HE450	8500	50	240	840			48 x 48 x 87	1625

SYSTEM NUMBER	FLOW RATE GPH @ 60Hz	MAX. PUMP PSI	NO. OF CARTS. ¹	SOLIDS AREA ² Sq. ft.	PUMP, HP, CHAMBER	SUCT./ DISCH. CONN.	DIMS. L x W x H Inches	SHIP. WT. Lbs.
CR1200HE575	9600	60	120	420	HE, 7.5, CR	2"	48 x 48 x 64	1365
CR1800HE575	9600	60	180	630			48 x 48 x 72	1465
CR2400HE575	9600	60	240	840			48 x 48 x 87	1665

SYSTEM NUMBER	FLOW RATE GPH @ 60Hz	MAX. PUMP PSI	NO. OF CARTS. ¹	SOLIDS AREA ² Sq. ft.	PUMP, HP, CHAMBER	SUCT./ DISCH. CONN.	DIMS. L x W x H Inches	SHIP. WT. Lbs.
CR1200H875	15000	27	120	420	H, 7.5, CR	3"	48 x 48 x 72	1475
CR1800H875	15000	27	180	630			48 x 48 x 87	1675
CR2400H510	19000	50	240	840			H, 10, CR	48 x 48 x 87



NOTE:

* To order pump with double mechanical seal - Change **HE** to **HED** or **H** to **HD** in System No.

¹ No. of 10" cartridges. Order separately. See Bulletin M-109.

² With Maxi-Depth cartridges. See Bulletin M-109.

SENTRY systems include:

- Stationary steel mounting base coated with corrosion resistant 2-part epoxy paint.
- Motors are 230-460V/3/50-60, TEFC, 1725 or 3450 RPM. Systems wired for 230V/3/60 unless otherwise specified.
- Piping is solvent sealed CPVC, with EPDM "O"-rings at threaded connections.
- O-60 PSI pressure gauge with gauge guard.
- Two flow control valves — one between pump and filter, second at filter discharge.
- Ball valves are solvent sealed CPVC at filter inlet and outlet.
- Capped tee on filter inlet and outlet for drains or field installation of bulk carbon.
- CPVC vent valve assembly.
- 1" drain valve on filter.

Available for all models:

Granular carbon purification chamber installed on filter discharge with flow control valve is an available option. This allows filtered solution to pass through the activated carbon on a convenient "ON-OFF" basis before returning to the process tank. In addition to pump priming and chemical mixing, optional slurry tank with three additional valves allows precoating of media with filter aid and/or carbon. See Optional on the next page.

SENTRY FILTRATION / PURIFICATION SYSTEMS (cont'd.)

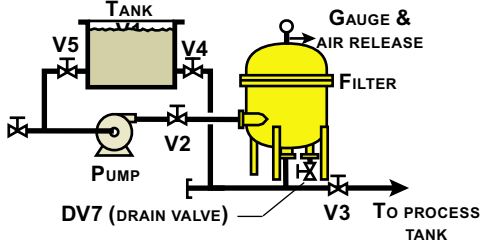
OPTIONS

DESCRIPTION	PRICE CODE NO.
MOTOR STARTERS - NEMA 4X Watertight push button	
230 - 460V/3/50-60 (3 - 7.5 H.P.) 230 - 460V/3/50-60 (10 - 15 H.P.) NOTE: Specify operating voltage O-MS3P-S is required for any size system ordered with a DRI-STOP® Pump Protector.	O-MS3P O-MS3P-S

DRI-STOP® PUMP PROTECTOR	
DRI-STOP 2R for use with double mechanical seal pumps.	O-2DS2R
DRI-STOP 3 for use with magnetic drive or single mechanical seal pumps.	O-DS3C

DAVIT COVER LIFT	
For Model: DR78 / CR180 DR105 / CR240	78-1603 78-1604

SLURRY TANK and VALVES	PRICE CODE NO.
For chemical mixing, pump priming or precoating. Includes polyethylene tank, three additional CPVC flow control valves, steel frame. Completely piped and assembled with filter and pump on a standard base. 30 gal. slurry w/3 add'l valves 60 gal. slurry w/3 add'l valves	O-SV3-30 O-SV3-60



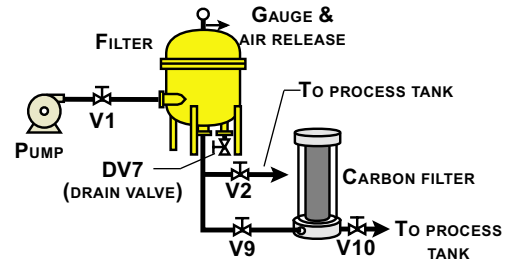
DESCRIPTION	PRICE CODE NO.
CARBON PURIFICATION CHAMBER Order carbon media from Bulletin M-305.	

Includes adapter kit, flow control valve, drain valve and 10 ft. of nylon reinforced vinyl hose, PVC chamber and internal canister(s) for use with granular carbon.

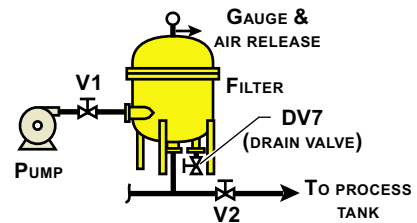
Single 5" x 28" canister, 7.5 lbs. capacity O-1528
Triple 5" x 28" canister, 22.5 lbs. capacity O-3528
Triple 5" x 48" canister, 42 lbs capacity O-3548

Chamber for single 5" x 28" Maxi-Carb cartridge (3.0 lbs. carbon)

Polypropylene O-PP1528M
CPVC O-1528M



Standard Sentry with two flow control valves



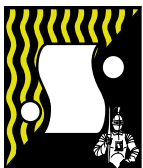
DISC MEDIA

SENTRY FILTRATION SYSTEMS			
CARTRIDGE		DISC	
MODEL	SOLIDS AREA Square feet	MODEL	SOLIDS AREA Square feet
CR1200	420	DR60	60
CR1800	630	DR78	78
CR2400	840	DR105	105

FILTER DISCS, CELLULOSE Packaged in carton of 250		
DISC MODEL	MICRON RATING	PRICE CODE NO.
CE5x24	5	78-1420
CE10x24	10	78-1421
CE20x24	20	78-1422
CE40x24	40	78-1423

F.O.B. Northbrook, Illinois

Specifications subject to change without notice.



SERFILCO, LTD.

2900 MacArthur Blvd. 847-509-2900
Northbrook, IL 60062-2005 U.S.A. 800-323-5431
e-mail: sales@serfilco.com FAX: 847-559-1995
www.serfilco.com

DISTRIBUTED BY